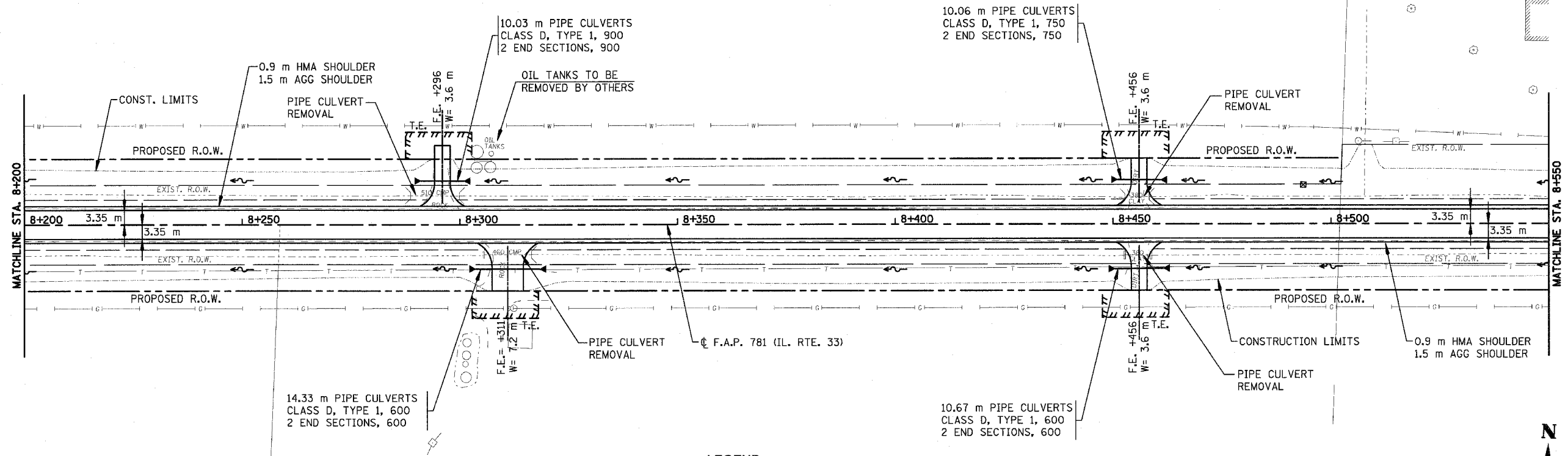
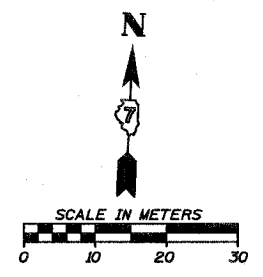


F.A.P. RTE.	SECTION	COUNTY	TOTAL SHEETS	SHEET NO.
781	1YRS, 2ZRS-1	CRAWFORD	378	85
STA. 8+200		TO STA. 8+550		
FED. ROAD DIST. NO.	ILLINOIS	FED. AID PROJECT		



LEGEND

- PAVEMENT REMOVAL (INCLUDES ALL MATERIAL ENCOUNTERED)
- DRIVEWAY PAVEMENT REMOVAL (INCLUDES ALL MATERIAL ENCOUNTERED)
- SIDEWALK REMOVAL (INCLUDES STEPS)
- TREE REMOVAL (HECTARES)
- RIPRAP (TYPE AND LIMITS SHOWN)
- EROSION CONTROL BLANKET (TYPE AND LIMITS SHOWN)
- AGGREGATE DITCH
- TREE REMOVAL



152	TBM NO. 18 STA. 8+305.483, 6.464 m RT ELEV. 149.041 m CHISELED SQUARE, NORTHWEST CORNER OF WEST HEADWALL ENTRANCE TO OIL STORAGE TANKS.																				152									
151	NOMINAL/VARIABLE MILLING (SEE SCHEDULE) TYPICAL HMA RESURFACING																				151									
150	EXISTING ϕ PROFILE																				150									
149																					149									
148	SPECIAL DITCH LEFT AND RIGHT AT +0.34%																				148									
147																					147									
146																					146									
145																					145									
144																					144									
143																					143									
	149.001 149.043 (PROPOSED)	149.021 149.063	149.038 149.080	149.052 149.094	149.069 149.111	149.104 149.146	149.140 149.182	149.174 149.216	149.209 149.251	149.249 149.291	149.313 149.355	149.378 149.420	149.427 149.469	149.473 149.515	149.516 149.558	149.558 149.600	149.599 149.641	149.637 149.679	149.674 149.716	149.714 149.756	149.755 149.797	149.786 149.828	149.790 149.832	149.793 149.835	149.826 149.868	149.866 149.908	149.900 149.942	149.925 149.967	149.951 149.993	
	8+200	8+225	8+250	8+275	8+300	8+325	8+350	8+375	8+400	8+425	8+450	8+475	8+500	8+525	8+550															

PLOT DATE = 4/18/2008
FILE NAME = H:\428\70005_50pp-13.dgn

Sheet: 19
Angle: 2.7862
Chain: P_IL33

HMC JOB NO. 448