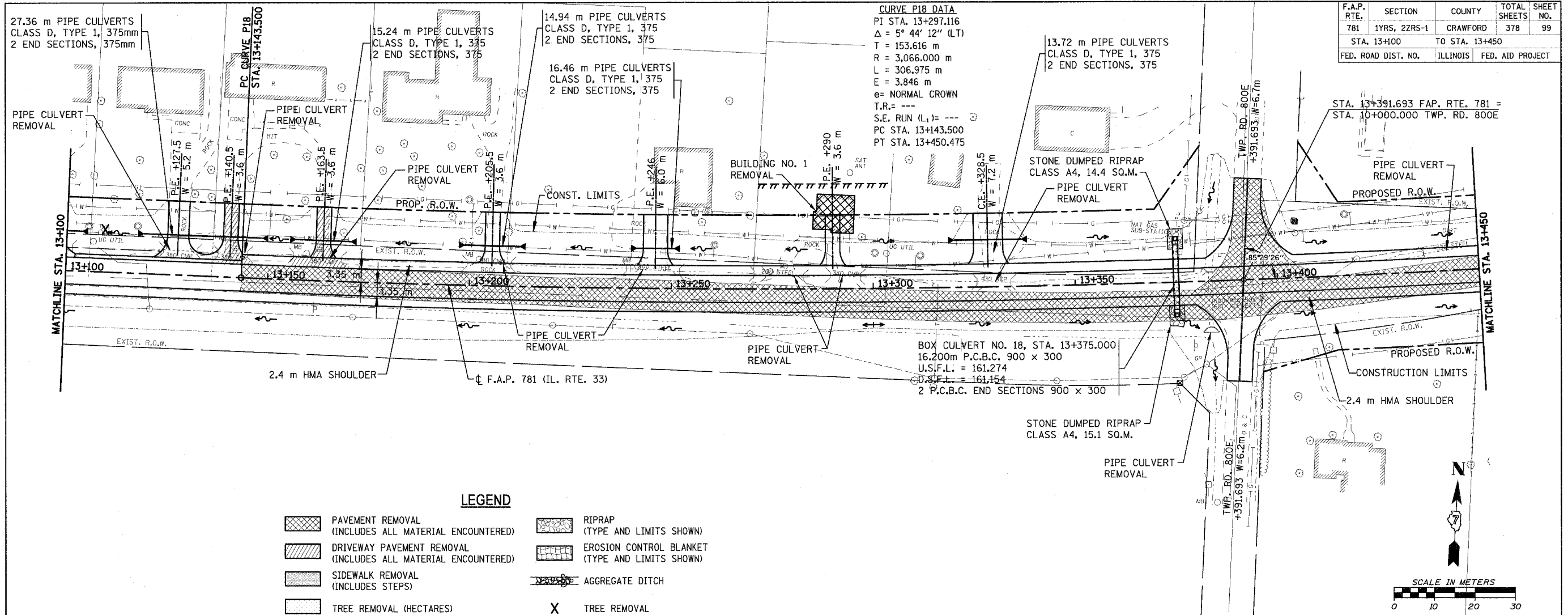


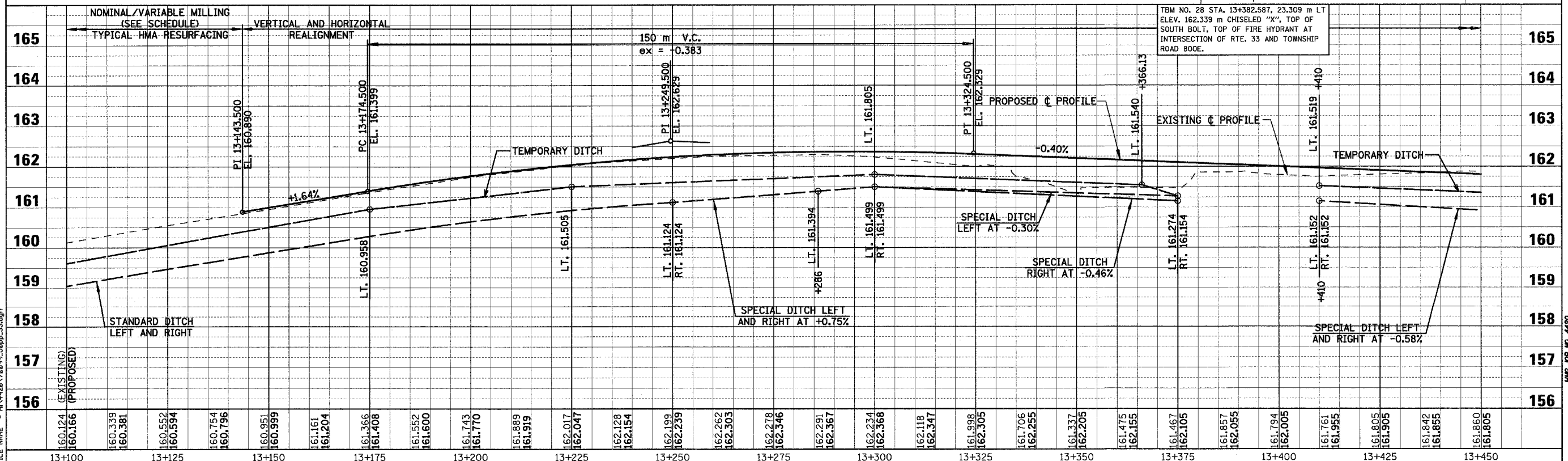
F.A.P. RTE.	SECTION	COUNTY	TOTAL SHEETS	SHEET NO.
781	1YRS, 2ZRS-1	CRAWFORD	378	99
STA. 13+100		TO STA. 13+450		
FED. ROAD DIST. NO.		ILLINOIS		FED. AID PROJECT



CURVE P18 DATA
 PI STA. 13+297.116
 $\Delta = 5^\circ 44' 12''$ (LT)
 $T = 153.616$ m
 $R = 3,066.000$ m
 $L = 306.975$ m
 $E = 3.846$ m
 e= NORMAL CROWN
 T.R.= ---
 S.E. RUN (L₁)= ---
 PC STA. 13+143.500
 PT STA. 13+450.475

LEGEND

	PAVEMENT REMOVAL (INCLUDES ALL MATERIAL ENCOUNTERED)		RIPRAP (TYPE AND LIMITS SHOWN)
	DRIVEWAY PAVEMENT REMOVAL (INCLUDES ALL MATERIAL ENCOUNTERED)		EROSION CONTROL BLANKET (TYPE AND LIMITS SHOWN)
	SIDEWALK REMOVAL (INCLUDES STEPS)		AGGREGATE DITCH
	TREE REMOVAL (HECTARES)		TREE REMOVAL



PLOT DATE = 4/18/2008
 FILE NAME = H:\4428\7009\50pp-33.dgn

Sheet: 50pp_33.dgn
 Angle: 3.2235
 Chain: P_IL33
 4/18/2008

HMG JOB NO. 449