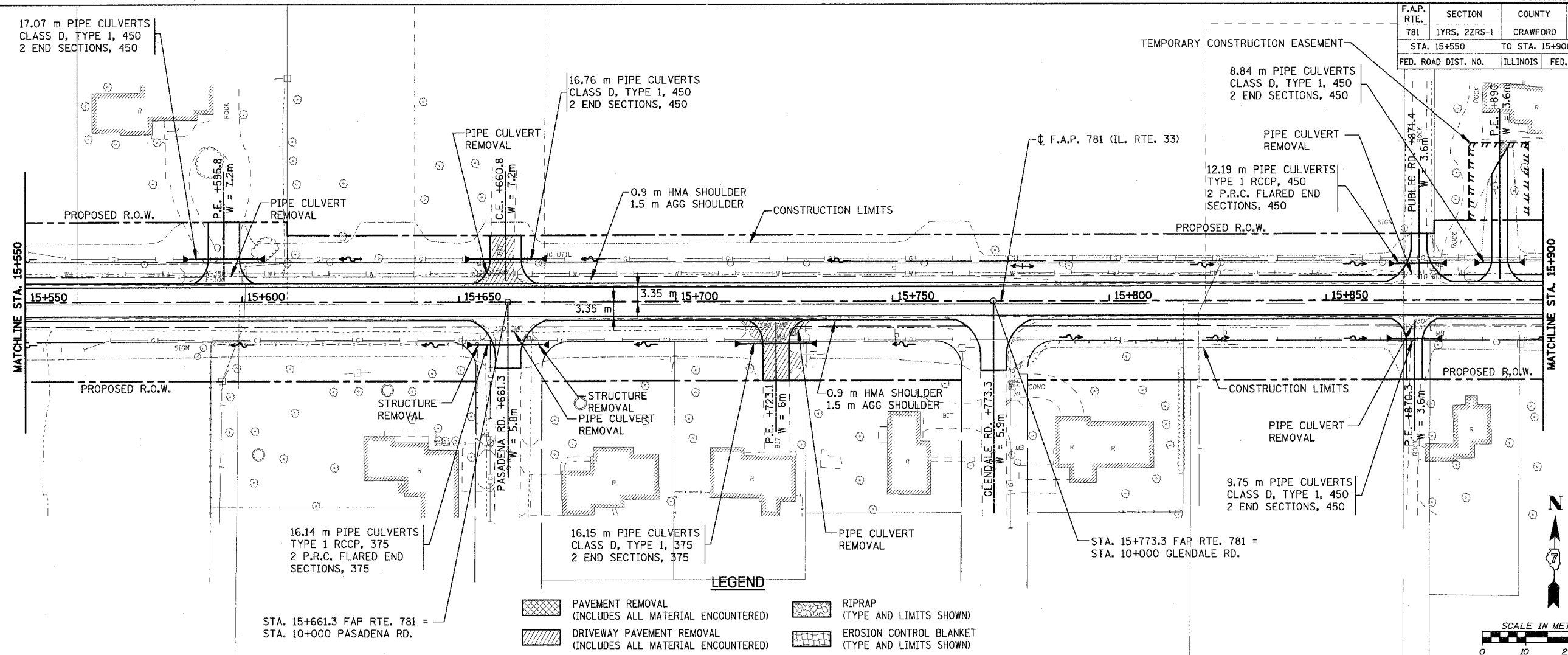


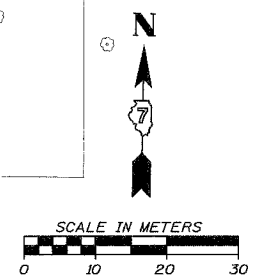
F.A.P. RTE.	SECTION	COUNTY	TOTAL SHEETS	SHEET NO.
781	1YRS, 2ZRS-1	CRAWFORD	378	106
STA. 15+550		TO STA. 15+900		
FED. ROAD DIST. NO.		ILLINOIS		FED. AID PROJECT



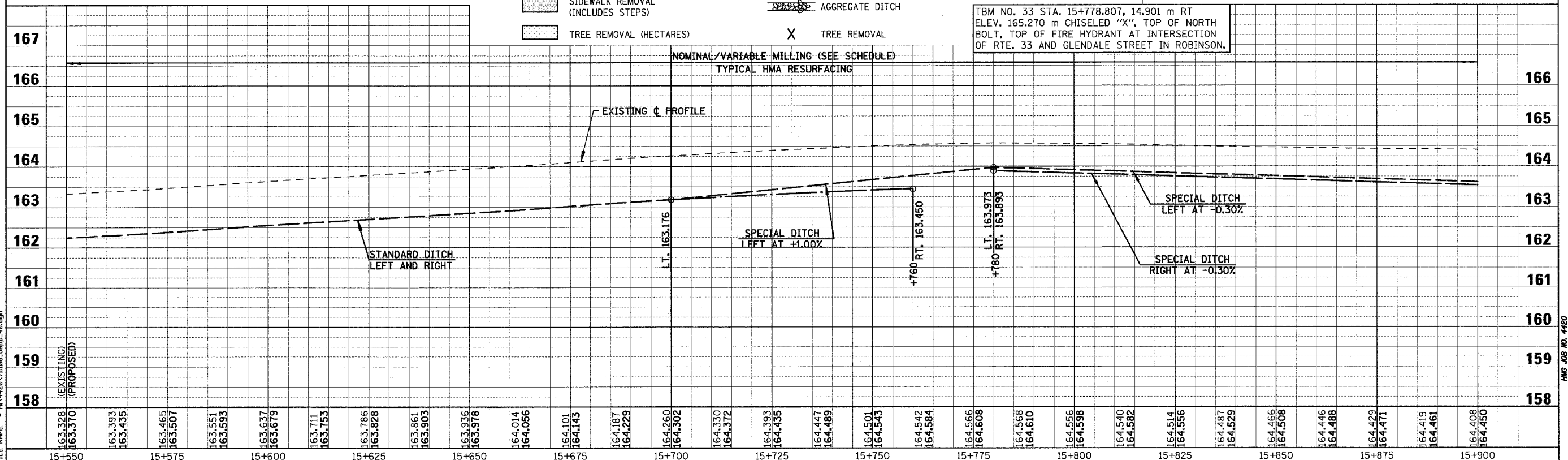
STA. 15+661.3 FAP RTE. 781 = STA. 10+000 PASADENA RD.

**LEGEND**

- PAVEMENT REMOVAL (INCLUDES ALL MATERIAL ENCOUNTERED)
- DRIVEWAY PAVEMENT REMOVAL (INCLUDES ALL MATERIAL ENCOUNTERED)
- SIDEWALK REMOVAL (INCLUDES STEPS)
- TREE REMOVAL (HECTARES)
- RIPRAP (TYPE AND LIMITS SHOWN)
- EROSION CONTROL BLANKET (TYPE AND LIMITS SHOWN)
- AGGREGATE DITCH
- TREE REMOVAL



TBM NO. 33 STA. 15+778.807, 14.901 m RT ELEV. 165.270 m CHISELED "X", TOP OF NORTH BOLT, TOP OF FIRE HYDRANT AT INTERSECTION OF RTE. 33 AND GLENDALE STREET IN ROBINSON.



Sheet: 40  
 Angle: 1.2038  
 Chain: P\_IL33

PLOT DATE = 4/19/2008  
 FILE NAME = HV4428/7606L59ppp\_48.dgn

HMG JOB NO. 4480