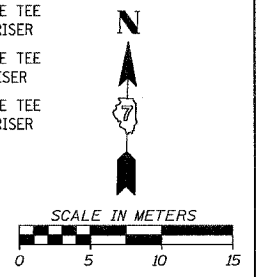
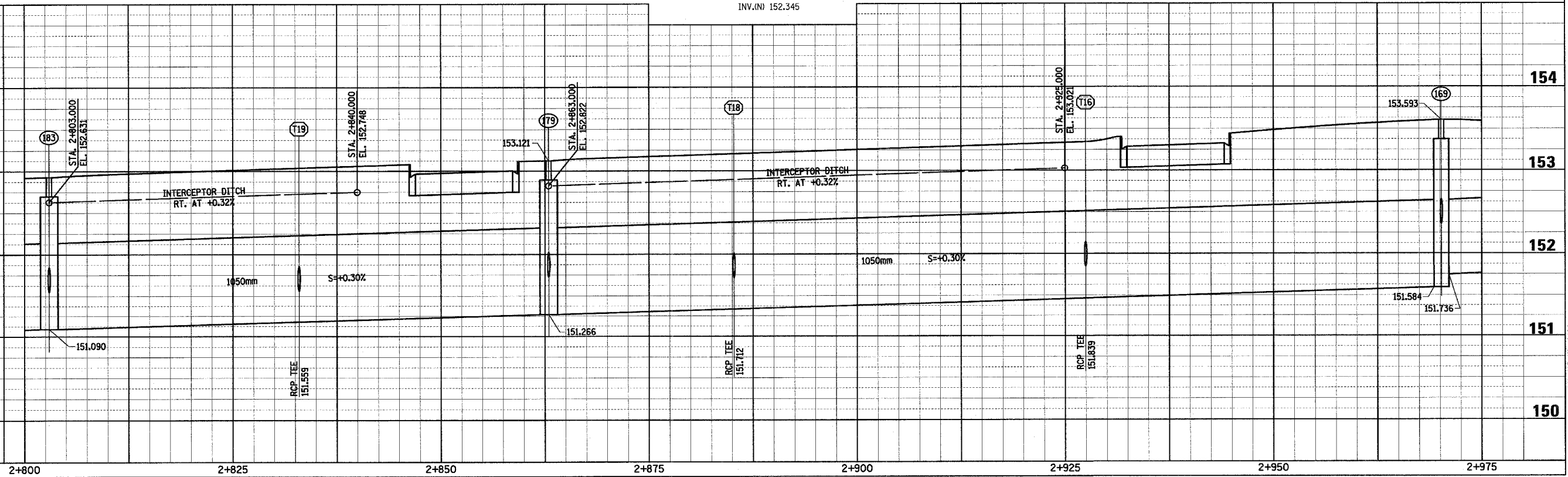
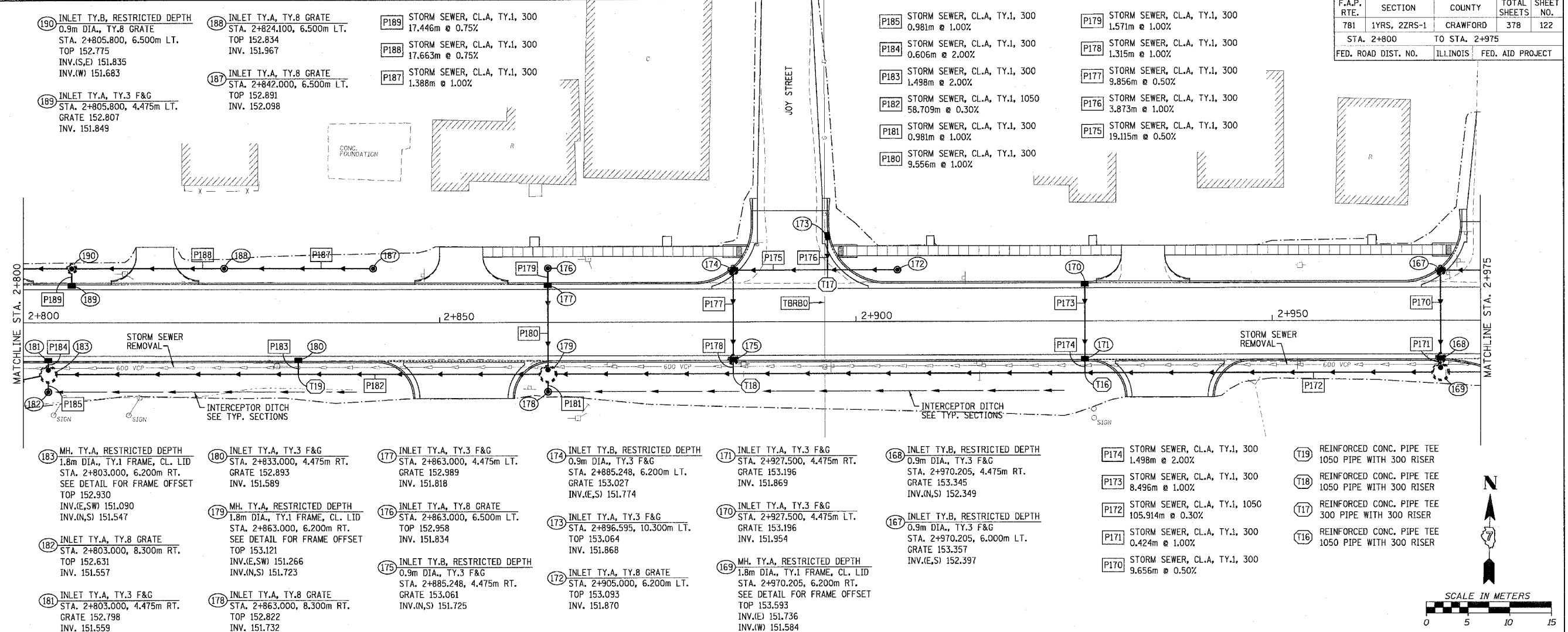


F.A.P. RTE.	SECTION	COUNTY	TOTAL SHEETS	SHEET NO.
781	1YRS, 2ZRS-1	CRAWFORD	378	122
STA. 2+800		TO STA. 2+975		
FED. ROAD DIST. NO.	ILLINOIS	FED. AID PROJECT		



- (190) INLET TY.B, RESTRICTED DEPTH 0.9m DIA., TY.8 GRATE STA. 2+805.800, 6.500m LT. TOP 152.775 INV.(S,E) 151.835 INV.(W) 151.683
- (189) INLET TY.A, TY.3 F&G STA. 2+805.800, 4.475m LT. GRATE 152.807 INV. 151.849

- (188) INLET TY.A, TY.8 GRATE STA. 2+824.100, 6.500m LT. TOP 152.834 INV. 151.967
- (187) INLET TY.A, TY.8 GRATE STA. 2+842.000, 6.500m LT. TOP 152.891 INV. 152.098

- (P189) STORM SEWER, CL.A, TY.1, 300 17.446m @ 0.75%
- (P188) STORM SEWER, CL.A, TY.1, 300 17.663m @ 0.75%
- (P187) STORM SEWER, CL.A, TY.1, 300 1.388m @ 1.00%

- (P185) STORM SEWER, CL.A, TY.1, 300 0.981m @ 1.00%
- (P184) STORM SEWER, CL.A, TY.1, 300 0.606m @ 2.00%
- (P183) STORM SEWER, CL.A, TY.1, 300 1.498m @ 2.00%
- (P182) STORM SEWER, CL.A, TY.1, 1050 58.709m @ 0.30%
- (P181) STORM SEWER, CL.A, TY.1, 300 0.981m @ 1.00%
- (P180) STORM SEWER, CL.A, TY.1, 300 9.556m @ 1.00%

- (P179) STORM SEWER, CL.A, TY.1, 300 1.571m @ 1.00%
- (P178) STORM SEWER, CL.A, TY.1, 300 1.315m @ 1.00%
- (P177) STORM SEWER, CL.A, TY.1, 300 9.856m @ 0.50%
- (P176) STORM SEWER, CL.A, TY.1, 300 3.873m @ 1.00%
- (P175) STORM SEWER, CL.A, TY.1, 300 19.115m @ 0.50%

- (I183) MH. TY.A, RESTRICTED DEPTH 1.8m DIA., TY.1 FRAME, CL. LID STA. 2+803.000, 6.200m RT. SEE DETAIL FOR FRAME OFFSET TOP 152.930 INV.(E,S,W) 151.090 INV.(N,S) 151.547
- (I182) INLET TY.A, TY.8 GRATE STA. 2+803.000, 8.300m RT. TOP 152.631 INV. 151.557
- (I181) INLET TY.A, TY.3 F&G STA. 2+803.000, 4.475m RT. GRATE 152.798 INV. 151.559

- (I180) INLET TY.A, TY.3 F&G STA. 2+833.000, 4.475m RT. GRATE 152.893 INV. 151.589
- (I179) MH. TY.A, RESTRICTED DEPTH 1.8m DIA., TY.1 FRAME, CL. LID STA. 2+863.000, 6.200m RT. SEE DETAIL FOR FRAME OFFSET TOP 153.121 INV.(E,S,W) 151.266 INV.(N,S) 151.723
- (I178) INLET TY.A, TY.8 GRATE STA. 2+863.000, 8.300m RT. TOP 152.822 INV. 151.732

- (I177) INLET TY.A, TY.3 F&G STA. 2+863.000, 4.475m LT. GRATE 152.989 INV. 151.818
- (I176) INLET TY.A, TY.8 GRATE STA. 2+863.000, 6.500m LT. TOP 152.958 INV. 151.834
- (I175) INLET TY.B, RESTRICTED DEPTH 0.9m DIA., TY.3 F&G STA. 2+885.248, 4.475m RT. GRATE 153.061 INV.(N,S) 151.725

- (I174) INLET TY.B, RESTRICTED DEPTH 0.9m DIA., TY.3 F&G STA. 2+885.248, 6.200m LT. GRATE 153.027 INV.(E,S) 151.774
- (I173) INLET TY.A, TY.3 F&G STA. 2+896.595, 10.300m LT. TOP 153.064 INV. 151.868
- (I172) INLET TY.A, TY.8 GRATE STA. 2+905.000, 6.200m LT. TOP 153.093 INV. 151.870

- (I171) INLET TY.A, TY.3 F&G STA. 2+927.500, 4.475m RT. GRATE 153.196 INV. 151.869
- (I170) INLET TY.A, TY.3 F&G STA. 2+927.500, 4.475m LT. GRATE 153.196 INV. 151.954
- (I169) MH. TY.A, RESTRICTED DEPTH 1.8m DIA., TY.1 FRAME, CL. LID STA. 2+970.205, 6.200m RT. SEE DETAIL FOR FRAME OFFSET TOP 153.593 INV.(E) 151.736 INV.(W) 151.584 INV.(N) 152.345

- (I168) INLET TY.B, RESTRICTED DEPTH 0.9m DIA., TY.3 F&G STA. 2+970.205, 4.475m RT. GRATE 153.345 INV.(N,S) 152.349
- (I167) INLET TY.B, RESTRICTED DEPTH 0.9m DIA., TY.3 F&G STA. 2+970.205, 6.000m LT. GRATE 153.357 INV.(E,S) 152.397

- (P174) STORM SEWER, CL.A, TY.1, 300 1.498m @ 2.00%
- (P173) STORM SEWER, CL.A, TY.1, 300 8.496m @ 1.00%
- (P172) STORM SEWER, CL.A, TY.1, 1050 105.914m @ 0.30%
- (P171) STORM SEWER, CL.A, TY.1, 300 0.424m @ 1.00%
- (P170) STORM SEWER, CL.A, TY.1, 300 9.656m @ 0.50%

- (T19) REINFORCED CONC. PIPE TEE 1050 PIPE WITH 300 RISER
- (T18) REINFORCED CONC. PIPE TEE 1050 PIPE WITH 300 RISER
- (T17) REINFORCED CONC. PIPE TEE 300 PIPE WITH 300 RISER
- (T16) REINFORCED CONC. PIPE TEE 1050 PIPE WITH 300 RISER

Sheet: 2  
 Angle: 1.0118  
 Chain: P\_IL33

PLOT DATE = 3/20/2006  
 FILE NAME = H:\4428\78122\_ss\_02.dgn

HMG JOB NO. 4420