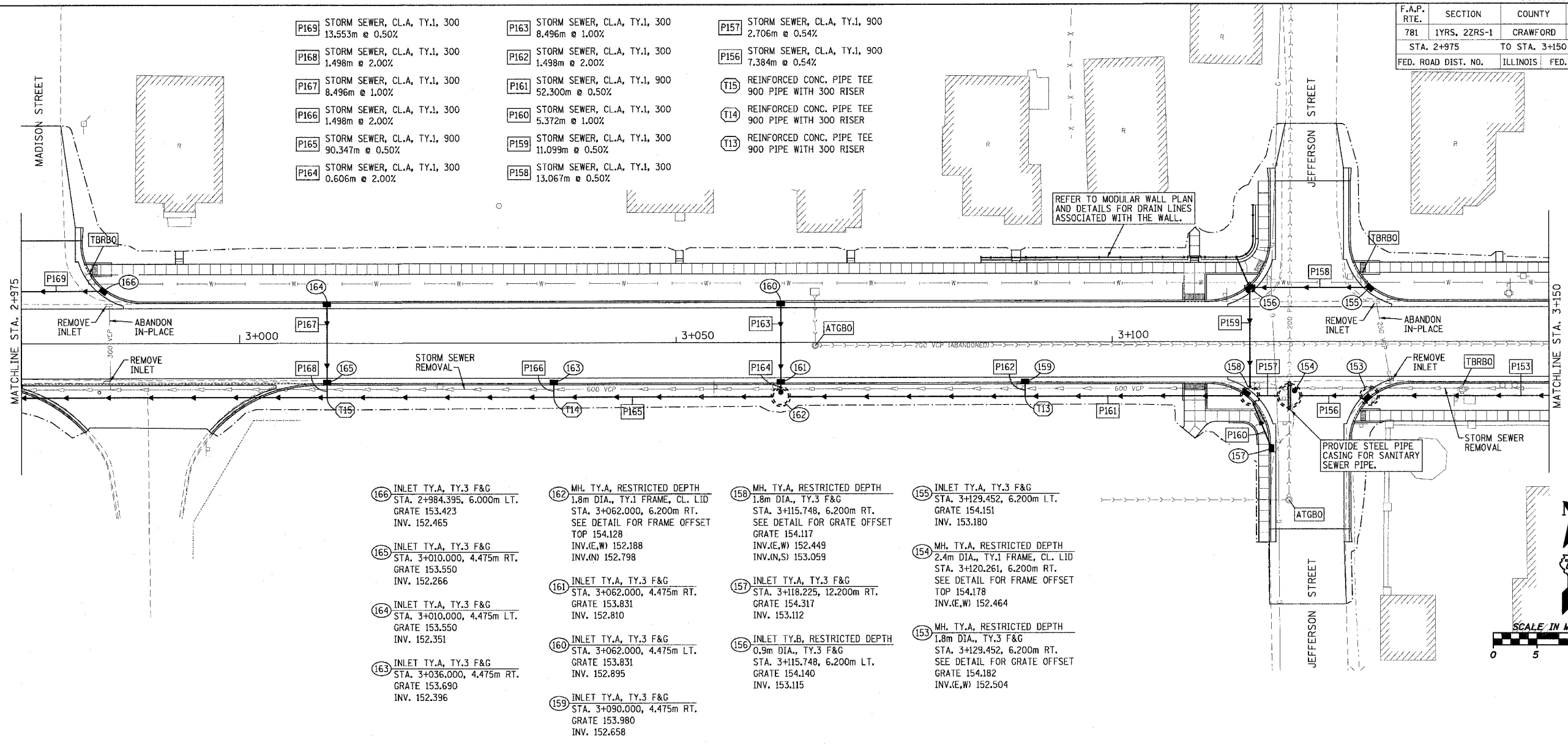
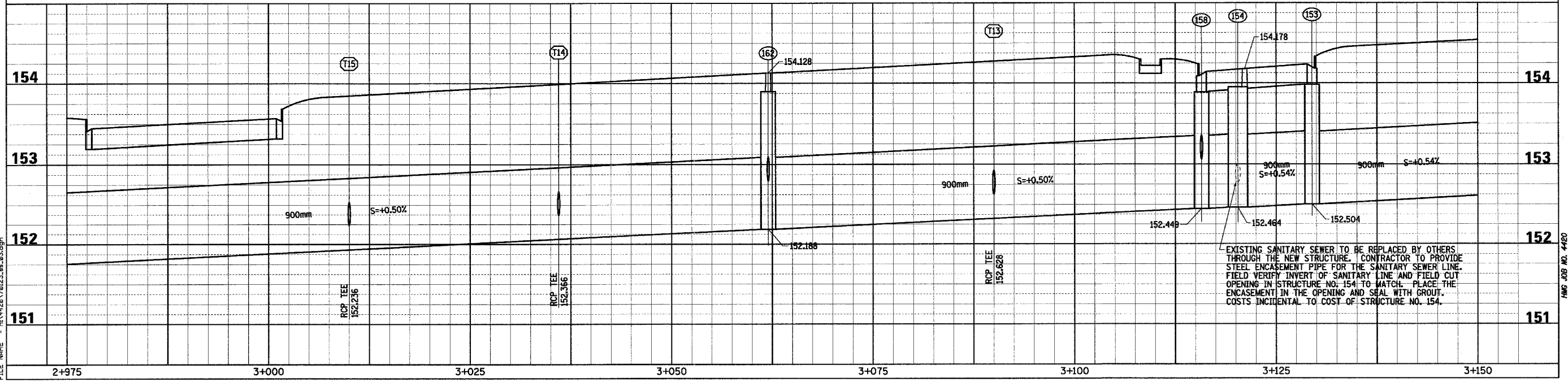
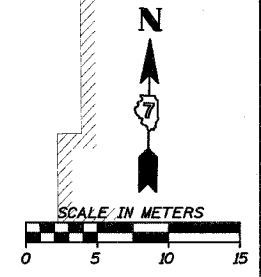


F.A.P. RTE.	SECTION	COUNTY	TOTAL SHEETS	SHEET NO.
781	1YRS, 2ZRS-1	CRAWFORD	378	123
STA. 2+975		TO STA. 3+150		
FED. ROAD DIST. NO.		ILLINOIS	FED. AID PROJECT	

- P169 STORM SEWER, CL.A, TY.1, 300
13.553m @ 0.50%
- P168 STORM SEWER, CL.A, TY.1, 300
1.498m @ 2.00%
- P167 STORM SEWER, CL.A, TY.1, 300
8.496m @ 1.00%
- P166 STORM SEWER, CL.A, TY.1, 300
1.498m @ 2.00%
- P165 STORM SEWER, CL.A, TY.1, 900
90.347m @ 0.50%
- P164 STORM SEWER, CL.A, TY.1, 300
0.606m @ 2.00%
- P163 STORM SEWER, CL.A, TY.1, 300
8.496m @ 1.00%
- P162 STORM SEWER, CL.A, TY.1, 300
1.498m @ 2.00%
- P161 STORM SEWER, CL.A, TY.1, 900
52.300m @ 0.50%
- P160 STORM SEWER, CL.A, TY.1, 300
5.372m @ 1.00%
- P159 STORM SEWER, CL.A, TY.1, 300
11.099m @ 0.50%
- P158 STORM SEWER, CL.A, TY.1, 300
13.067m @ 0.50%
- P157 STORM SEWER, CL.A, TY.1, 900
2.706m @ 0.54%
- P156 STORM SEWER, CL.A, TY.1, 900
7.384m @ 0.54%
- T15 REINFORCED CONC. PIPE TEE
900 PIPE WITH 300 RISER
- T14 REINFORCED CONC. PIPE TEE
900 PIPE WITH 300 RISER
- T13 REINFORCED CONC. PIPE TEE
900 PIPE WITH 300 RISER



- 166 INLET TY.A, TY.3 F&G
STA. 2+984.395, 6.000m LT.
GRATE 153.423
INV. 152.465
- 165 INLET TY.A, TY.3 F&G
STA. 3+010.000, 4.475m RT.
GRATE 153.550
INV. 152.266
- 164 INLET TY.A, TY.3 F&G
STA. 3+010.000, 4.475m LT.
GRATE 153.550
INV. 152.351
- 163 INLET TY.A, TY.3 F&G
STA. 3+036.000, 4.475m RT.
GRATE 153.690
INV. 152.396
- 162 MH, TY.A, RESTRICTED DEPTH
1.8m DIA., TY.1 FRAME, CL. LID
STA. 3+062.000, 6.200m RT.
SEE DETAIL FOR FRAME OFFSET
TOP 154.128
INV.(E,W) 152.188
INV.(N) 152.798
- 161 INLET TY.A, TY.3 F&G
STA. 3+062.000, 4.475m RT.
GRATE 153.831
INV. 152.810
- 160 INLET TY.A, TY.3 F&G
STA. 3+062.000, 4.475m LT.
GRATE 153.831
INV. 152.895
- 159 INLET TY.A, TY.3 F&G
STA. 3+090.000, 4.475m RT.
GRATE 153.980
INV. 152.658
- 158 MH, TY.A, RESTRICTED DEPTH
1.8m DIA., TY.3 F&G
STA. 3+115.748, 6.200m RT.
SEE DETAIL FOR GRATE OFFSET
GRATE 154.117
INV.(E,W) 152.449
INV.(N,S) 153.059
- 157 INLET TY.A, TY.3 F&G
STA. 3+118.225, 12.200m RT.
GRATE 154.317
INV. 153.112
- 156 INLET TY.B, RESTRICTED DEPTH
0.9m DIA., TY.3 F&G
STA. 3+115.748, 6.200m LT.
GRATE 154.140
INV. 153.115
- 155 INLET TY.A, TY.3 F&G
STA. 3+129.452, 6.200m LT.
GRATE 154.151
INV. 153.180
- 154 MH, TY.A, RESTRICTED DEPTH
2.4m DIA., TY.1 FRAME, CL. LID
STA. 3+120.261, 6.200m RT.
SEE DETAIL FOR FRAME OFFSET
TOP 154.178
INV.(E,W) 152.464
- 153 MH, TY.A, RESTRICTED DEPTH
1.8m DIA., TY.3 F&G
STA. 3+129.452, 6.200m RT.
SEE DETAIL FOR GRATE OFFSET
GRATE 154.182
INV.(E,W) 152.504



Sheet: 3
Angle: 0.9788
Chain: P_IL33

PLOT DATE = 3/28/2008
FILE NAME = H:\428\70123.sp_03.dgn