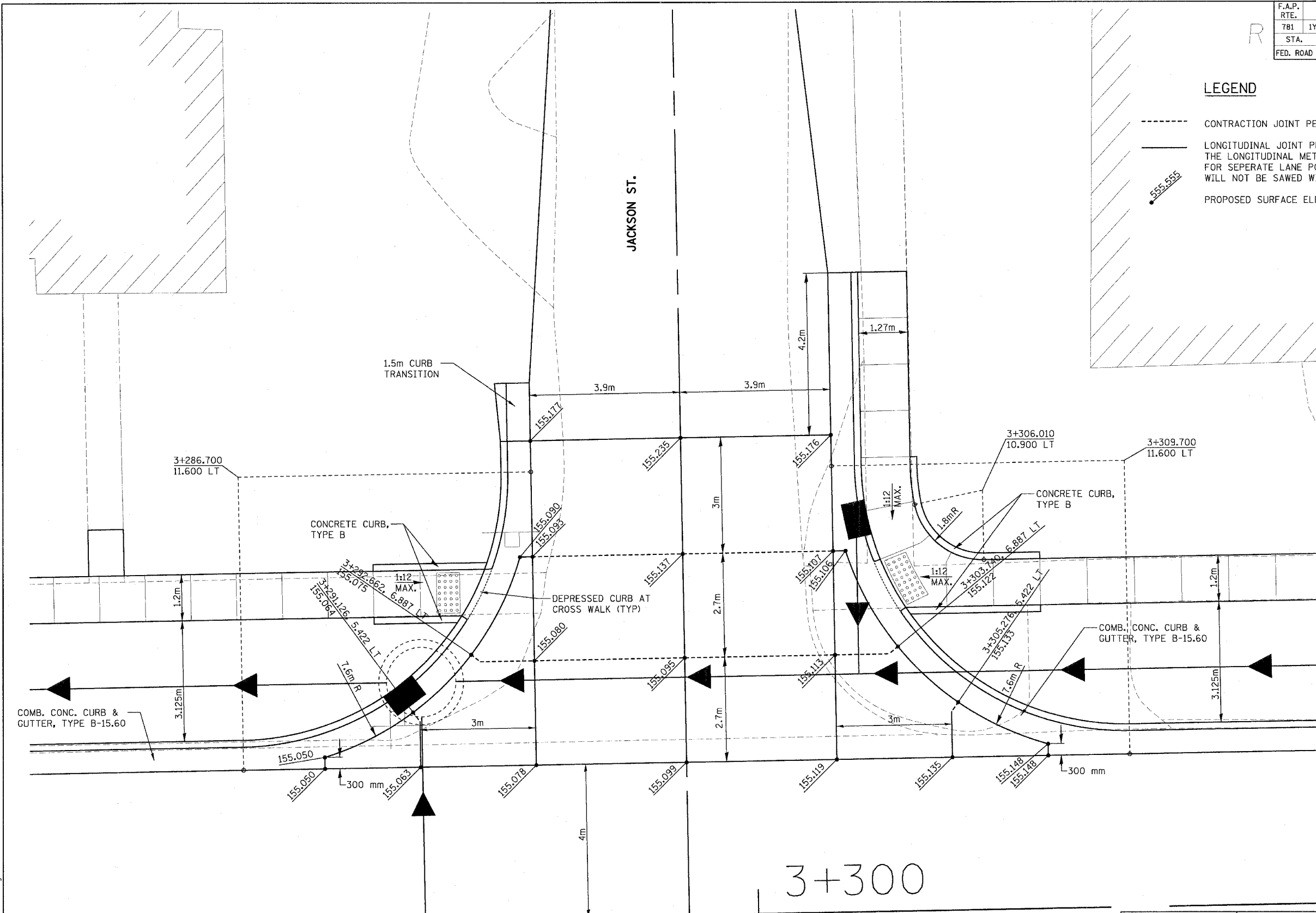


F.A.P. RTE.	SECTION	COUNTY	TOTAL SHEETS	SHEET NO.
781	1YRS, 2ZRS-1	CRAWFORD	378	155
STA.		TO STA.		
FED. ROAD DIST. NO.		ILLINOIS	FED. AID PROJECT	

LEGEND

- CONTRACTION JOINT PER STD. 420001
- LONGITUDINAL JOINT PER STD. 420001
- THE LONGITUDINAL METAL JOINT TYPE C MAY BE USED FOR SEPERATE LANE POURS, THE LONGITUDINAL JOINT WILL NOT BE SAWED WITH SEPERATE LANE POURS.
- 555.555 PROPOSED SURFACE ELEVATION



Ⓞ STA. 10+000 JACKSON ST. =
 Ⓞ STA. 3+298.200 IL. RTE. 33

REVISIONS	
NAME	DATE

ILLINOIS DEPARTMENT OF TRANSPORTATION

**INTERSECTION DETAIL
JACKSON ST.**

SCALE AS SHOWN DRAWN BY EDW
 DATE MARCH 20, 2008 CHECKED BY RGH

PLOT DATE = 3/26/2008
 FILE NAME = H:\4428\105\105.dwg

H. M. & G. NO. 4420