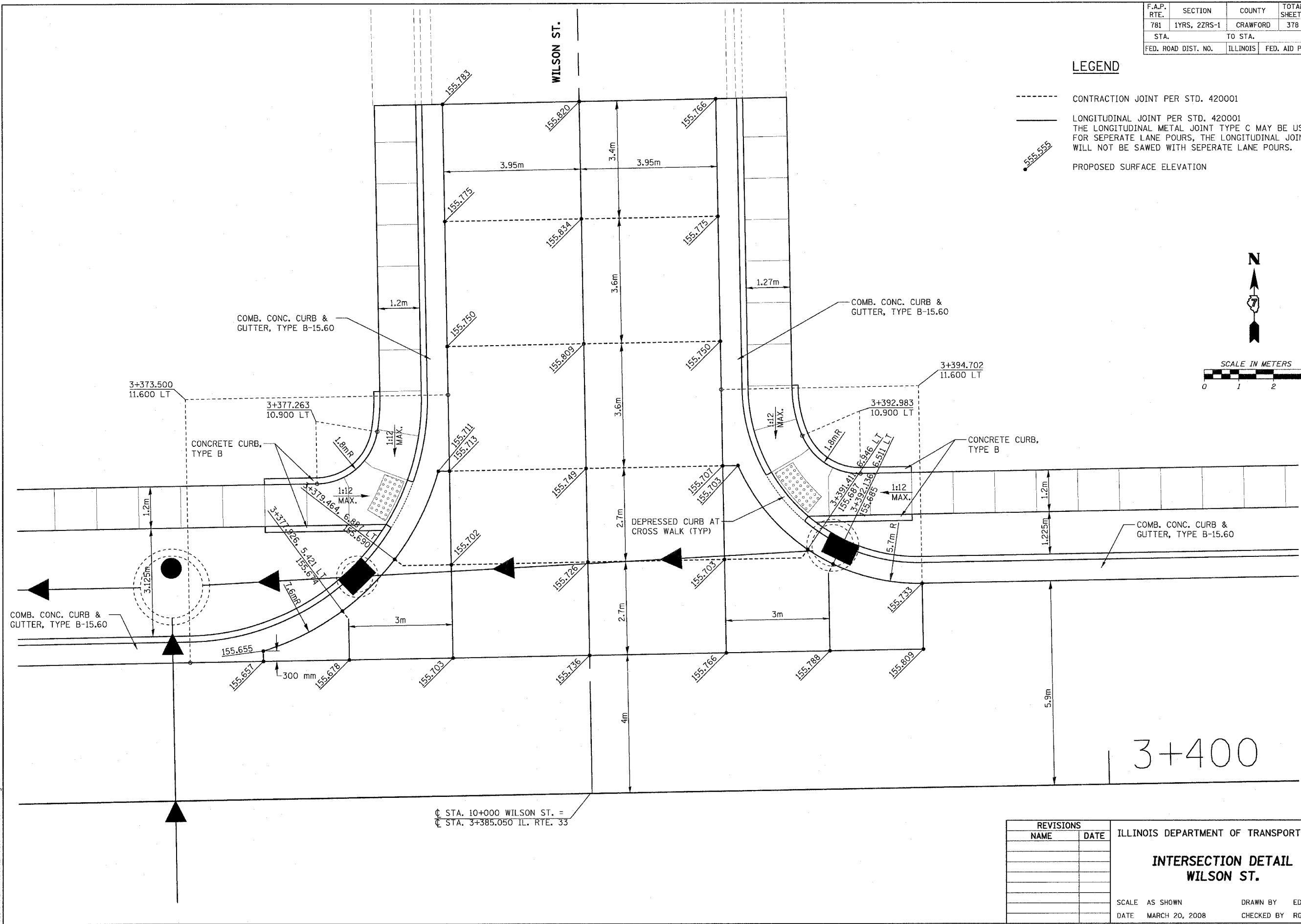
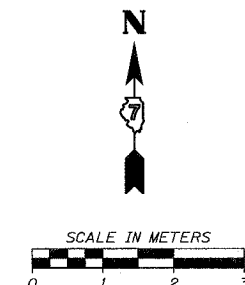


F.A.P. RTE.	SECTION	COUNTY	TOTAL SHEETS	SHEET NO.
781	1YRS, 2ZRS-1	CRAWFORD	378	157
STA.		TO STA.		
FED. ROAD DIST. NO.	ILLINOIS	FED. AID PROJECT		

LEGEND

- CONTRACTION JOINT PER STD. 420001
- LONGITUDINAL JOINT PER STD. 420001
- 555.555 PROPOSED SURFACE ELEVATION
- THE LONGITUDINAL METAL JOINT TYPE C MAY BE USED FOR SEPERATE LANE POURS, THE LONGITUDINAL JOINT WILL NOT BE SAWED WITH SEPERATE LANE POURS.



© STA. 10+000 WILSON ST. =
 © STA. 3+385.050 IL. RTE. 33

3+400

REVISIONS	
NAME	DATE

ILLINOIS DEPARTMENT OF TRANSPORTATION
INTERSECTION DETAIL
WILSON ST.
 SCALE AS SHOWN
 DATE MARCH 20, 2008
 DRAWN BY EDW
 CHECKED BY RGH

PLOT DATE = 3/20/2008
 FILE NAME = H:\4281\0157.mxd

H. M. & G. NO. 4420