

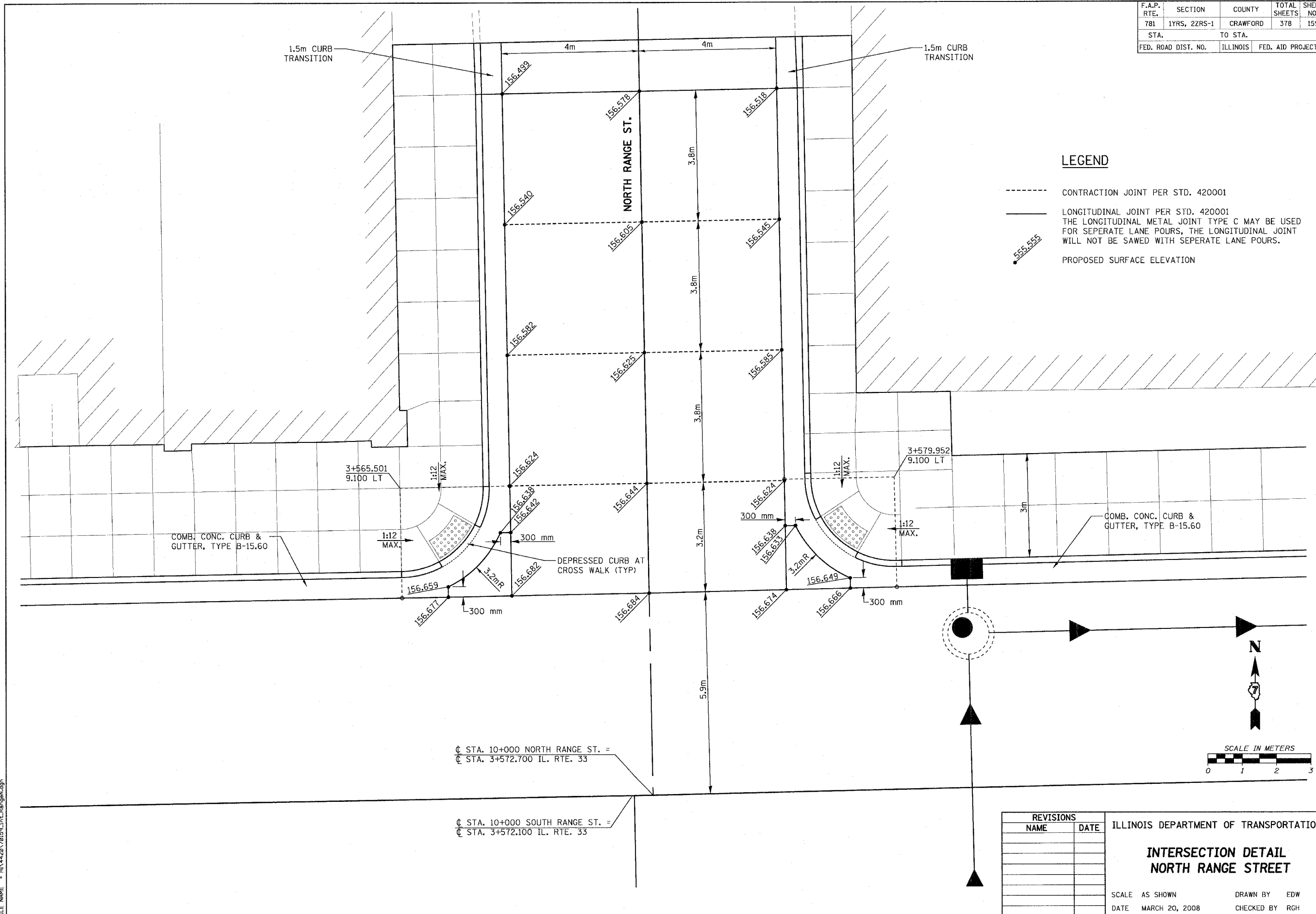
F.A.P. RTE.	SECTION	COUNTY	TOTAL SHEETS	SHEET NO.
781	1YRS, 2ZRS-1	CRAWFORD	378	159
STA.		TO STA.		
FED. ROAD DIST. NO.		ILLINOIS	FED. AID PROJECT	

1.5m CURB TRANSITION

1.5m CURB TRANSITION

LEGEND

- CONTRACTION JOINT PER STD. 420001
- LONGITUDINAL JOINT PER STD. 420001
THE LONGITUDINAL METAL JOINT TYPE C MAY BE USED FOR SEPERATE LANE POURS, THE LONGITUDINAL JOINT WILL NOT BE SAWED WITH SEPERATE LANE POURS.
- 555.555 PROPOSED SURFACE ELEVATION



⊕ STA. 10+000 NORTH RANGE ST. =
⊕ STA. 3+572.700 IL. RTE. 33

⊕ STA. 10+000 SOUTH RANGE ST. =
⊕ STA. 3+572.100 IL. RTE. 33

REVISIONS	
NAME	DATE

ILLINOIS DEPARTMENT OF TRANSPORTATION

**INTERSECTION DETAIL
NORTH RANGE STREET**

SCALE AS SHOWN
DATE MARCH 20, 2008
DRAWN BY EDW
CHECKED BY RGH

PLOT DATE = 3/28/2008
FILE NAME = H:\1420\170191\Int_Range.dgn

H. M. & G. NO. 4420