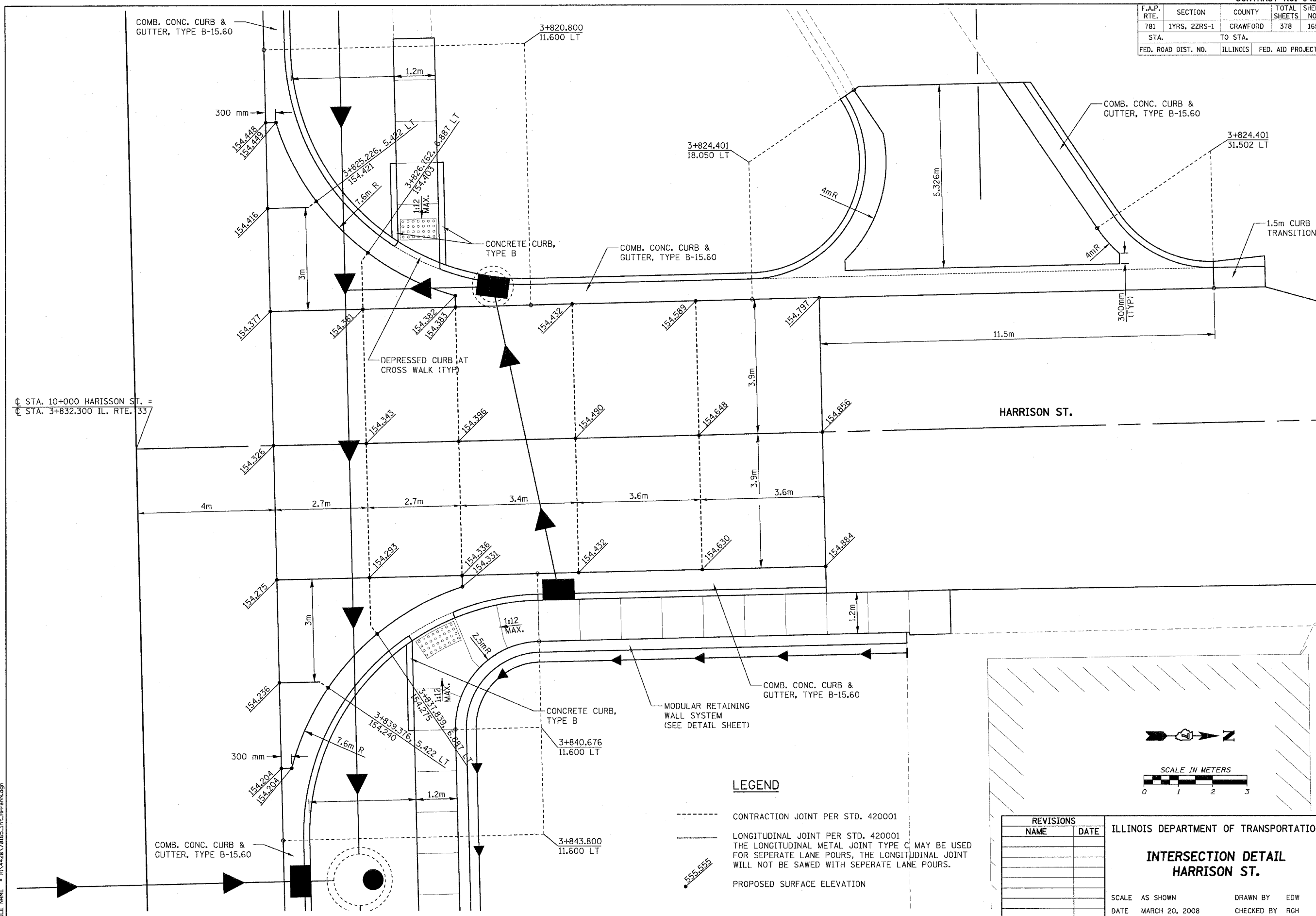


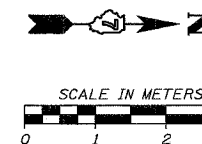
F.A.P. RTE.	SECTION	COUNTY	TOTAL SHEETS	SHEET NO.
781	1YRS, 2ZRS-1	CRAWFORD	378	165
STA.		TO STA.		
FED. ROAD DIST. NO.		ILLINOIS	FED. AID PROJECT	



CL STA. 10+000 HARRISON ST. =
CL STA. 3+832.300 IL. RTE. 33

LEGEND

- CONTRACTION JOINT PER STD. 420001
- LONGITUDINAL JOINT PER STD. 420001
THE LONGITUDINAL METAL JOINT TYPE C MAY BE USED FOR SEPARATE LANE POURS, THE LONGITUDINAL JOINT WILL NOT BE SAWED WITH SEPARATE LANE POURS.
- 555.555 PROPOSED SURFACE ELEVATION



REVISIONS		ILLINOIS DEPARTMENT OF TRANSPORTATION
NAME	DATE	
		<p align="center">INTERSECTION DETAIL HARRISON ST.</p> <p>SCALE AS SHOWN DRAWN BY EDW DATE MARCH 20, 2008 CHECKED BY RGH</p>

PLOT DATE = 3/20/2008
 FILE NAME = H:\42001\0185\int\hrrnN.dgn