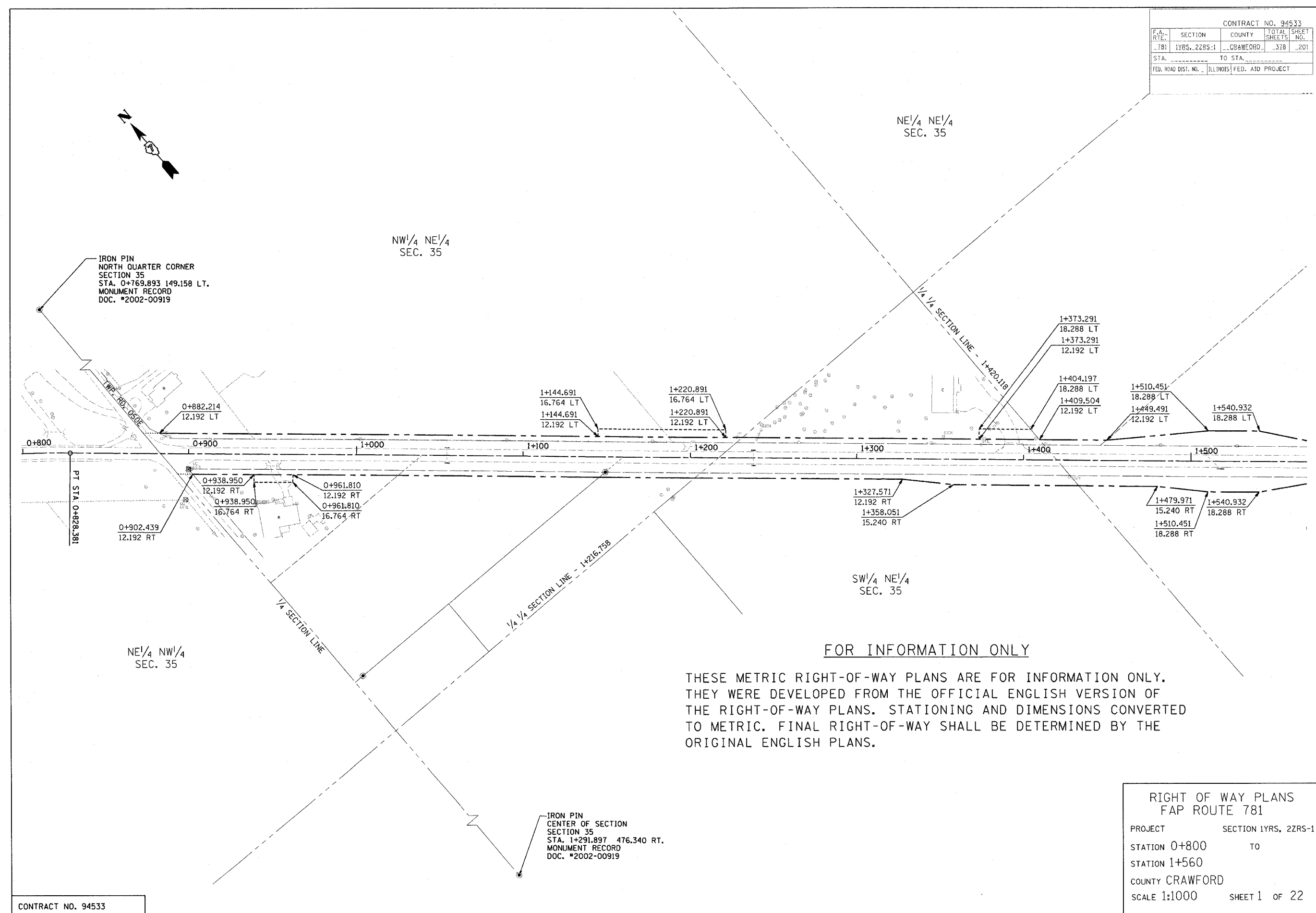


CONTRACT NO. 94533				
F.A. RTE.	SECTION	COUNTY	TOTAL SHEETS	SHEET NO.
781	1YRS, 2ZRS-1	CRAWFORD	328	201
STA.	TO STA.			
FED. ROAD DIST. NO. ILLINOIS FED. AID PROJECT				



IRON PIN  
NORTH QUARTER CORNER  
SECTION 35  
STA. 0+769.893 149.158 LT.  
MONUMENT RECORD  
DOC. #2002-00919

IRON PIN  
CENTER OF SECTION  
SECTION 35  
STA. 1+291.897 476.340 RT.  
MONUMENT RECORD  
DOC. #2002-00919

FOR INFORMATION ONLY

THESE METRIC RIGHT-OF-WAY PLANS ARE FOR INFORMATION ONLY. THEY WERE DEVELOPED FROM THE OFFICIAL ENGLISH VERSION OF THE RIGHT-OF-WAY PLANS. STATIONING AND DIMENSIONS CONVERTED TO METRIC. FINAL RIGHT-OF-WAY SHALL BE DETERMINED BY THE ORIGINAL ENGLISH PLANS.

CONTRACT NO. 94533

RIGHT OF WAY PLANS  
FAP ROUTE 781  
PROJECT SECTION 1YRS, 2ZRS-1  
STATION 0+800 TO  
STATION 1+560  
COUNTY CRAWFORD  
SCALE 1:1000 SHEET 1 OF 22