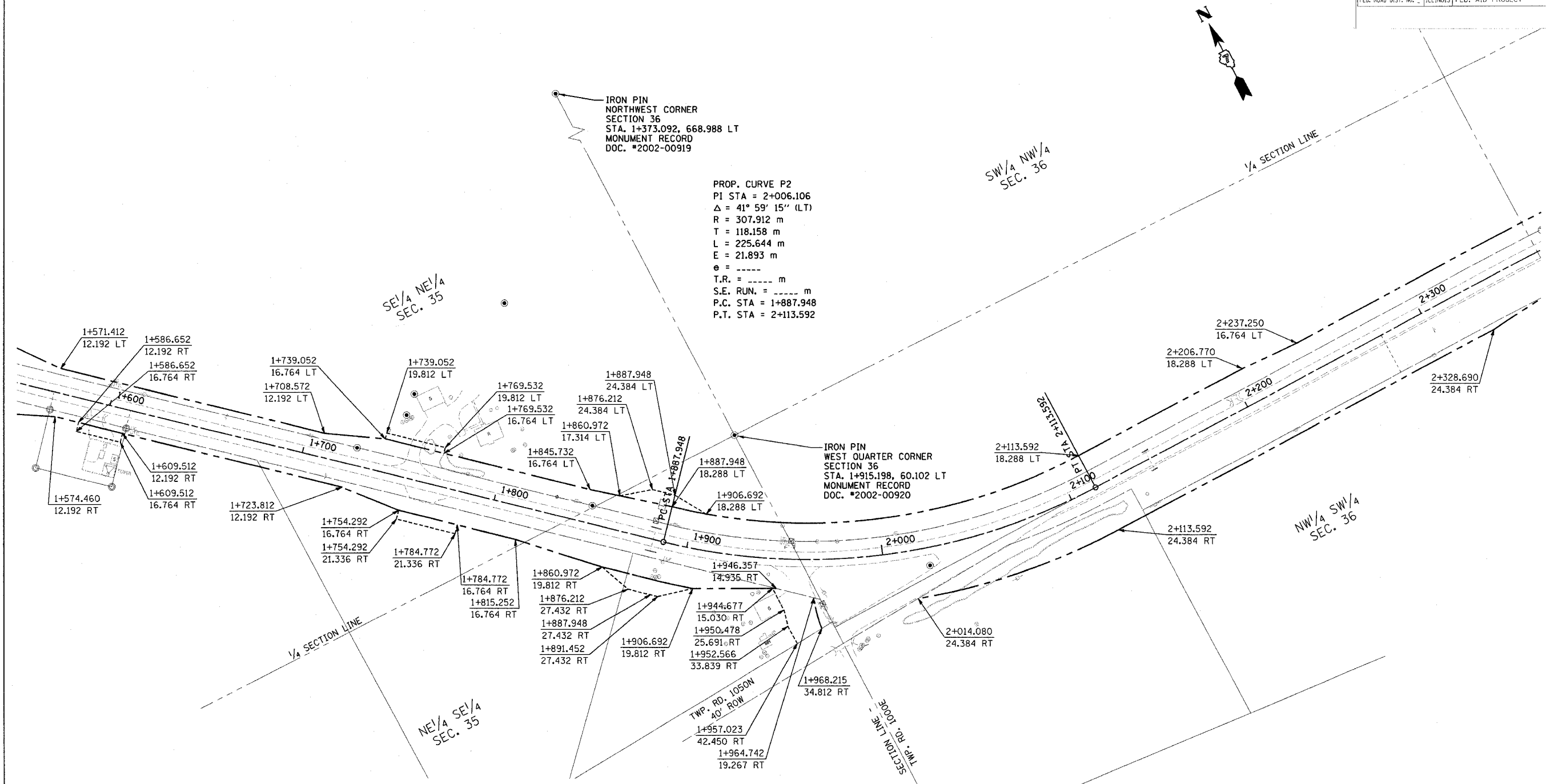


CONTRACT NO. 94533			
F.A. RTE.	SECTION	COUNTY	TOTAL SHEET NO.
781	1YRS-2ZRS-1	CRAWFORD	318 202
STA.	TO STA.		
FED. ROAD DIST. NO.	ILLINOIS	FED. AID PROJECT	



PROP. CURVE P2
 PI STA = 2+006.106
 $\Delta = 41^\circ 59' 15''$ (LT)
 R = 307.912 m
 T = 118.158 m
 L = 225.644 m
 E = 21.893 m
 e = -----
 T.R. = ----- m
 S.E. RUN. = ----- m
 P.C. STA = 1+887.948
 P.T. STA = 2+113.592

FOR INFORMATION ONLY

THESE METRIC RIGHT-OF-WAY PLANS ARE FOR INFORMATION ONLY. THEY WERE DEVELOPED FROM THE OFFICIAL ENGLISH VERSION OF THE RIGHT-OF-WAY PLANS. STATIONING AND DIMENSIONS CONVERTED TO METRIC. FINAL RIGHT-OF-WAY SHALL BE DETERMINED BY THE ORIGINAL ENGLISH PLANS.

CONTRACT NO. 94533

RIGHT OF WAY PLANS
FAP ROUTE 781
 PROJECT SECTION 1YRS, 2ZRS-1
 STATION 1+560 TO
 STATION 2+360
 COUNTY CRAWFORD
 SCALE 1:1000 SHEET 2 OF 22