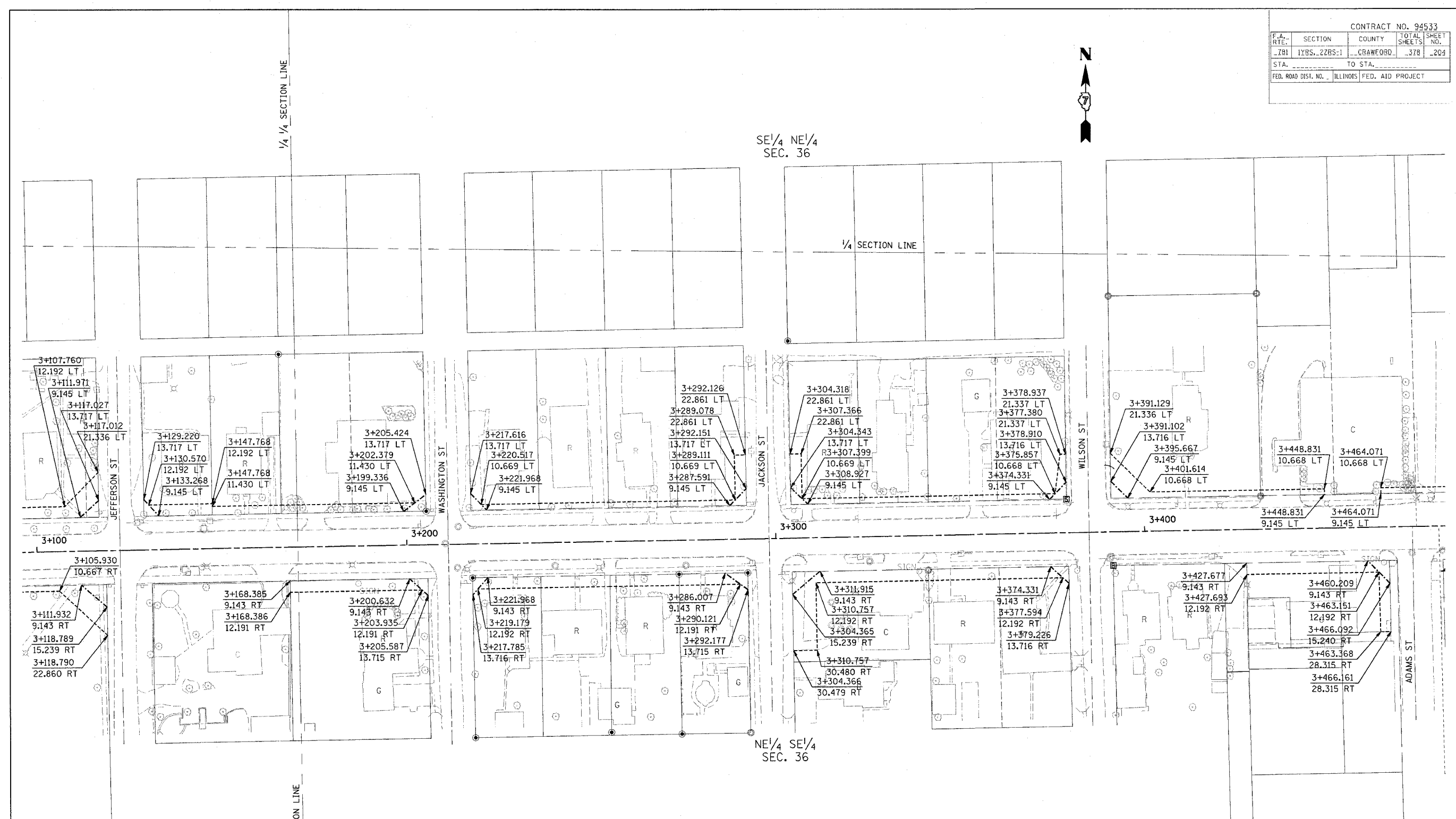


CONTRACT NO. 94533				
F.A. RT#	SECTION	COUNTY	TOTAL SHEETS	SHEET NO.
781	1YRS. 2ZRS-1	CRAWFORD	378	209
STA.	TO STA.			
FED. ROAD DIST. NO.	ILLINOIS FED. AID PROJECT			



FOR INFORMATION ONLY

THESE METRIC RIGHT-OF-WAY PLANS ARE FOR INFORMATION ONLY. THEY WERE DEVELOPED FROM THE OFFICIAL ENGLISH VERSION OF THE RIGHT-OF-WAY PLANS. STATIONING AND DIMENSIONS CONVERTED TO METRIC. FINAL RIGHT-OF-WAY SHALL BE DETERMINED BY THE ORIGINAL ENGLISH PLANS.

RIGHT OF WAY PLANS
FAP ROUTE 781
 PROJECT SECTION 1YRS. 2ZRS-1
 STATION 3+100 TO
 STATION 3+475
 COUNTY CRAWFORD
 SCALE 1:500 SHEET 4 OF 22