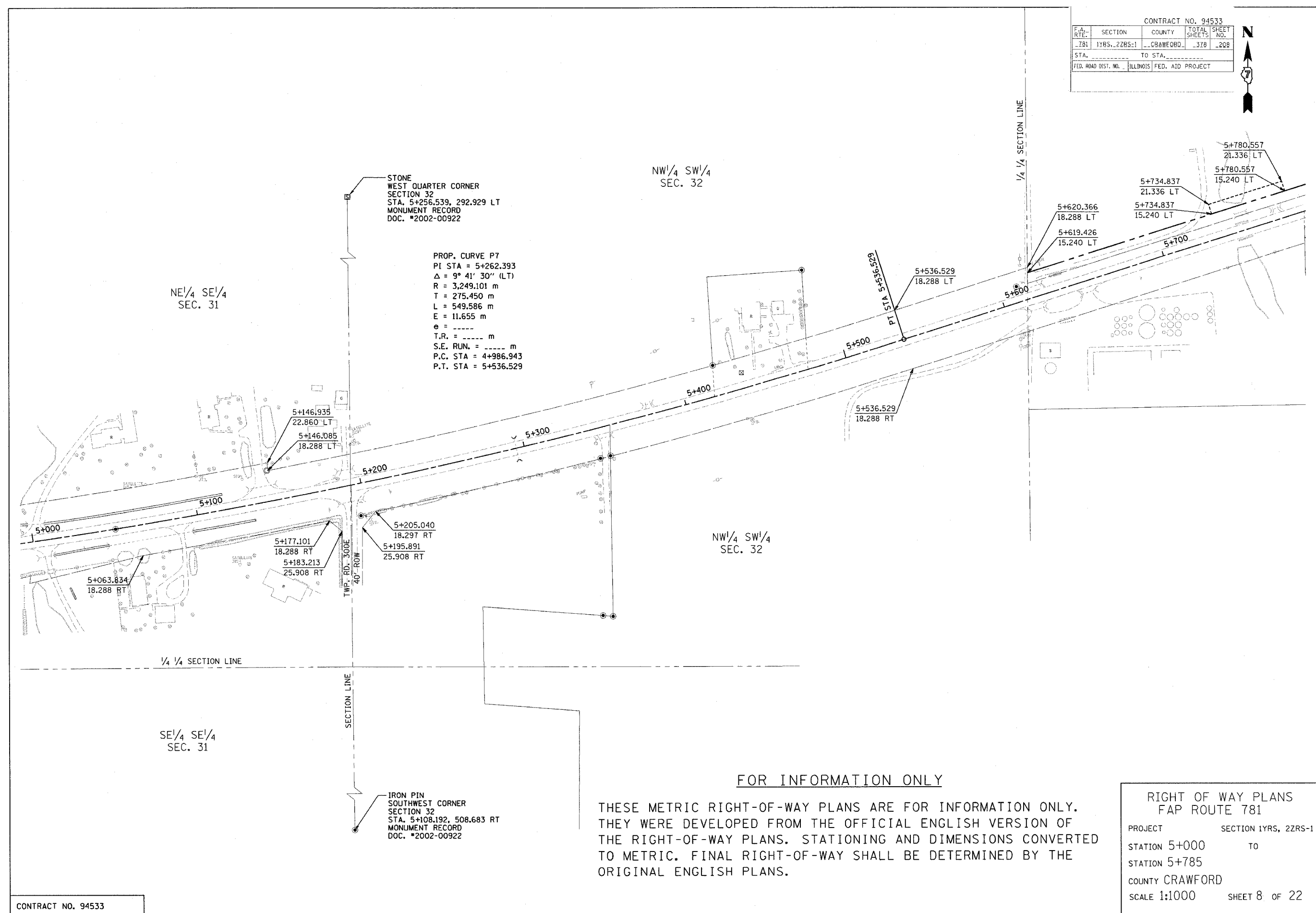


CONTRACT NO. 94533				
F.A. RTE.	SECTION	COUNTY	TOTAL SHEETS	SHEET NO.
781	1YRS.-2ZRS-1	CRAWFORD	378	208
STA.		TO STA.		
FED. ROAD DIST. NO.		ILLINOIS FED. AID PROJECT		



PROP. CURVE P7
 PI STA = 5+262.393
 $\Delta = 9^\circ 41' 30''$ (LT)
 R = 3,249.101 m
 T = 275.450 m
 L = 549.586 m
 E = 11.655 m
 e = -----
 T.R. = ----- m
 S.E. RUN. = ----- m
 P.C. STA = 4+986.943
 P.T. STA = 5+536.529

FOR INFORMATION ONLY

THESE METRIC RIGHT-OF-WAY PLANS ARE FOR INFORMATION ONLY. THEY WERE DEVELOPED FROM THE OFFICIAL ENGLISH VERSION OF THE RIGHT-OF-WAY PLANS. STATIONING AND DIMENSIONS CONVERTED TO METRIC. FINAL RIGHT-OF-WAY SHALL BE DETERMINED BY THE ORIGINAL ENGLISH PLANS.

RIGHT OF WAY PLANS
 FAP ROUTE 781
 PROJECT SECTION 1YRS, 2ZRS-1
 STATION 5+000 TO
 STATION 5+785
 COUNTY CRAWFORD
 SCALE 1:1000 SHEET 8 OF 22