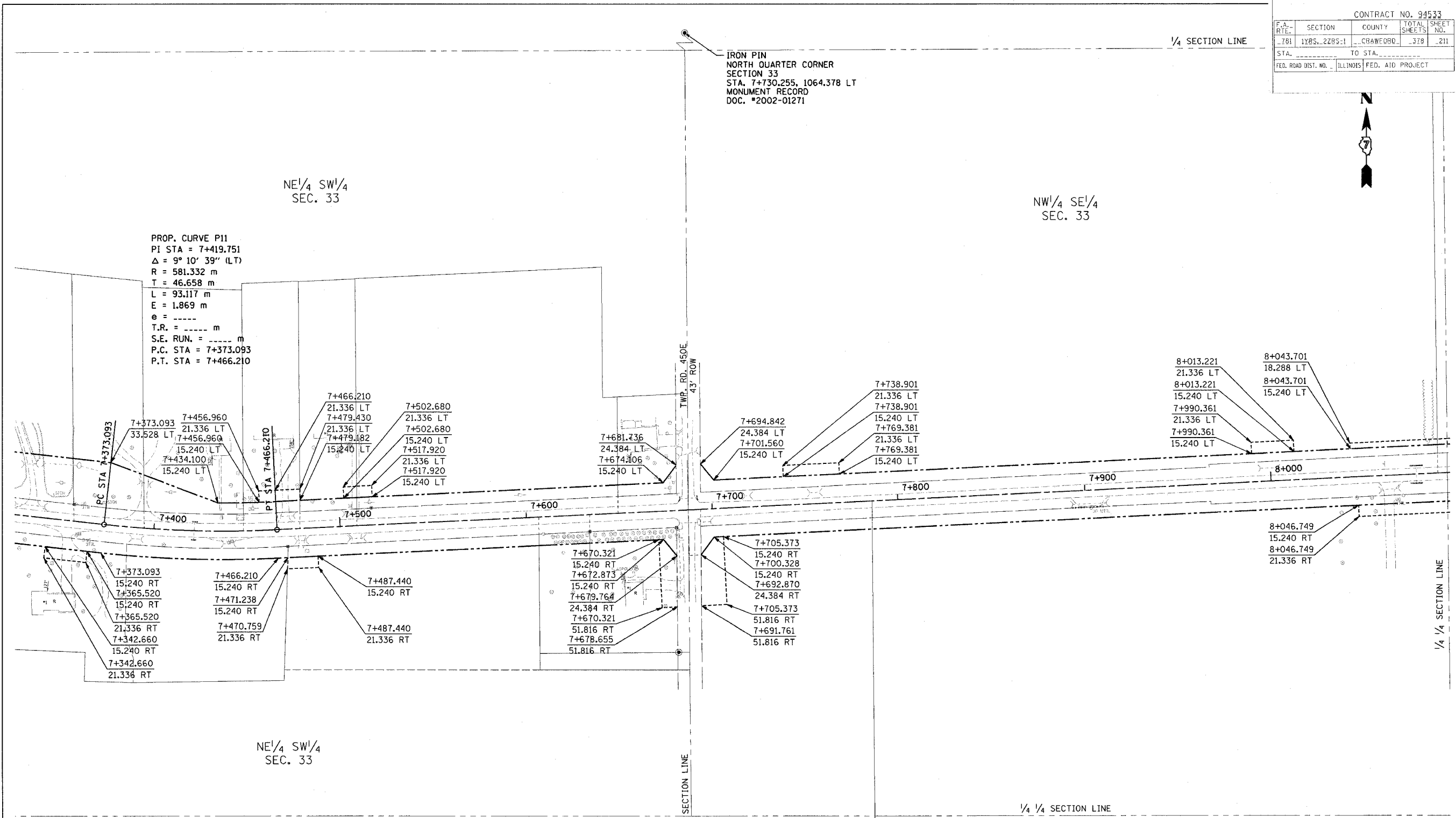


CONTRACT NO. 94533			
F.A. RTE.	SECTION	COUNTY	TOTAL SHEETS
781	1YRS, 2ZRS-1	CRAWFORD	378
STA.	TO STA.		SHEET NO.
			211
FED. ROAD DIST. NO.	ILLINOIS FED. AID PROJECT		



PROP. CURVE P11
 PI STA = 7+419.751
 $\Delta = 9^\circ 10' 39''$ (LT)
 R = 581.332 m
 T = 46.658 m
 L = 93.117 m
 E = 1.869 m
 e = -----
 T.R. = ----- m
 S.E. RUN. = ----- m
 P.C. STA = 7+373.093
 P.T. STA = 7+466.210

FOR INFORMATION ONLY

THESE METRIC RIGHT-OF-WAY PLANS ARE FOR INFORMATION ONLY. THEY WERE DEVELOPED FROM THE OFFICIAL ENGLISH VERSION OF THE RIGHT-OF-WAY PLANS. STATIONING AND DIMENSIONS CONVERTED TO METRIC. FINAL RIGHT-OF-WAY SHALL BE DETERMINED BY THE ORIGINAL ENGLISH PLANS.

RIGHT OF WAY PLANS
FAP ROUTE 781

PROJECT SECTION 1YRS, 2ZRS-1
 STATION 7+335 TO
 STATION 8+090
 COUNTY CRAWFORD
 SCALE 1:1000 SHEET 11 OF 22

CONTRACT NO. 94533

IRON PIN
 SOUTH QUARTER CORNER
 SECTION 33
 STA. 8+046.749, 21.336 RT
 MONUMENT RECORD
 DOC. #2002-01271

IRON PIN
 NORTH QUARTER CORNER
 SECTION 33
 STA. 7+730.255, 1064.378 LT
 MONUMENT RECORD
 DOC. #2002-01271