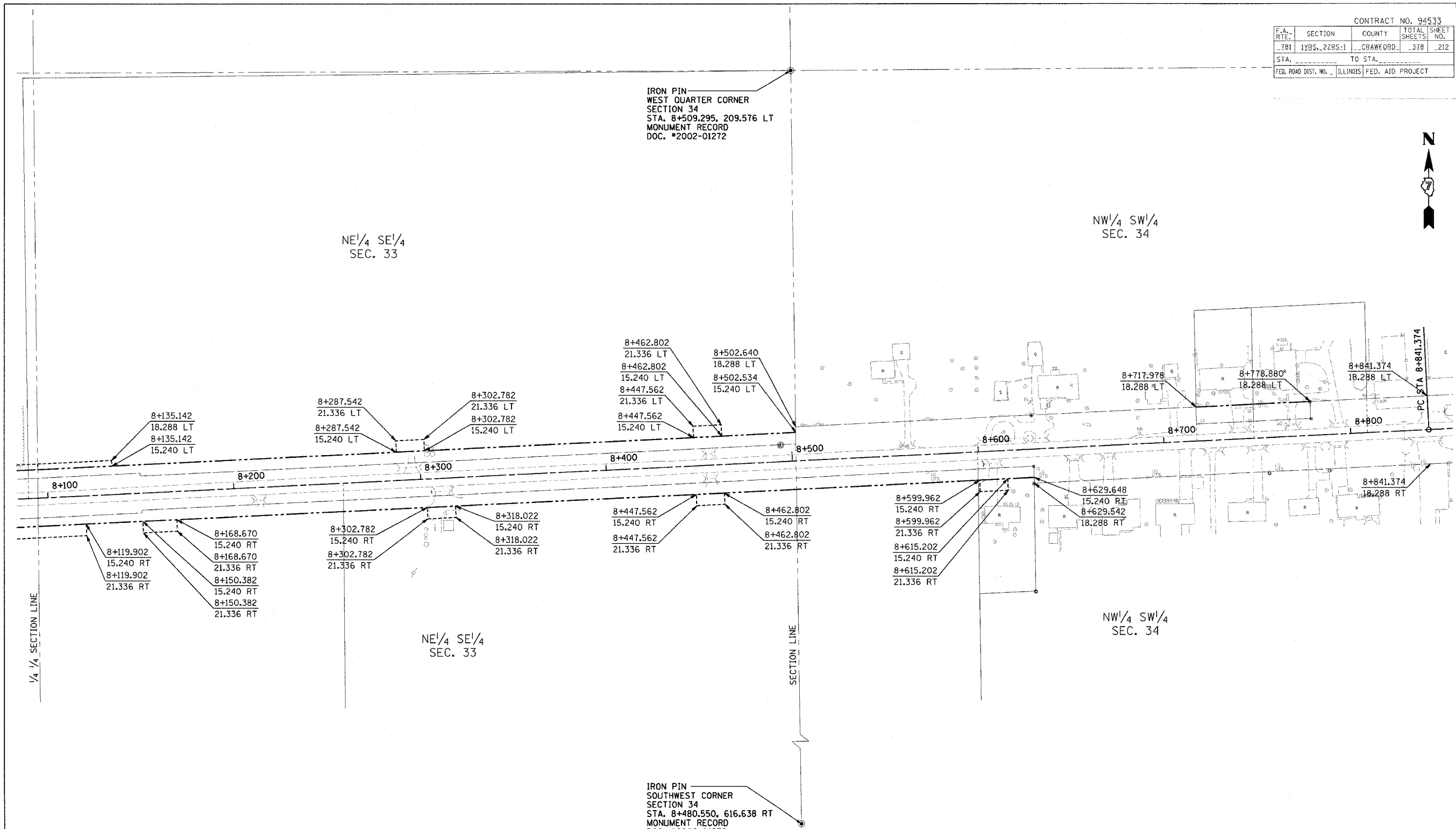


CONTRACT NO. 94533				
F.A. SHEETS	SECTION	COUNTY	TOTAL SHEETS	SHEET NO.
-781	1YRS. 2ZRS-1	CRAWFORD	378	212
STA. _____		TO STA. _____		
FED. ROAD DIST. NO. ILLINOIS FED. AID PROJECT				



FOR INFORMATION ONLY

THESE METRIC RIGHT-OF-WAY PLANS ARE FOR INFORMATION ONLY. THEY WERE DEVELOPED FROM THE OFFICIAL ENGLISH VERSION OF THE RIGHT-OF-WAY PLANS. STATIONING AND DIMENSIONS CONVERTED TO METRIC. FINAL RIGHT-OF-WAY SHALL BE DETERMINED BY THE ORIGINAL ENGLISH PLANS.

IRON PIN
SOUTHWEST CORNER
SECTION 34
STA. 8+480.550, 616.638 RT
MONUMENT RECORD
DOC. #2002-01272

RIGHT OF WAY PLANS
FAP ROUTE 781

PROJECT SECTION 1YRS, 2ZRS-1
STATION 8+090 TO
STATION 8+850
COUNTY CRAWFORD
SCALE 1:1000 SHEET 12 OF 22