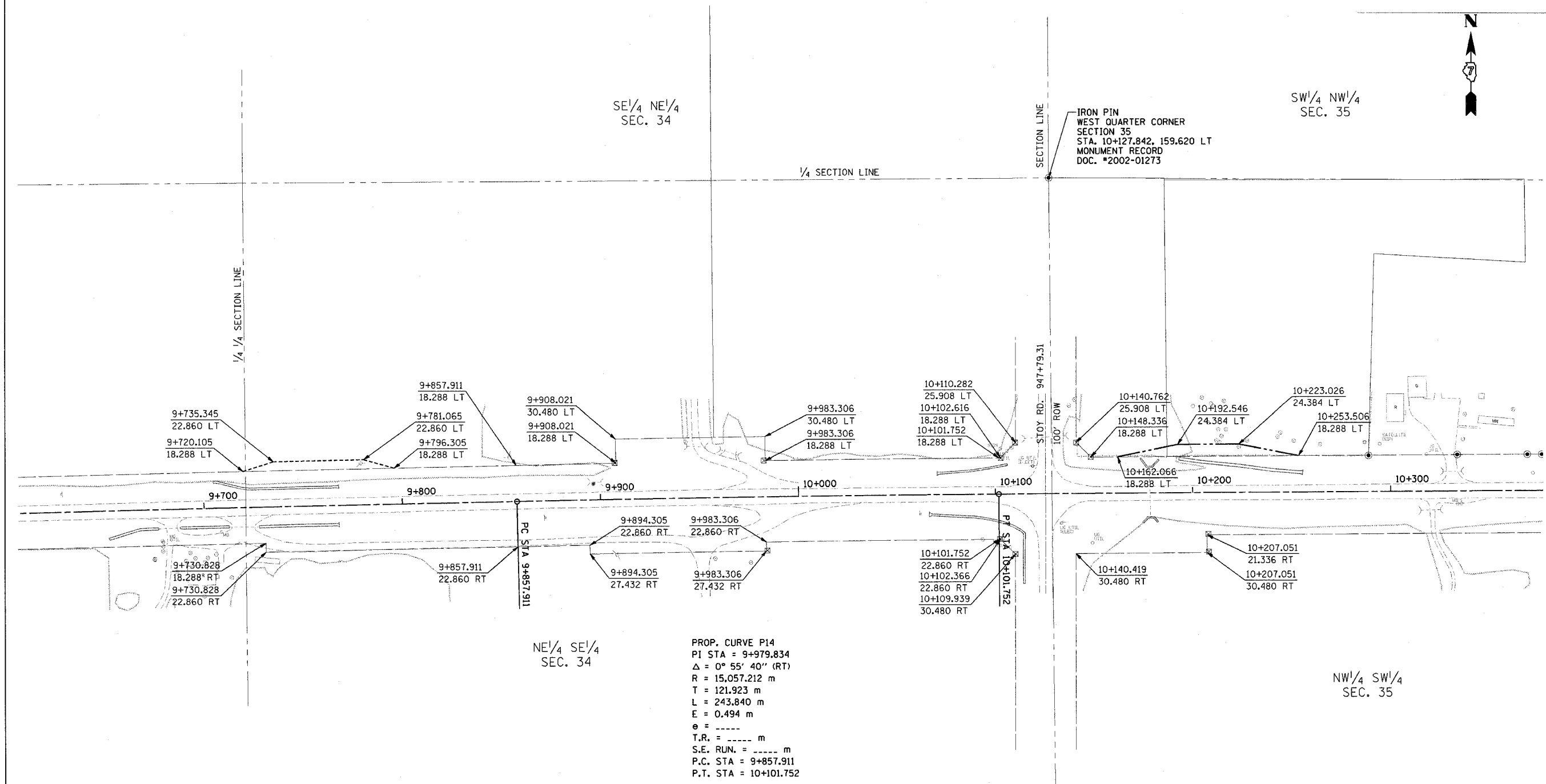


CONTRACT NO. 94533				
F.A. RTE.	SECTION	COUNTY	TOTAL SHEETS	SHEET NO.
781	1YRS-2ZRS-1	CRAWFORD	378	214
STA.	TO STA.			
FED. ROAD DIST. NO.	ILLINOIS	FED. AID PROJECT		



PROP. CURVE P14
 PI STA = 9+979.834
 $\Delta = 0^\circ 55' 40''$ (RT)
 R = 15,057.212 m
 T = 121.923 m
 L = 243.840 m
 E = 0.494 m
 e = -----
 T.R. = ----- m
 S.E. RUN. = ----- m
 P.C. STA = 9+857.911
 P.T. STA = 10+101.752

FOR INFORMATION ONLY

THESE METRIC RIGHT-OF-WAY PLANS ARE FOR INFORMATION ONLY. THEY WERE DEVELOPED FROM THE OFFICIAL ENGLISH VERSION OF THE RIGHT-OF-WAY PLANS. STATIONING AND DIMENSIONS CONVERTED TO METRIC. FINAL RIGHT-OF-WAY SHALL BE DETERMINED BY THE ORIGINAL ENGLISH PLANS.

CONTRACT NO. 94533

RIGHT OF WAY PLANS
FAP ROUTE 781
 PROJECT SECTION 1YRS, 2ZRS-1
 STATION 9+610 TO
 STATION 10+375
 COUNTY CRAWFORD
 SCALE 1:1000 SHEET 14 OF 22