

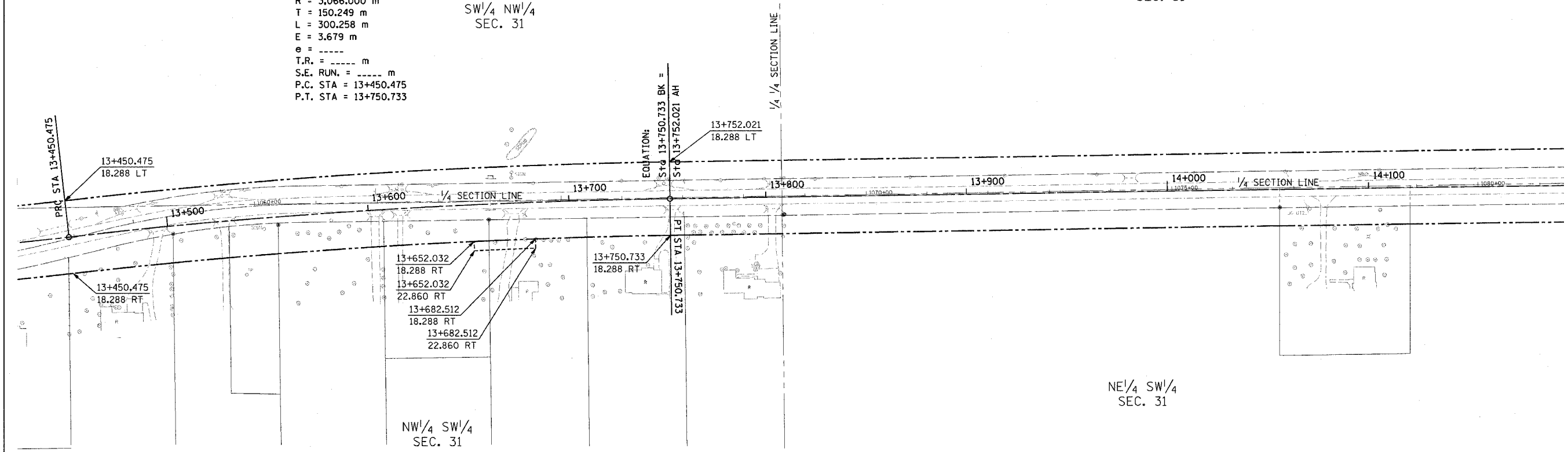
|                     |              |                           |                 |
|---------------------|--------------|---------------------------|-----------------|
| CONTRACT NO. 94533  |              |                           |                 |
| F.A. RTE.           | SECTION      | COUNTY                    | TOTAL SHEET NO. |
| 781                 | 1YRS, 2ZRS-1 | CRAWFORD                  | 378 219         |
| STA.                |              | TO STA.                   |                 |
| FED. ROAD DIST. NO. |              | ILLINOIS FED. AID PROJECT |                 |



PROP. CURVE P19  
 PI STA = 13+600.724  
 $\Delta = 5^\circ 36' 40''$  (RT)  
 R = 3,066.000 m  
 T = 150.249 m  
 L = 300.258 m  
 E = 3.679 m  
 e = -----  
 T.R. = ----- m  
 S.E. RUN. = ----- m  
 P.C. STA = 13+450.475  
 P.T. STA = 13+750.733

SW $\frac{1}{4}$  NW $\frac{1}{4}$   
 SEC. 31

SE $\frac{1}{4}$  NW $\frac{1}{4}$   
 SEC. 31



NW $\frac{1}{4}$  SW $\frac{1}{4}$   
 SEC. 31

NE $\frac{1}{4}$  SW $\frac{1}{4}$   
 SEC. 31

FOR INFORMATION ONLY

THESE METRIC RIGHT-OF-WAY PLANS ARE FOR INFORMATION ONLY. THEY WERE DEVELOPED FROM THE OFFICIAL ENGLISH VERSION OF THE RIGHT-OF-WAY PLANS. STATIONING AND DIMENSIONS CONVERTED TO METRIC. FINAL RIGHT-OF-WAY SHALL BE DETERMINED BY THE ORIGINAL ENGLISH PLANS.

CONTRACT NO. 94533

RIGHT OF WAY PLANS  
 FAP ROUTE 781  
 PROJECT SECTION 1YRS, 2ZRS-1  
 STATION 13+430 TO  
 STATION 14+195  
 COUNTY CRAWFORD  
 SCALE 1:1000 SHEET 19 OF 22