

T.R.	SECTION	COUNTY	TOTAL SHEETS	SHEET NO.
69	*	SHELBY	12	1
FED. ROAD DIST. NO.		ILLINOIS	FED. AID PROJECT	

* 01-19113-00-BR

STATE OF ILLINOIS DEPARTMENT OF TRANSPORTATION PLANS FOR PROPOSED HIGHWAY BRIDGE PROGRAM

**TOWNSHIP ROAD 69
SEC. 01-19113-00-BR
RURAL ROAD DISTRICT
SHELBY COUNTY
STRUCTURE NO. 087-3530
PROJECT NO. BROS-173 (135)
JOB NO. C-97-134-06**

INDEX OF DRAWINGS

- 1 COVER SHEET
- 2 SUMMARY OF QUANTITIES, GENERAL NOTES, TYPICAL SECTIONS, AND ENTRANCE DETAILS
- 3 PLAN & PROFILE
- 4-6 CROSS SECTIONS
- 7-12 BRIDGE PLANS

REQUIRED HIGHWAY STANDARDS

- 000001-05 STANDARD SYMBOLS, ABBREVIATIONS AND PATTERNS
- 280001-04 TEMPORARY EROSION CONTROL SYSTEMS
- 515001-02 NAME PLATE FOR BRIDGES
- 635006-02 REFLECTOR & TERMINAL MARKER PLACEMENT
- 701901 TRAFFIC CONTROL DEVICES
- B.L.R. 21-7 TYPICAL APPLICATION OF TRAFFIC CONTROL DEVICES FOR CONSTRUCTION ON RURAL LOCAL HIGHWAYS

UTILITY COMPANIES

ILLINOIS CONSOLIDATED TELEPHONE CO.
121 SOUTH 17th. STREET
MATTOON, ILLINOIS 61938
1-(217) 234-9997

SHELBY ELECTRIC COOPERATIVE
MR. JIM MATLOCK
P.O. BOX 560
SHELBYVILLE, ILLINOIS 62565
(217) 774-3986

EXISTING STRUCTURE NO. 087-3080

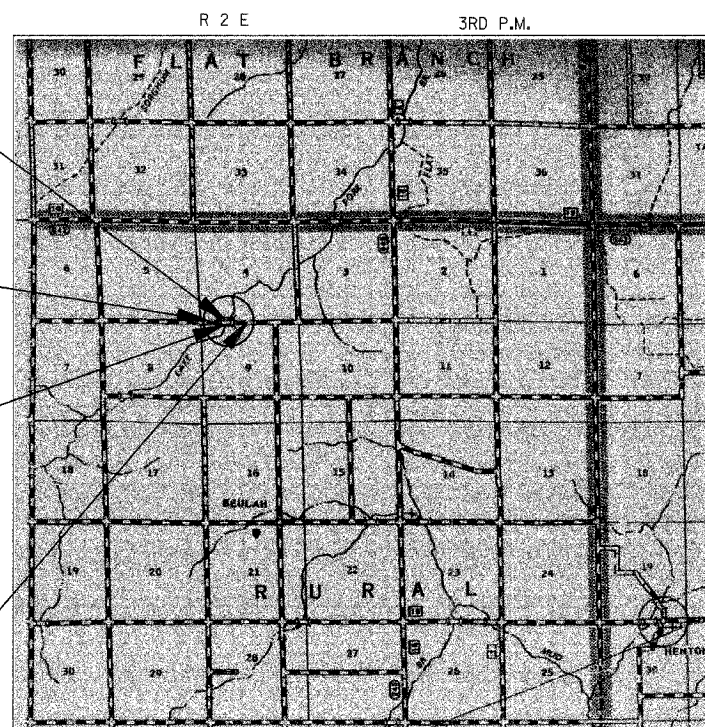
2-SPAN GIRDER BRIDGE WITH WOOD PLANK DECK ON STEEL I-BEAMS ON TIMBER ABUTMENTS, PIER, WINGWALLS AND PILES, STEEL RAILING AND 1" CONDUIT ON BOTTOM OF NORTH I-BEAM. LENGTH = 80'-0" WIDTH = 16'-9"

**PROJECT BEGINS
STA. 12+45.00**

STA. 15+12.13 SPECIAL BRIDGE DESIGN

2- SPAN 27" P.C.C. DECK BEAM BRIDGE
2-SPANS AT 62'-10 1/2". PILE BENT ABUTMENTS AND PIER. 128'-0" BK. TO BK. ABUTMENTS
24" CLEAR WIDTH, 20° SKEW LT.
STRUCTURE NO. 087-3530

**PROJECT ENDS
STA. 18+00.00**



LOCATION MAP

0 1 2 MILES
APPROXIMATE SCALE: 1 INCH = 1 MILE
NET LENGTH OF SECTION = 555.00 FEET = 0.1051 MILES
FUNCTIONAL CLASSIFICATION : LOCAL ROAD
CURRENT ADT 100
DESIGN SPEED = 30 MPH

SCALES

PLAN	1" = 50'	
PROFILE HORIZ.	1" = 50'	
PROFILE VERT.	1" = 5'	
CROSS SECTIONS HORIZ.	1" = 10'	
CROSS SECTIONS VERT.	1" = 5'	

PLANS PREPARED BY:

International Engineering Consultants, Inc.
6420 South Sixth Street Road
Springfield, Illinois 62707
Tel. (217) 529-8027
Fax (217) 529-4543
e-mail: iespringfield@ie-consultants.com

188 W. Randolph St. Suite 1826
Chicago, Illinois 60601
Tel. (312) 920-9528
Fax. (312) 920-9570
e-Mail: icchicago@ie-consultants.com

CONTRACT NO. 95482



David Boomer 3-20-08
David Boomer, Illinois P.E. 062-043769 Date
Expires 11-30-2009

APPROVED 3-24-2008
Eldon Weeks
HIGHWAY COMM., RURAL ROAD DISTRICT

APPROVED 25 March 2008
S. A. [Signature]
COUNTY ENGINEER, SHELBY COUNTY

PASSED 4/4-2008
Marcus [Signature]
DISTRICT SEVEN ENGINEER OF
LOCAL ROADS & STREETS

Releasing For Bid Based on Limited Review
4/4-2008
Christina [Signature]
DEPUTY DIRECTOR OF HIGHWAYS,
REGION FOUR ENGINEER

STATE OF ILLINOIS
DEPARTMENT OF TRANSPORTATION

CALL **J.U.L.I.E.** (JOINT UTILITY LOCATION INFORMATION FOR EXCAVATORS)
18 Hours (12 working days) Before You Dig.
TOLL FREE: 1 (800) 892-0123