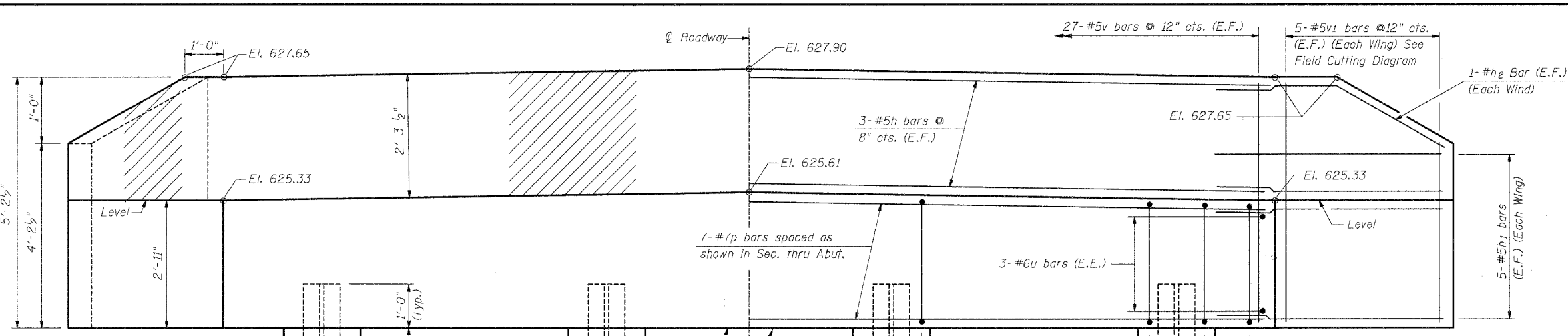
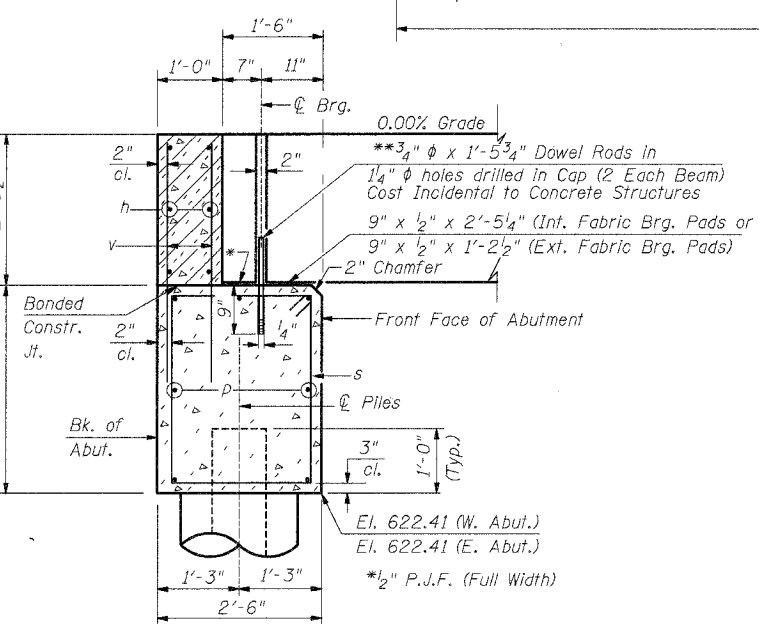
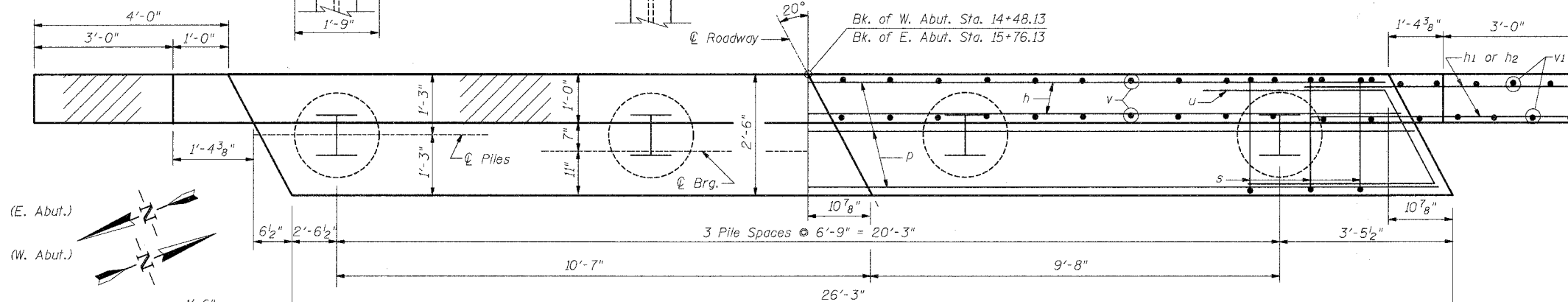


ROUTE NO. TR 69	SECTION *	COUNTY SHELBY	TOTAL SHEETS 12	SHEET NO. 11
FED. ROAD DIST. NO. 7		ILLINOIS PROJECT *01-19113-00-BR	SHEET 5 OF 6	

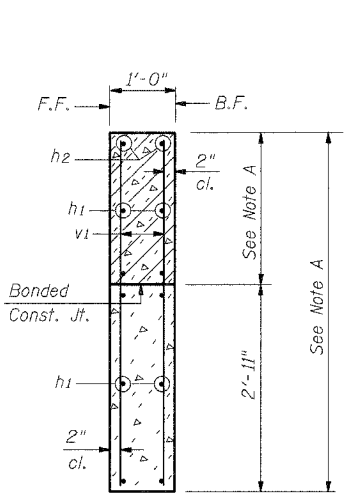


NOTE:
The hatched area of the wingwalls & backwall shall be poured after the beams are in place.



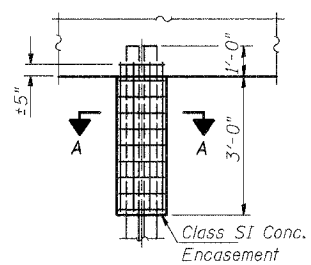
SECTION THRU ABUTMENT

**Dowel Rods to be grouted after beams are in place and prior to grouting the shear keys.



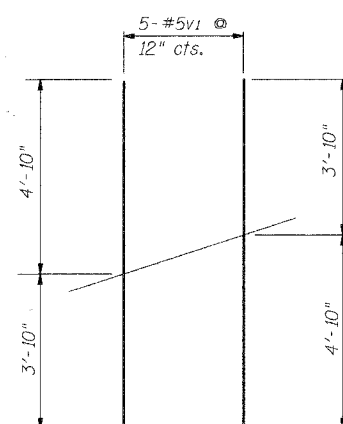
SECTION THRU WINGWALLS

NOTE A: See Elev. given on Elev. View



SECTION A-A

PILE ENCASEMENT DETAIL



FIELD CUTTING DIAGRAM

Order v1 bars full length, cut to fit in field

BILL OF MATERIAL

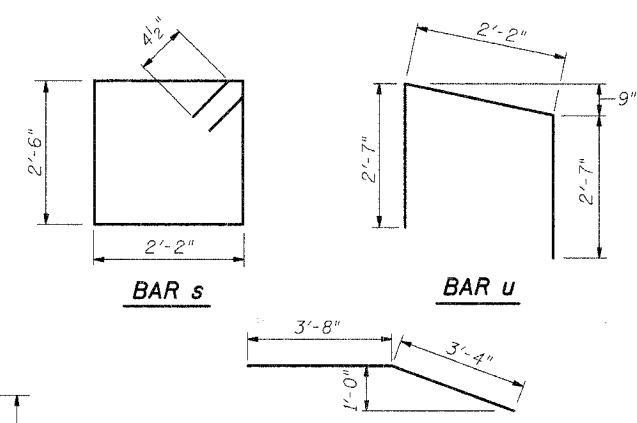
(2 Abutments)

Bar	No.	Size	Length	Shape
h	12	#5	25'-11"	—
h1	40	#5	6'-9"	—
h2	8	#5	7'-0"	—
p	14	#7	25'-11"	—
s	48	#4	10'-1"	□
u	12	#6	7'-4"	└
v	108	#5	4'-0"	—
v1	20	#5	8'-8"	—

ITEM	UNIT	QUANTITY
Reinforcement Bars	Pound	2500
Concrete Structures	Cu. Yd.	24.0
Furnishing Steel Piles, HP 10x42	Lin. Ft.	210
Driving Piles	Lin. Ft.	210
Test Piles	Each	2
Structure Excavation	Cu. Yd.	74
Concrete Encasement	Cu. Yd.	2.2

PILE DATA

- Type & Size = Steel HP 10 x 42
- Nominal Required Bearing = 335 kips
- Allowable Resistance Available = 112 kips
- Estimated Length = 35'
- Number Req'd. = 8 (Including 1 Test Pile @ Each Abut.)



BAR h2

ABUTMENT DETAILS
T.R. 69 OVER LAKE FORK CREEK
SEC. 01-19113-00-BR
SHELBY COUNTY
S.N. 087-3530
STA. 15+12.13

ie consultants
 6420 South Sixth Street
 Springfield, Illinois 62707
 Tel. (217) 529-8027
 Fax (217) 529-4543
 ieSpringfield@ie-consultants.com
 www.ie-consultants.com

DESIGNED BY: G.B.M.	CHECKED BY: D.R.B.	DRAWN BY: J.P.H.	DATE: March 2008
------------------------	-----------------------	---------------------	---------------------

FILE: G:\S01042\CD\01\042ABUT.DGN 3/21/2008 9:17:26 AM