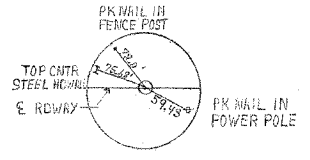


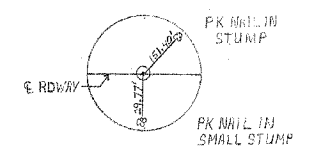
JERRY L. & MIANA R. JONES
PARCEL NO. 4

SEC. 19 TION., R 5E. 3rd P.M.

WITTENBERG FARMS, INC.
PARCEL NO. 5

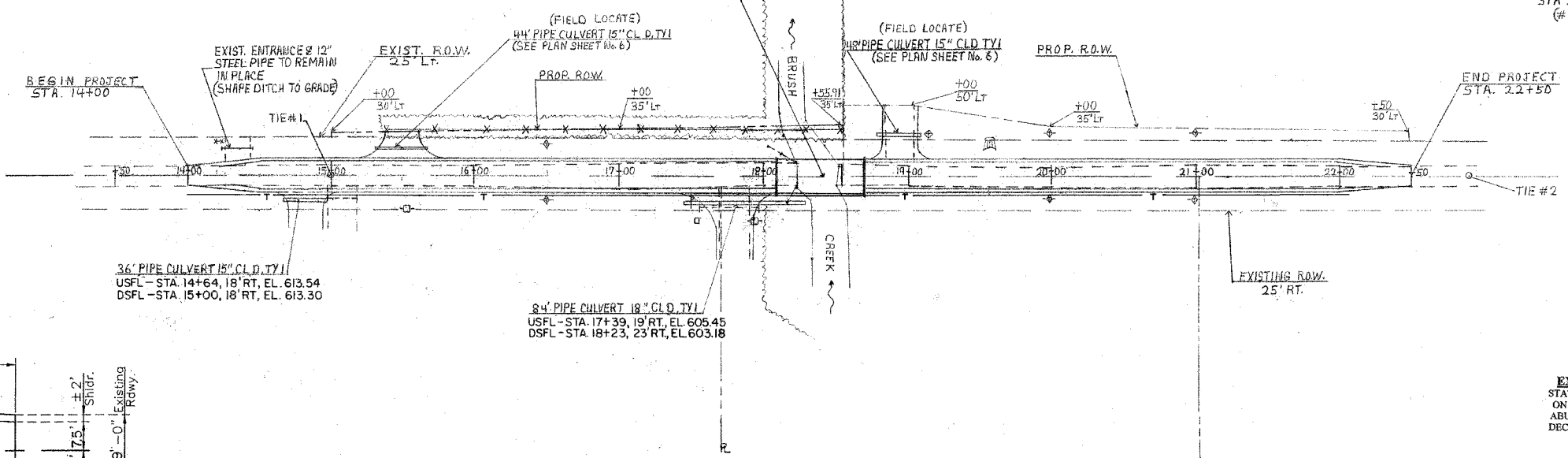


TIE #1
STA 15+00
(# 5 REBAR)



TIE #2
STA 22+90.10
(# 5 REBAR)

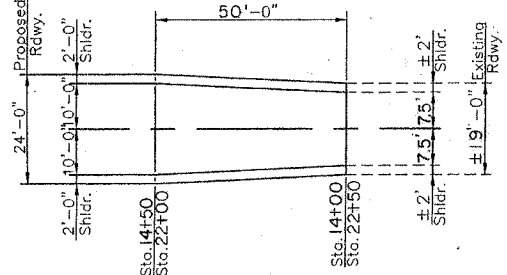
STATION 18+39.50 STANDARD BRIDGE PLANS
SINGLE SPAN 27" P.P.C. DECK BEAM BRIDGE
61' - 6" BK - BK ABUTMENTS, 24' - 0" WIDTH
PILE BENT ABUTMENTS, 0 SKEW
STRUCTURE NO. 087 - 3542



36" PIPE CULVERT 15" CL D. TY I
USFL - STA. 14+64, 18' RT, EL. 613.54
DSFL - STA. 15+00, 18' RT, EL. 613.30

44" PIPE CULVERT 15" CL D. TY I
(FIELD LOCATE)
(SEE PLAN SHEET No. 6)

48" PIPE CULVERT 15" CL D. TY I
(FIELD LOCATE)
(SEE PLAN SHEET No. 6)



ROADWAY TRANSITION DETAIL

GENEVIEVE SCHMIEDERTON
PARCEL NO. 3

JAMES L. WINTER & MAXINE WALL
PARCEL NO. 2

GENEVIEVE SCHMIEDERTON
PARCEL NO. 1

TEMPORARY DITCH CHECKS

STATION	OFFSET	QUANTITY
16+50	Lt.	1.0
16+50	Rt.	1.0
20+00	Lt.	1.0
20+00	Rt.	1.0
21+00	Lt.	1.0
21+00	Rt.	1.0
TOTAL		6.0

INLET AND PIPE PROTECTION

STATION	OFFSET	QUANTITY
19+20	Lt.	1.0

TREE REMOVAL

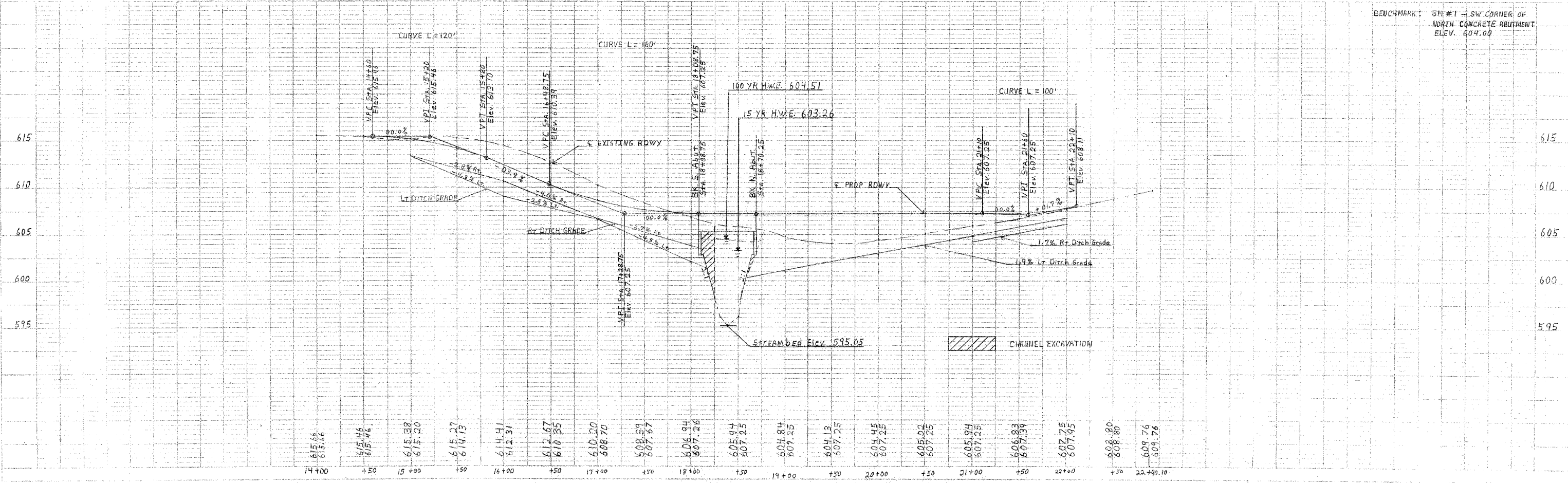
All trees between the Stations listed below and the limits of the proposed R.O.W. shall be removed only as directed by the Engineer

Begin Station 14+00
End Station 22+50
TREE REMOVAL, ACRES = 1.2 acres

UTILITIES

SHELBY ELECTRIC COOPERATIVE
NORTH ROUTE 128
SHELBYVILLE, ILLINOIS 62565
1-217-774-3986
CONSOLIDATED COMMUNICATIONS INC.
121 SOUTH 17TH STREET
MATTOON, ILLINOIS 61938-3915
1-217-235-3311

SEC. 20 TION., R 5E. 3rd P.M.



PROJECT: TR 320
SHEET: 4 OF 15
DATE: 10/15/08
DRAWN BY: J. L. WINTER
CHECKED BY: M. R. JONES
APPROVED BY: J. L. WINTER

PROJECT: TR 320
SHEET: 4 OF 15
DATE: 10/15/08
DRAWN BY: J. L. WINTER
CHECKED BY: M. R. JONES
APPROVED BY: J. L. WINTER