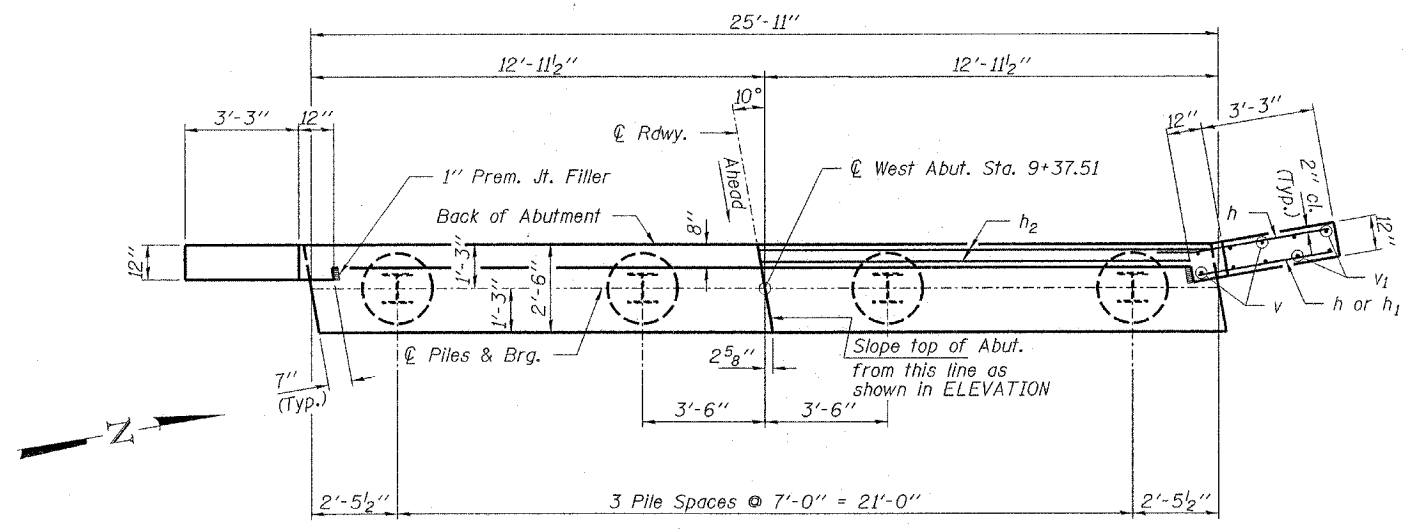
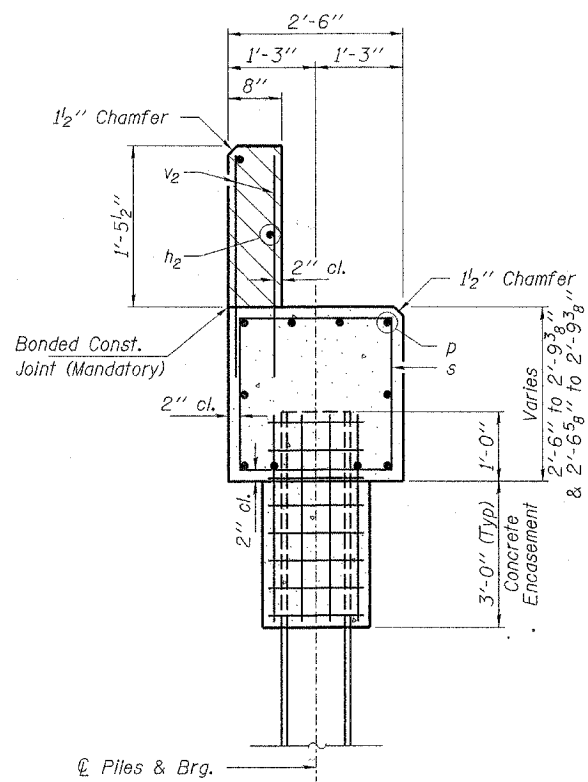


ROUTE NO.	SECTION	COUNTY	TOTAL SHEETS	SHEET NO.
T.R. 367	06-03113-00-BR	SHELBY	16	10
FED. ROAD DIST. NO.	ILLINOIS CONTRACT NO. 95533			

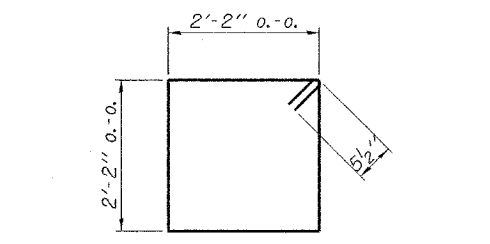


PLAN

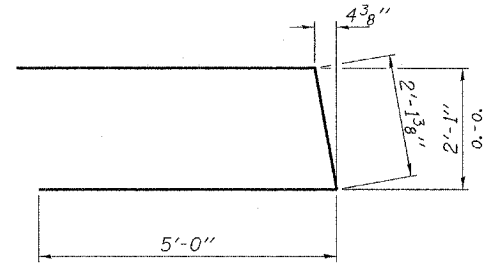


SECTION A-A

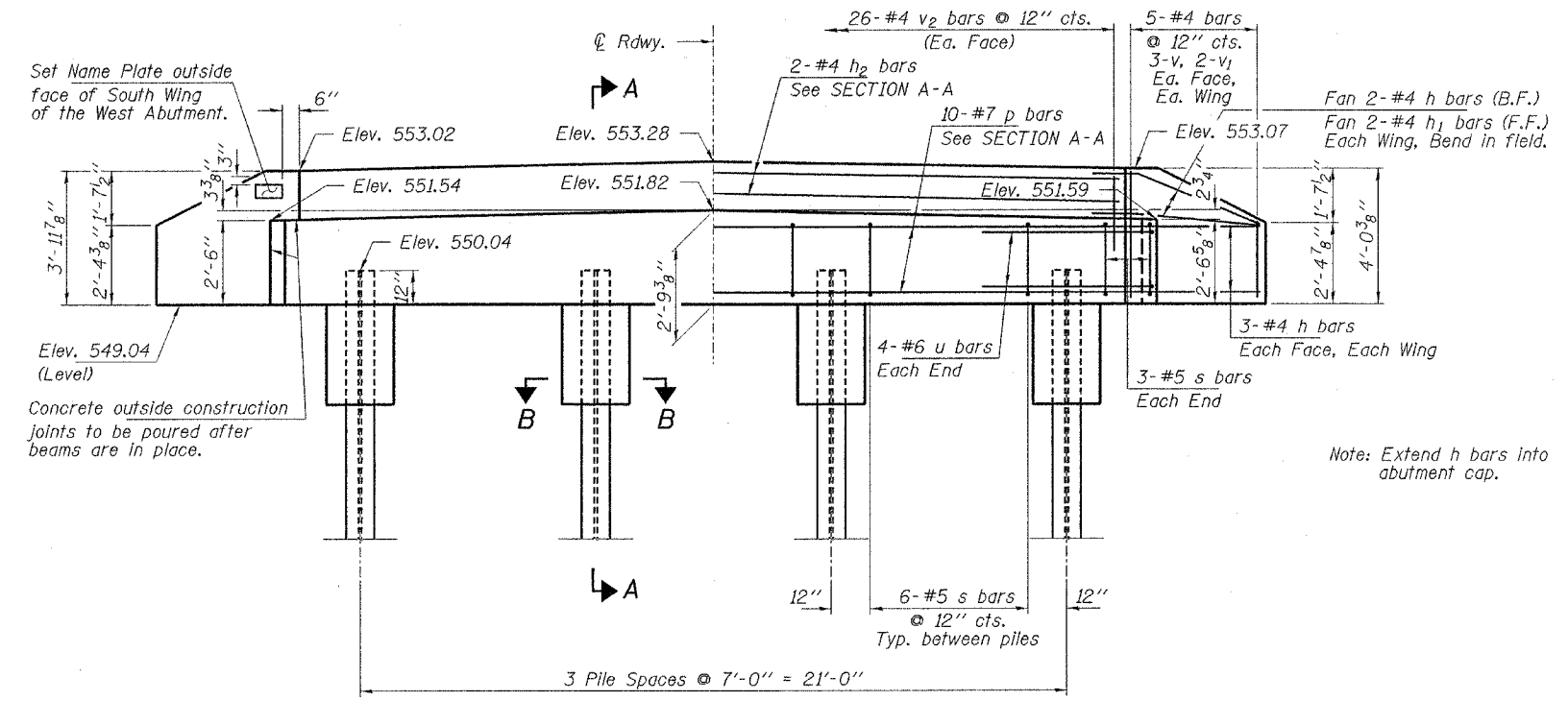
Hatched area to be poured after beams are in place.



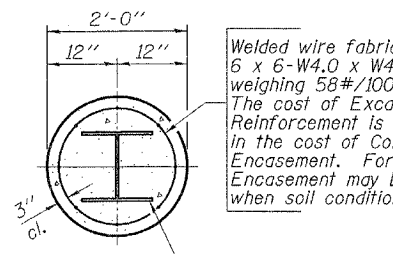
BAR s



BAR u



ELEVATION
(Looking West)



SECTION B-B

BILL OF MATERIAL - W. ABUT.

BAR	NO.	SIZE	LENGTH	SHAPE
h	16	#4	5'-6"	—
h ₁	4	#4	4'-0"	—
h ₂	2	#4	25'-7"	—
p	10	#7	25'-7"	—
s	24	#5	9'-7"	□
u	8	#6	12'-2"	—
v	12	#4	3'-2"	—
v ₁	8	#4	2'-2"	—
v ₂	52	#4	2'-4"	—

Concrete Structures	Cu. Yd.	8.2
Concrete Encasement	Cu. Yd.	1.4
Reinforcement Bars	Pound	1,130
Steel Piles HP10x42	Foot	60
Test Pile Steel HP10x42	Each	1
Name Plates	Each	1

PILE DATA

Type.....Steel HP10x42
 No. Req'd.....*4
 Allowable Resistance Available.....112 Kips/Pile
 Nominal Req'd Bearing.....336 Kips/Pile
 Est. Length.....20 Ft./Pile

Notes: The Steel H-Piles shall be according to ASHTO M270 Grade 50.

The test piles shall be driven to 110 percent of the Nominal Required Bearing indicated in the pile data information.

*Includes one test pile to be driven in a permanent location at the West Abutment.

See Sheet 14 for pile details.

HAMPTON, LENZINI & RENWICK, INC.
 CIVIL & STRUCTURAL ENGINEERS
 LAND SURVEYORS

3085 STEVENSON DRIVE, SUITE 201
 SPRINGFIELD, ILLINOIS 62703
 (217) 546-3400

ELGIN • SPRINGFIELD

PROJECT NUMBER 12-87-0018-1 DATE: 01/23/08
 DESIGNED: R.J.P. CHECKED: S.W.N. DRAWN: D.T.M.

WEST ABUTMENT
SECTION 06-03113-00-BR
CLARKSBURG ROAD DISTRICT
SHELBY COUNTY
STRUCTURE NO. 087-3561 / STATION 10+00