

STATE OF ILLINOIS  
 DEPARTMENT OF TRANSPORTATION  
 DIVISION OF HIGHWAYS  
 PLANS FOR PROPOSED  
 FEDERAL-AID HIGHWAY BRIDGE PROGRAM

LAWRENCE COUNTY  
 SECTION 05-08133-00-BR  
 PETTY ROAD DISTRICT  
 STRUCTURE NO. 051-3280  
 PROJECT NO. BROS-101(027)  
 JOB NO. C-97-062-08

TR 32

INDEX OF SHEETS

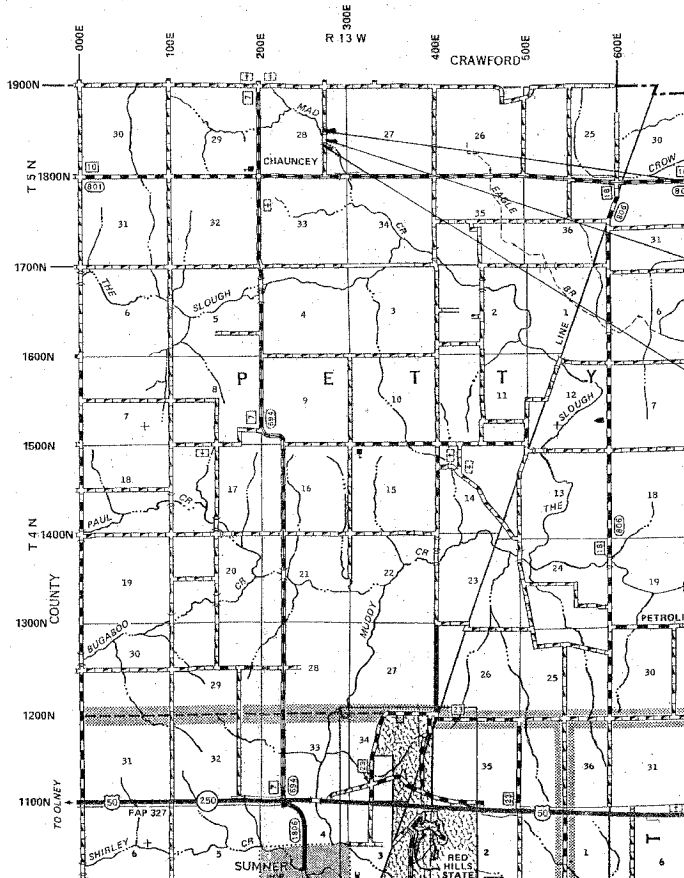
- 1 COVER SHEET
- 2 PLAN & PROFILE
- 3 CROSS SECTIONS
- 4-10 BRIDGE PLANS

STANDARDS: 280001-04 - EROSION CONTROL  
 (SEE PROPOSAL) 701901 - TRAFFIC  
 BLR 21-7 - TRAFFIC  
 BLR 22-5 - TRAFFIC

SUMMARY OF QUANTITIES

QTY	UNIT	ITEM	CODE NO
408	CU YD	EARTH EXCAVATION	20200100
169	CU YD	CHANNEL EXCAVATION	20300100
1105	CU YD	FURNISHED EXCAVATION	20400800
0.50	ACRE	SEEDING, CLASS 2 (SPECIAL)	25001000
4	EACH	TEMPORARY DITCH CHECKS	28000300
60	FOOT	PERIMETER EROSION BARRIER	28000400
110	TON	STONE DUMPED RIPRAP, CLASS A4	28100807
48	TON	STONE RIPRAP DITCH	28102600
1	EACH	REMOVAL OF EXISTING STRUCTURES	50100100
22.2	CU YD	CONCRETE STRUCTURES	50300225
2.6	CU YD	CONCRETE ENCASEMENT	50300280
1680	SQ FT	PRECAST PRESTRESSED CONCRETE DECK BEAMS (27" DEPTH)	50400505
2680	POUND	REINFORCEMENT BARS	50800105
120	FOOT	STEEL RAILING, TYPE S1	50900205
234	FOOT	FURNISHING STEEL PILES HP 10X42	51201400
234	FOOT	DRIVING PILES	51202305
1	EACH	TEST PILE STEEL HP 10X42	51203400
1	EACH	NAME PLATES	51500100
36	FOOT	PIPE CULVERTS, CLASS D, TYPE 1 15"	542D0220
36	FOOT	PIPE CULVERTS, CLASS D, TYPE 1 18"	542D0223
1	L.SUM	MOBILIZATION	67100100
1	L.SUM	TRAFFIC CONTROL AND PROTECTION	70101700
296	TON	AGGREGATE SURFACE COURSE, TYPE B (CA-6)	XX003658
168	TON	AGGREGATE SURFACE COURSE, TYPE B (CA-9)	XX003659

SCALES  
 PLAN 1 INCH = 50 FEET  
 PROFILE HORZ. 1 INCH = 50 FEET  
 PROFILE VERT. 1 INCH = 10 FEET  
 CROSS SECTION 1 INCH = 5 FEET



SECTION 05-08133-00-BR  
 END STA. 7+50

STA. 4+00 - STANDARD BRIDGE DESIGN  
 PROPOSED PRECAST PRESTRESSED CONCRETE DECK  
 BEAM BRIDGE. 1 SPAN @ 60'. 28' ROWY., SKEW = 20' LF  
 EXISTING STR. NO. 051-3052  
 PROPOSED STR. NO. 051-3280

SECTION 05-08133-00-BR  
 BEGINS STA. 0+50

FUNCTIONAL CLASS: RURAL LOCAL ROAD  
 ADT = 75  
 DESIGN SPEED = 30 MPH

CONTRACT NO. 95546

TOLL FREE JOINT UTILITY LOCATING  
 INFORMATION FOR EXCAVATORS (J.U.L.I.E.)  
 TELEPHONE NO. 1-800-892-0123

PROFESSIONAL DESIGN FIRM #184-000832

LOCATION MAP

APPROXIMATE SCALE: 1 INCH = 1 MILE  
 NET LENGTH = 700 L.F. = 0.133 MILES

*John A. Stone*  
 ILLINOIS REGISTERED PROFESSIONAL ENGINEER # 55012  
 LICENSE EXPIRES NOVEMBER 30, 2009

APPROVED 2-25 . 2008

LOCAL AGENCY REPRESENTATIVE

PASSED 4-1 . 2008

*Maurice Elwood*  
 DISTRICT SEVEN ENGINEER  
 OF LOCAL ROADS & STREETS

RELEASING FOR BID BASED ON LIMITED REVIEW

4-1 . 2008

*Christina R. Keenan*  
 DEPUTY DIRECTOR OF HIGHWAYS  
 REGION FOUR ENGINEER  
 STATE OF ILLINOIS  
 DEPARTMENT OF TRANSPORTATION