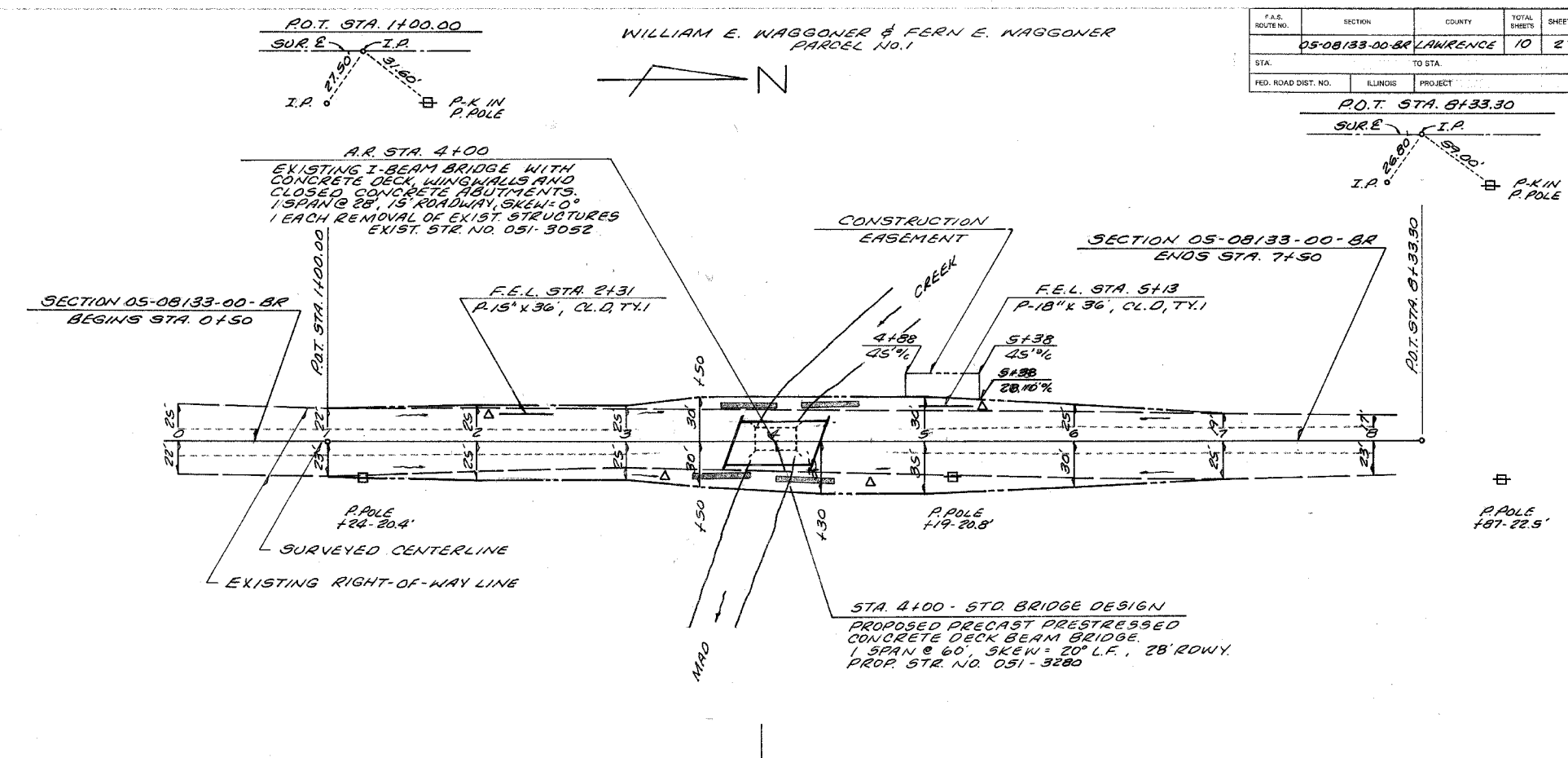
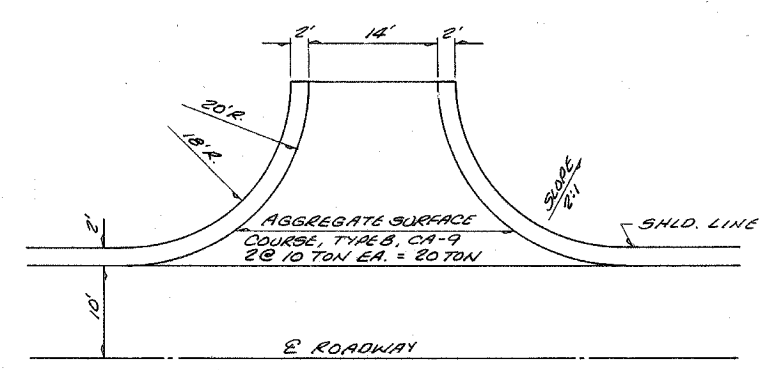
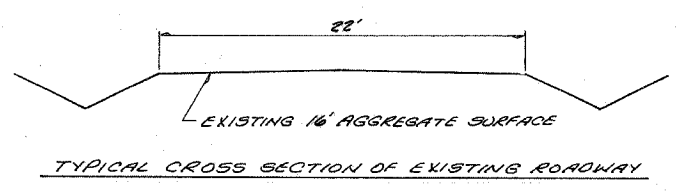
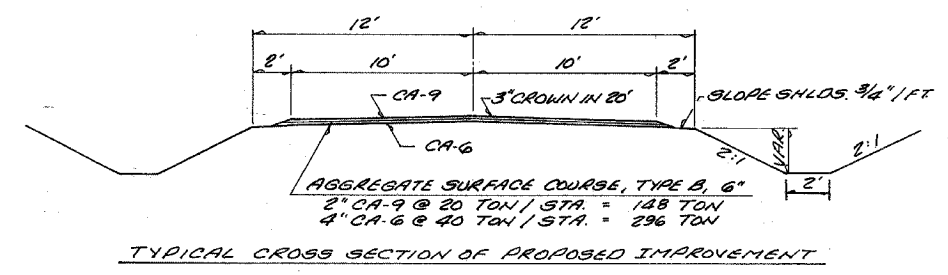


F.A.S. ROUTE NO.	SECTION	COUNTY	TOTAL SHEETS	SHEET
05-08133-00-BR	LAWRENCE		10	2
STA.	TO STA.			
	P.O.T. STA. 8133.30			
FED. ROAD DIST. NO.	ILLINOIS	PROJECT		



PLANNED BY: [blank]  
 DESIGNED BY: [blank]  
 CHECKED BY: [blank]  
 DATE: [blank]

PLANNED BY: [blank]  
 DESIGNED BY: [blank]  
 CHECKED BY: [blank]  
 DATE: [blank]

TEMPORARY DITCH CHECKS

LT. STA. 2+05 = 1 EACH
RT. STA. 3+25 = 1 EACH
RT. STA. 4+65 = 1 EACH
LT. STA. 5+40 = 1 EACH
TOTAL = 4 EACH

PERIMETER EROSION BARRIER  
 15' @ EACH COR. OF BRIDGE ON TOE OF CHANNEL SLOPE = 60 FEET

B.M. #1 ELEV. 449.21  
 NAIL IN POWER POLE  
 20.4' RT. STA. 1+24

STONE RIPRAP DITCH

LT. STA. 3+62 TO STA. 4+02 = 12 TON
RT. STA. 3+25 TO STA. 3+85 = 12 TON
LT. STA. 4+15 TO STA. 4+55 = 12 TON
RT. STA. 4+00 TO STA. 4+40 = 12 TON
TOTAL = 48 TON

EARTHWORK SCHEDULE

EARTH EXCAVATION =	408	CU. YD.
EARTH EXCAVATION ADJUSTED 25% =	306	CU. YD.
CHANNEL EXCAVATION =	169	CU. YD.
CHANNEL EXCAVATION ADJUSTED 25% =	127	CU. YD.
EMBANKMENT =	1588	CU. YD.
FURNISHED EXCAVATION =	1105	CU. YD.

CONSTRUCT TRANSITIONS

FROM EXIST. ROW TO PROP. 28' ROW	STA. 0+00 TO STA. 0+50
STA. 7+50 TO STA. 8+00	STA. 7+50 TO STA. 8+00
FROM PROP. 28' ROW TO PROP. 28' ROW	STA. 3+25 TO STA. 3+75
STA. 4+25 TO STA. 4+75	STA. 4+25 TO STA. 4+75
QUANTITIES INCLUDED IN THOSE LISTED	
SEEDING, CLASS 2 (SPECIAL)	STA. 0+00 TO STA. 8+00 = 0.5 ACRES

UTILITIES  
 ELECTRIC: HARRIS ELECTRIC CO.-OP.  
 8543 N. STATE HWY. 130  
 NEWTON, IL. 62448  
 PH. 618-783-8765

