

INDEX OF SHEETS

SHEET NO.	DESCRIPTION
1	TITLE SHEET & SUMMARY OF QUANTITIES
2	PLAN & PROFILE, TYPICAL SECTIONS, GENERAL NOTES & CURLED END SECTIONS
3-12	BRIDGE DESIGN

STANDARDS

000001-05	STANDARD SYMBOLS, ABBREVIATIONS & PATTERNS (6 SHEETS)
280001-04	TEMPORARY EROSION CONTROL SYSTEMS (2 SHEETS)
701901	TRAFFIC CONTROL DEVICES
B.L.R. 21-7	TYPICAL APPLICATION OF TRAFFIC CONTROL DEVICES FOR CONSTRUCTION ON RURAL LOCAL HIGHWAYS
B.L.R. 22-5	TYPICAL APPLICATION OF TRAFFIC CONTROL DEVICES FOR CONSTRUCTION ON RURAL LOCAL HIGHWAYS (TWO-LANE TWO-WAY RURAL TRAFFIC) (ROAD CLOSED TO THRU TRAFFIC)

SUMMARY OF QUANTITIES

QUANTITY	UNIT	ITEM	CODE NO.
142.00	CU YD	CHANNEL EXCAVATION	20300100
19.00	TON	AGGREGATE (EROSION CONTROL)	28001000
230.00	TON	STONE DUMPED RIPRAP, CLASS A4	28100807
50.00	TON	AGGREGATE SURFACE COURSE, TYPE B	40200800
1.00	EACH	REMOVAL OF EXISTING STRUCTURES	50100100
31.40	CU YD	CONCRETE STRUCTURES	50300225
11.40	CU YD	CONCRETE ENCASEMENT	50300280
1920.00	SQ. FT.	PRECAST PRESTRESSED CONCRETE DECK BEAMS (17" DEPTH)	50400305
32.00	EACH	STUD SHEAR CONNECTORS	50500505
4080.00	POUND	REINFORCEMENT BARS	50800105
160.00	FOOT	STEEL RAILING, TYPE S1	50900205
808.00	FOOT	FURNISHING STEEL PILES HP10X42	51201400
808.00	FOOT	DRIVING PILES	51202305
1.00	EACH	NAME PLATES	51500100
1.00	L. SUM	MOBILIZATION	67100100



DESIGN DESIGNATION:
DESIGN SPEED: 30 MPH
HIGHWAY CLASS - LOCAL ROAD
EXISTING STRUCTURE NO.: 024-3086
PROPOSED STRUCTURE NO.: 024-3135
CURRENT A.D.T. = 125
CONTRACT NO. 95547

J.U.L.I.E.
JOINT UTILITY LOCATION INFORMATION FOR EXCAVATION
1-800-892-0123

STATE OF ILLINOIS

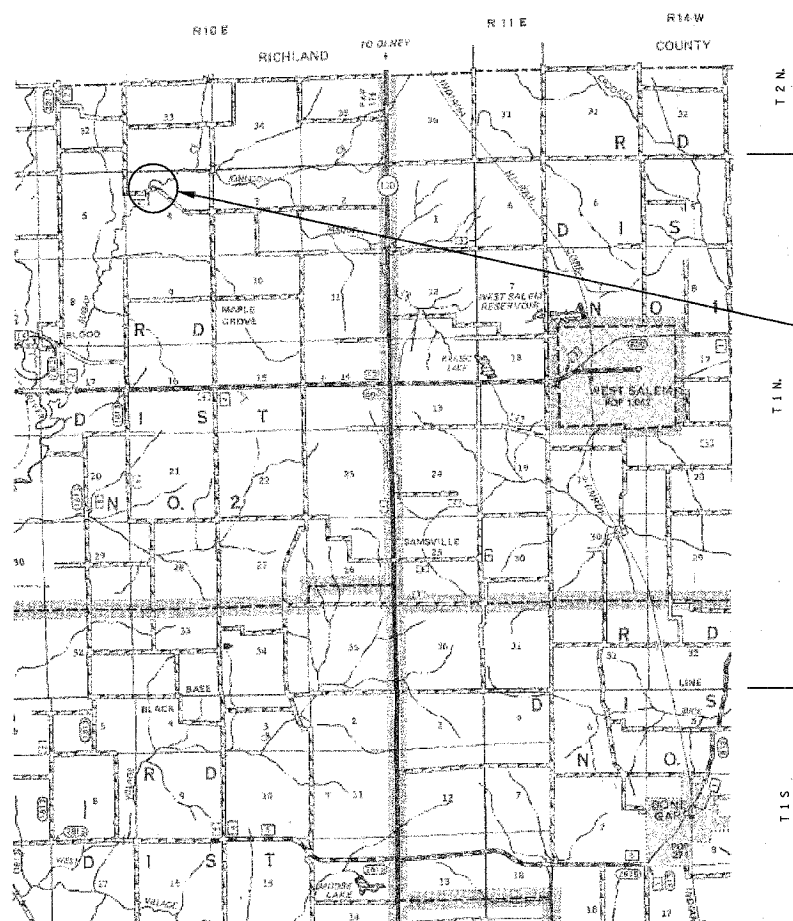
DEPARTMENT OF TRANSPORTATION

**PLANS FOR PROPOSED
FEDERAL AID - H.B.P. PROJECT**

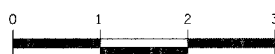
T.R. 31 EDWARDS COUNTY SECTION 06-02116-00-BR

PROJECT NO. BROS-047(030) JOB NO. C-97-064-08

CONTRACT #95547 SUGAR CREEK



LAYOUT
APPROXIMATE SCALE 1 INCH = 1 MILE



GROSS LENGTH	90.00 FT	0.017 MILES
OMISSIONS	0.00 FT	0.00 MILES
NET LENGTH	90.00 FT	0.017 MILES

PLAN	1" = 50'	
PROFILE	1" = 50'	
PROFILE VERT.	1" = 5'	

SECTION 06-02116-00-BR
BEGINS STATION 4+55

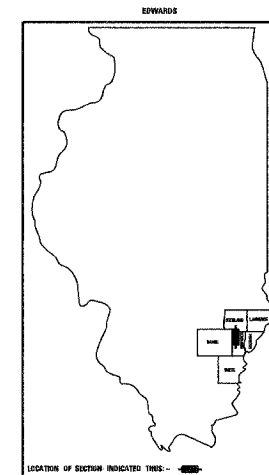
STATION 5+00, STRUCTURE NO. 024-3135
A 80' TRIPLE SPAN (36', 30', 25') PRECAST
PRESTRESSED CONCRETE DECK BEAM BRIDGE
(17" DEPTH), 24' ROADWAY, 2.77% GRADE,
0° SKEW.

SECTION 06-02116-00-BR
ENDS STATION 5+45

APPROVED	<i>March 17th</i>	20 08
	<i>[Signature]</i>	COUNTY ENGINEER
PASSED	<i>3/31</i>	20 08
	<i>[Signature]</i>	DISTRICT SEVEN ENGINEER OF LOCAL ROADS & STREETS
Releasing For Bid Based on Limited Review	<i>3/31</i>	20 08
	<i>[Signature]</i>	DEPUTY DIRECTOR OF HIGHWAYS, REGION FOUR ENGINEER
STATE OF ILLINOIS DEPARTMENT OF TRANSPORTATION		

T.R.	SECTION	COUNTY	TOTAL SHEETS	SHEET NO.
31	06-02116-00-BR	EDWARDS	12	1

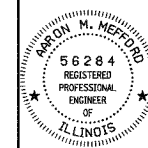
323 W. 3RD ST.
P.O. BOX 160
MT. CARMEL, IL
62863
PHONE:
(618)-262-8651
(618)-263-3327



405 W. STATE ST.
SUITE 1
FRANCETON, IN
47670
PHONE:
(812)-386-7611
FAX:
(812)-385-2612



PROFESSIONAL
DESIGN FIRM
LAND SURVEY &
PROFESSIONAL
ENGINEERING
CORPORATION
184-000887
(62-032436)(35-002769)



AARON M. MEFFORD
NAME
[Signature]
SIGNATURE
DATE
3-17-08
11-30-09
EXPIRES

TOWNSHIP ROUTE 31
OVER SUGAR CREEK
EDWARDS COUNTY, ILLINOIS

SHEET TITLE:	
TITLE SHEET	
SCALE:	VIRES
BY:	AMM
DATE:	3/18
REV:	
1	OF 12
SHEETS	
SHEET NO.	
1	