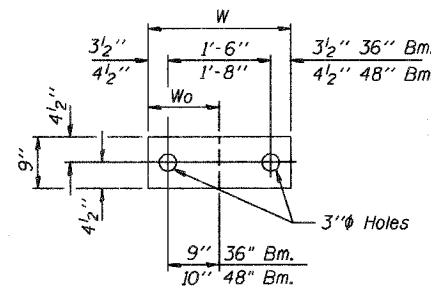
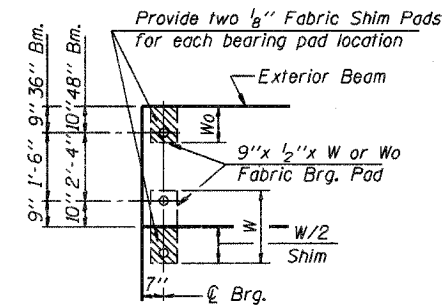
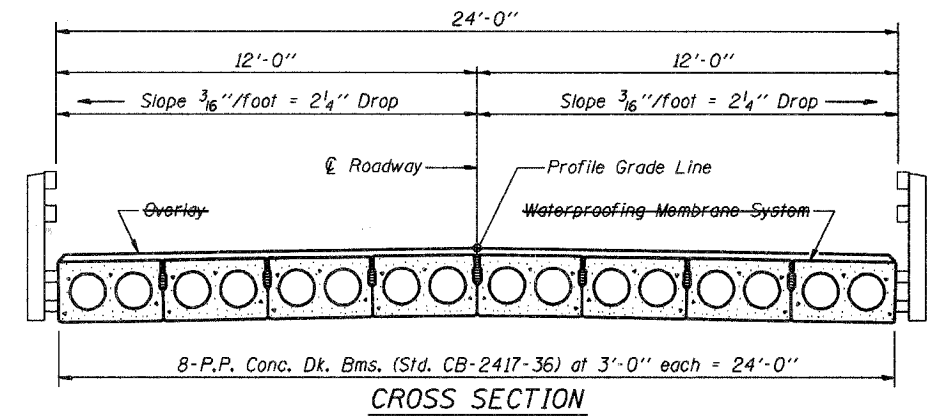


TYPICAL ELEVATIONS

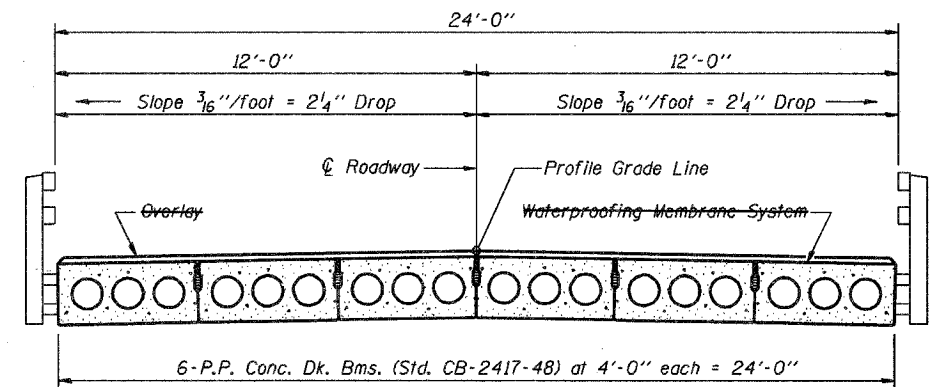


Beam	W	Wo
36"	2'-1"	1'-0 1/2"
48"	2'-5"	1'-2 1/2"

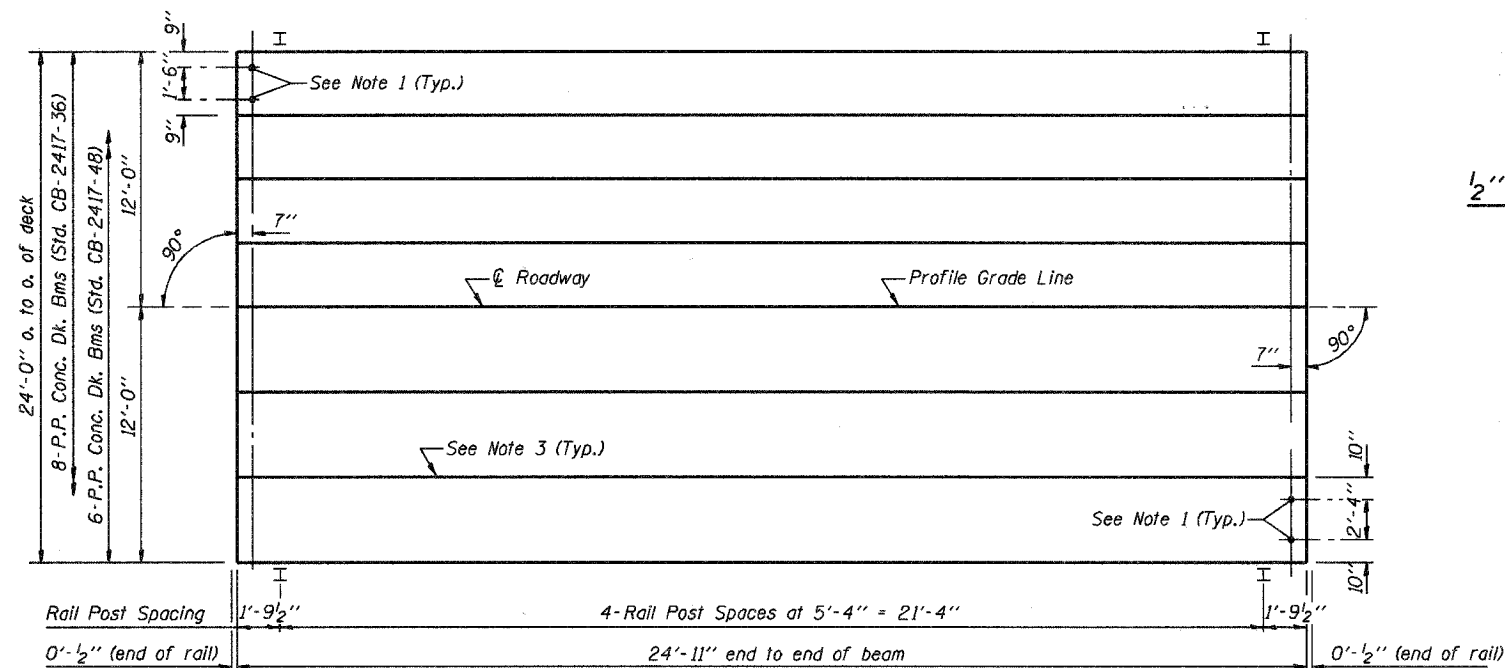
1/2" FABRIC BRG. PAD DETAILS



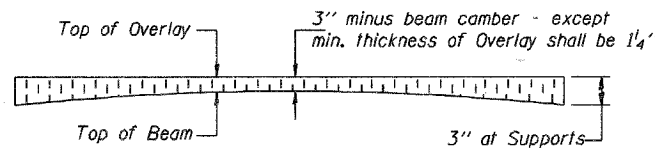
CROSS SECTION



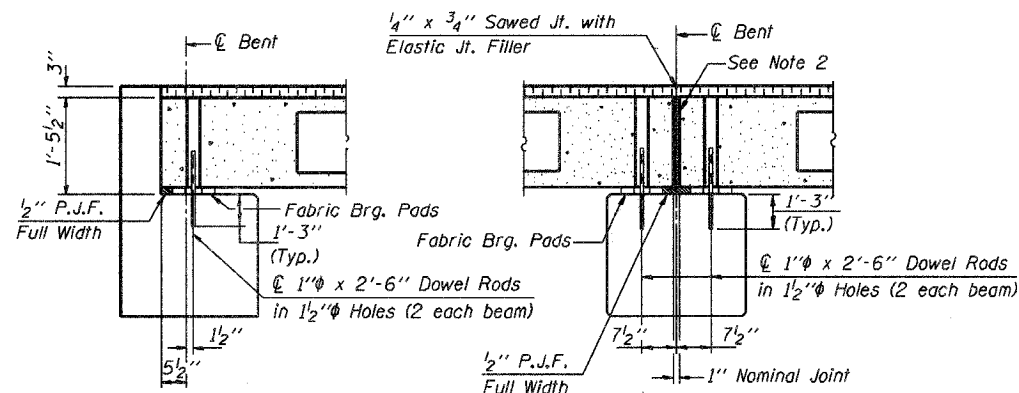
CROSS SECTION



PLAN



PROFILE OF OVERLAY



SECTION AT ABUTS.
(Along C Beams)

SECTION AT PIERS
(Along C Beams)

NOTES

- After beams have been erected, holes shall be drilled into substructure and anchor dowels placed. Dowel holes shall be filled with non-shrink grout to top of beam and allowed to cure min. 24 hrs. prior to grouting the shear keys.
- Nominal 1" joint at C Pier shall be filled with non-shrink grout.
- Longitudinal keys shall be grouted.

QUANTITIES FOR ONE SPAN

P.P. Conc. Dk. Bm. 17" Dp.	600 Sq. Ft.
Steel Railing	50 Ft.
Waterproofing Membrane System	66.7 Sq. Yds.
Portland Cement Mortar	175 Ft. ³
Fairing Course	125 Ft. ³

Note: Quantity of overlay for one span = 10.5 Tons

P.P.C. DECK BEAM
SUPERSTRUCTURE

24' RDWY.	17" BMS.	25' SPAN	0° SKEW
STANDARD CS-2417-25			

Illinois Department of Transportation

PASSED APRIL 4, 2005

Theresa J. (Suzanne) ...
Engineer of Bridge Design

APPROVED APRIL 4, 2005

Ralph E. ...
Engineer of Bridges and Structures