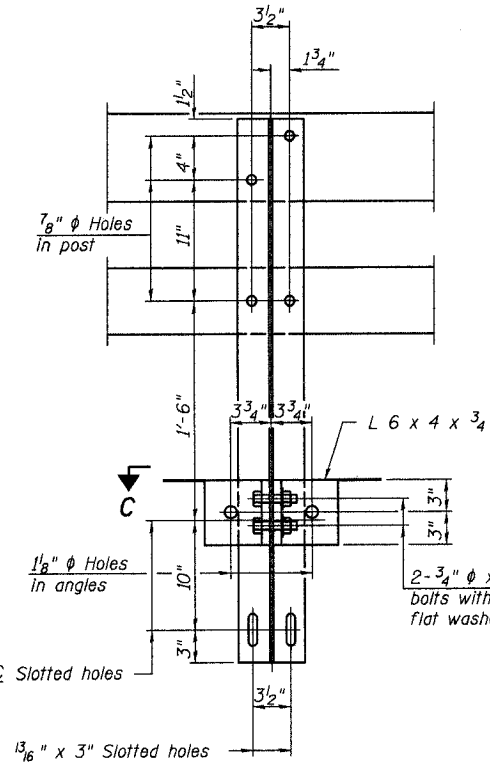
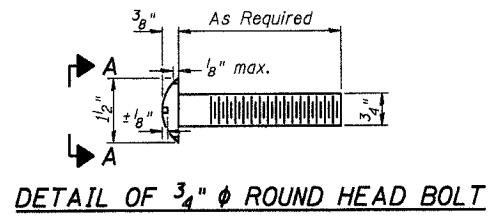
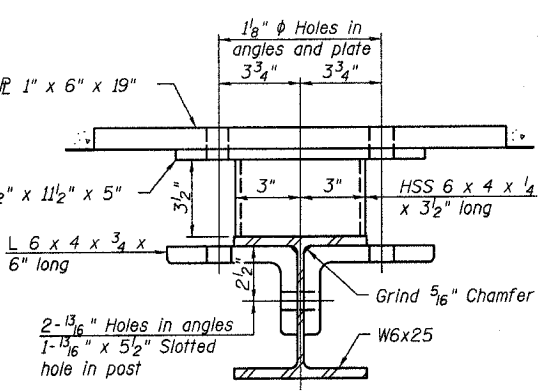


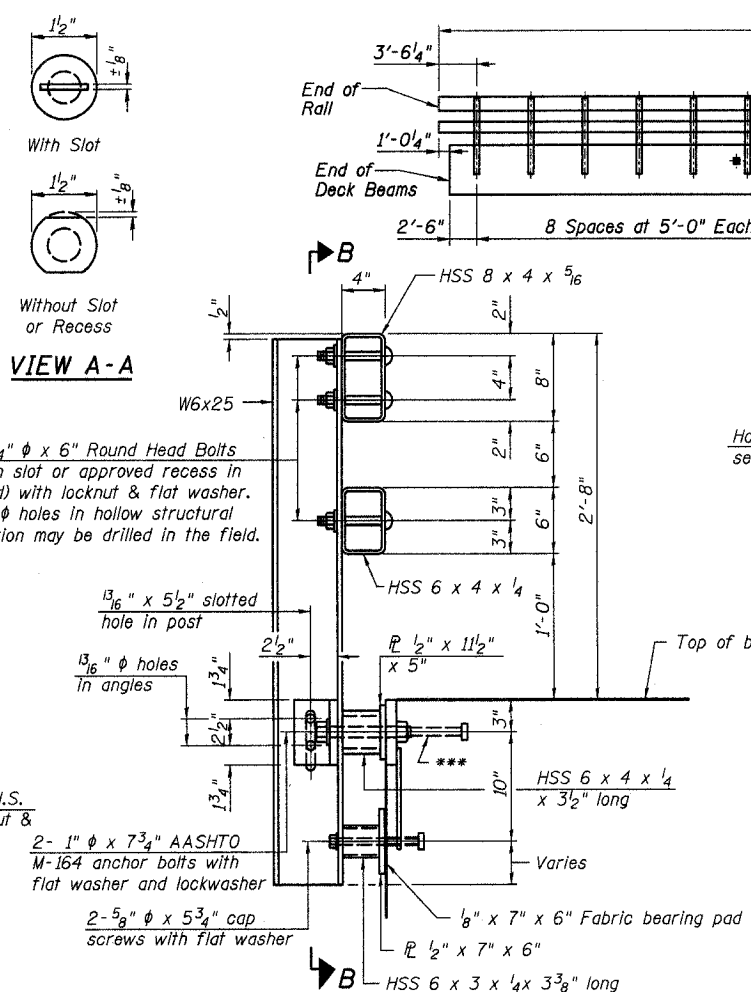
ROUTE	SECTION	COUNTY	TOTAL SHEETS	SHEET NO.
TR 175A	07-03123-00-BR	CRAWFORD	11	9
		ILLINOIS	FED. AID PROJECT	
CONTRACT NO. 95556				



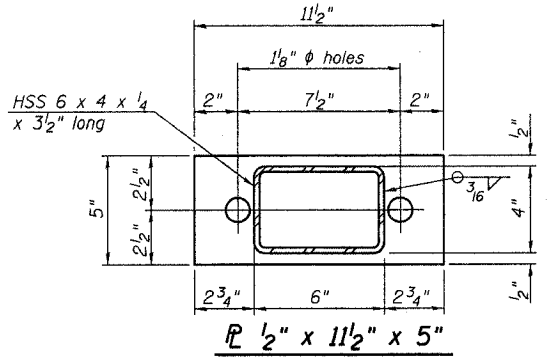
SECTION B-B



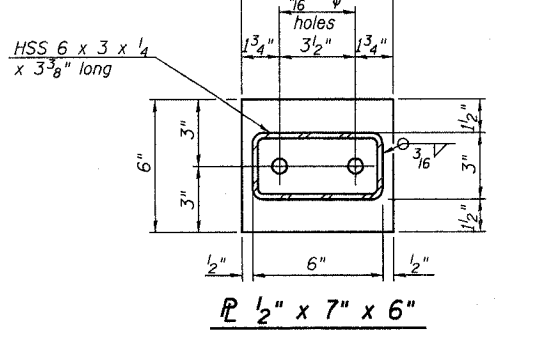
SECTION C-C



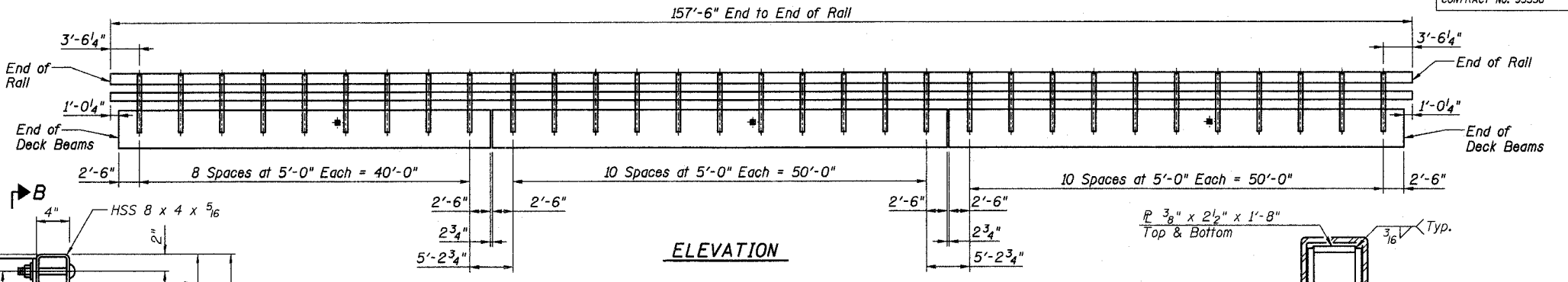
SECTION AT RAIL POST



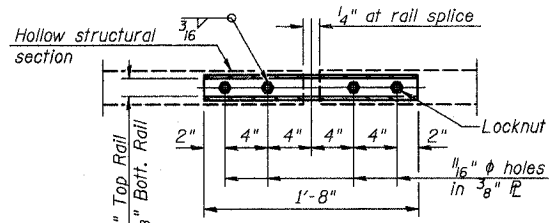
SECTION AT RAIL SPLICER



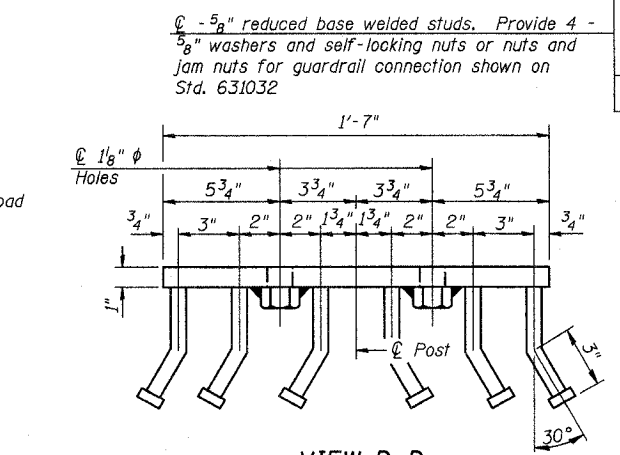
SECTION AT RAIL SPLICER



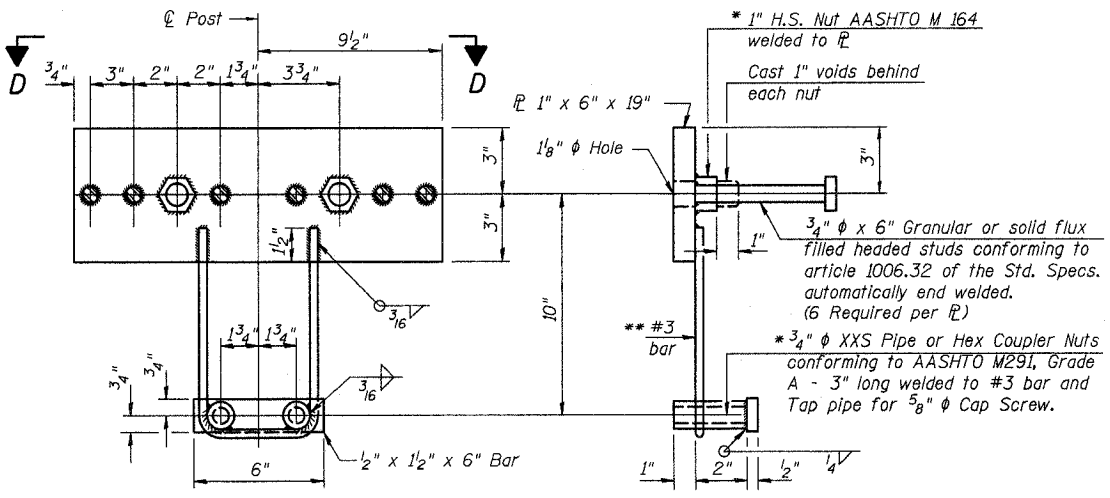
ELEVATION



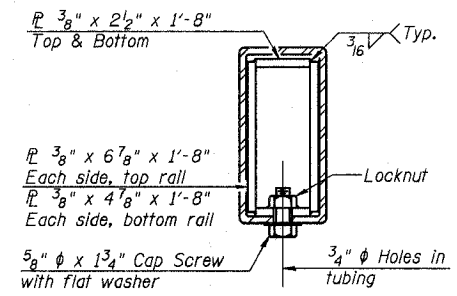
PLAN-BOTT. SPLICE TYPICAL



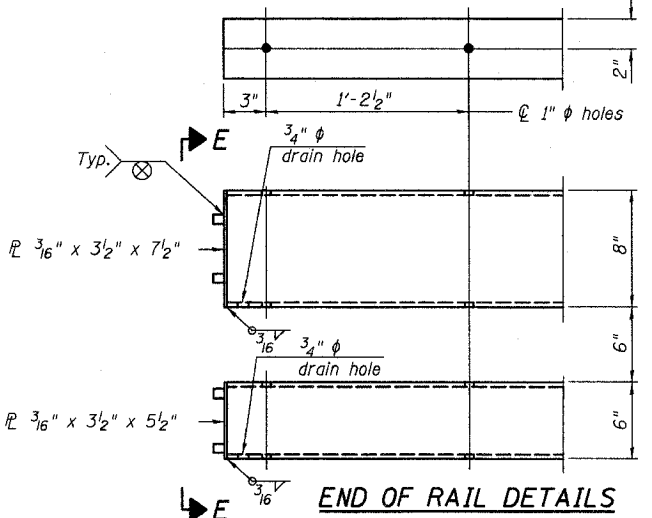
VIEW D-D



ANCHOR DEVICE



SECTION AT RAIL SPLICE



END OF RAIL DETAILS

Notes:
 All field drilled holes shall be coated with an approved zinc rich paint before erection.
 For multi-span bridges, sufficient 1/4" x 6" x 1'-2" galvanized steel shims shall be provided to align rail between adjacent spans. Cost included with Steel Bridge Rail, Type SM.
 All steel rail members shall be galvanized according to Article 509.05 of the Standard Specifications.
 *** The studs of the anchor devices shall be placed below the top reinforcement bars and the outermost longitudinal reinforcement bar shall be placed directly above the studs of the rail post anchor device.

BILL OF MATERIAL

Item	Unit	Quantity
Steel Railing, Type SM	Foot	315

STEEL RAILING, TYPE SM DETAILS
 PROPOSED BRIDGE OVER
 LAMOTTE CREEK
 TR 175A
 SECTION 07-03123-00-BR
 CRAWFORD COUNTY, ILLINOIS

Sheet
 9
 of 11
 Job No. 51107

* Threaded areas shall be plugged or blocked off during casting of beam. Galvanized after fabrication.
 ** Whenever the lower insert assemblies interfere with strand locations, the #3 bars shall be cut and adjusted in order to allow raising or lowering of the lower inserts. Maximum adjustment not to exceed 1/2".

04/04/2008