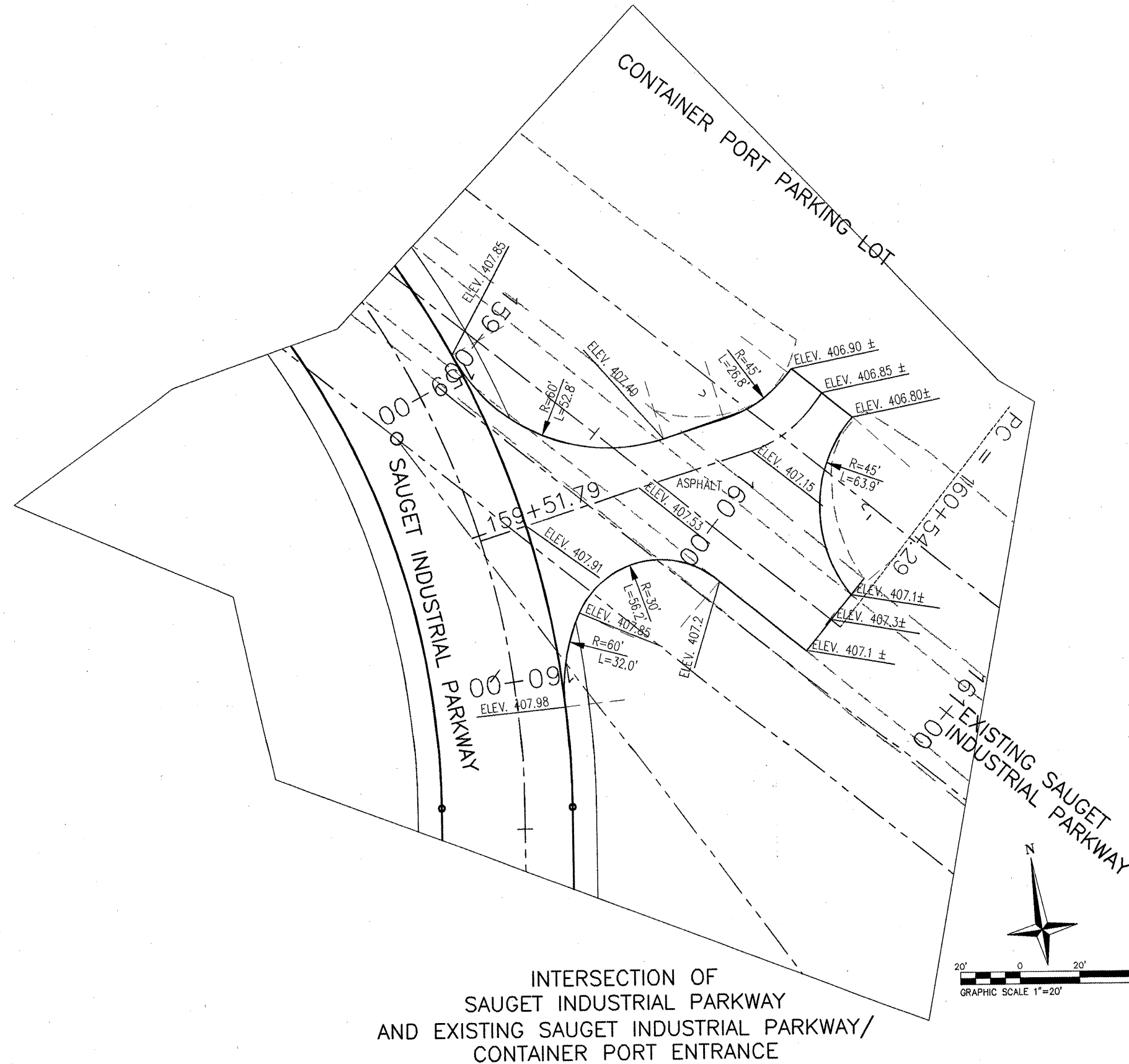


ROUTE NO.	SECTION	COUNTY	TOTAL SHEETS	SHEET NO.
-	99-00009 -01-FP	ST. CLAIR	89	32
FED. ROAD DIST. NO. 8 ILLINOIS FED. AID PROJECT-				
INTERSECTION TRANSITIONS				
CONTRACT NO. 97312				

NOTES:

- CONTRACTOR SHALL ENSURE POSITIVE DRAINAGE OFF OF PAVEMENT THROUGH INTERSECTION. ENGINEER SHALL APPROVE ALL GRADES PRIOR TO PLACEMENT OF ASPHALT.
- ALL ASPHALT SHOULDERS SHALL SLOPE AWAY FROM EDGE OF PROPOSED PAVEMENT. SEE TYPICAL SECTIONS FOR SHOULDER SLOPES.



INTERSECTION OF
SAUGET INDUSTRIAL PARKWAY
AND EXISTING SAUGET INDUSTRIAL PARKWAY/
CONTAINER PORT ENTRANCE

