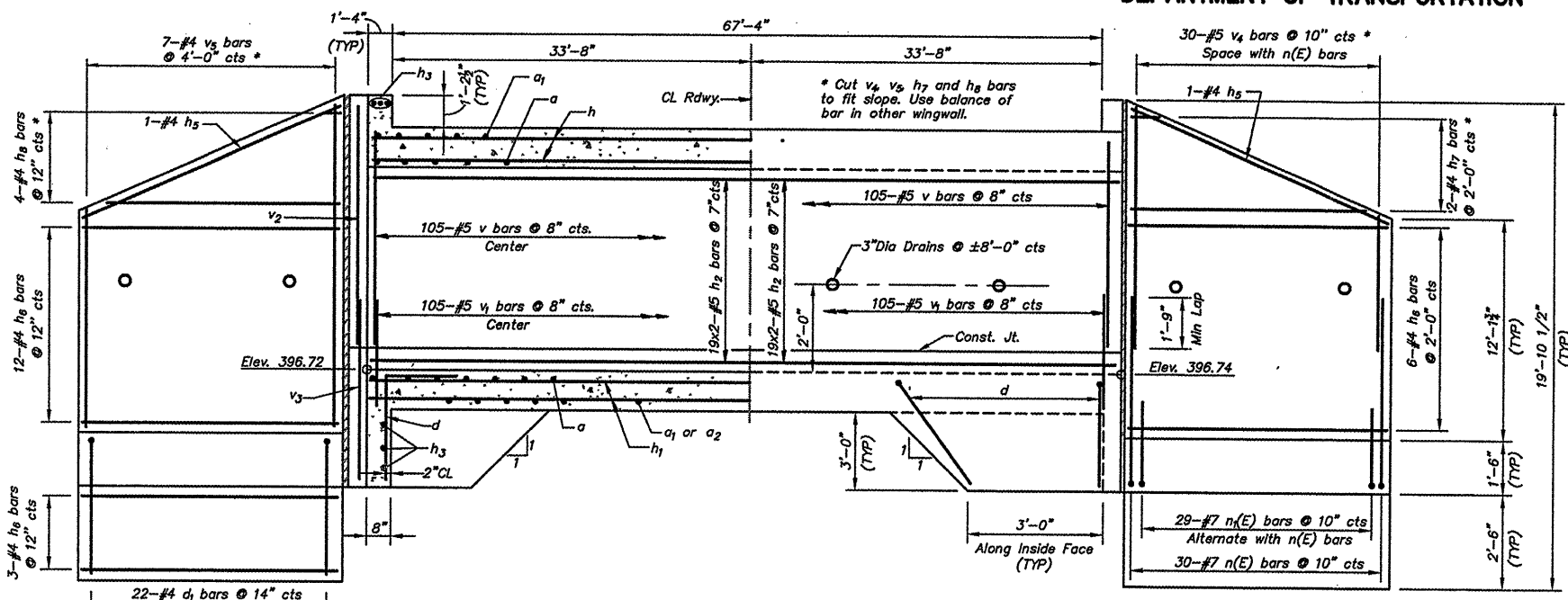
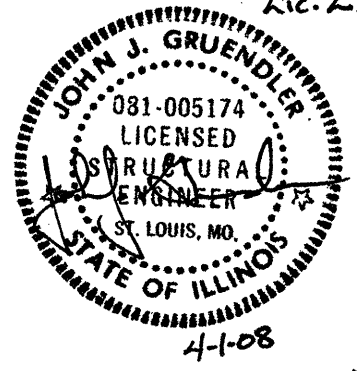


ROUTE NO.	SECTION	COUNTY	TOTAL SHEETS	SHEET NO.
-	99-00009 -01-FP	ST. CLAIR		72
FED. ROAD DIST. NO. 8 ILLINOIS			FED. AID PROJECT- 98-089-97	
CULVERT STRUCTURAL				

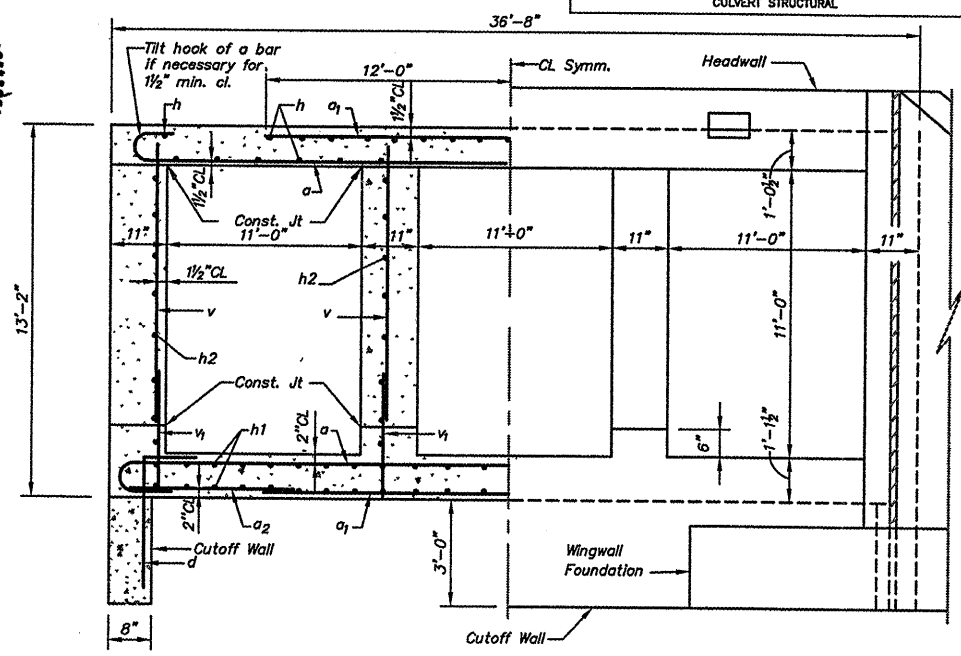


**REINFORCEMENT FRONT FACE**  
(Elevation View Shown)

**HALF LONG. SECTION**  
(Showing Bars in Interior Wall)

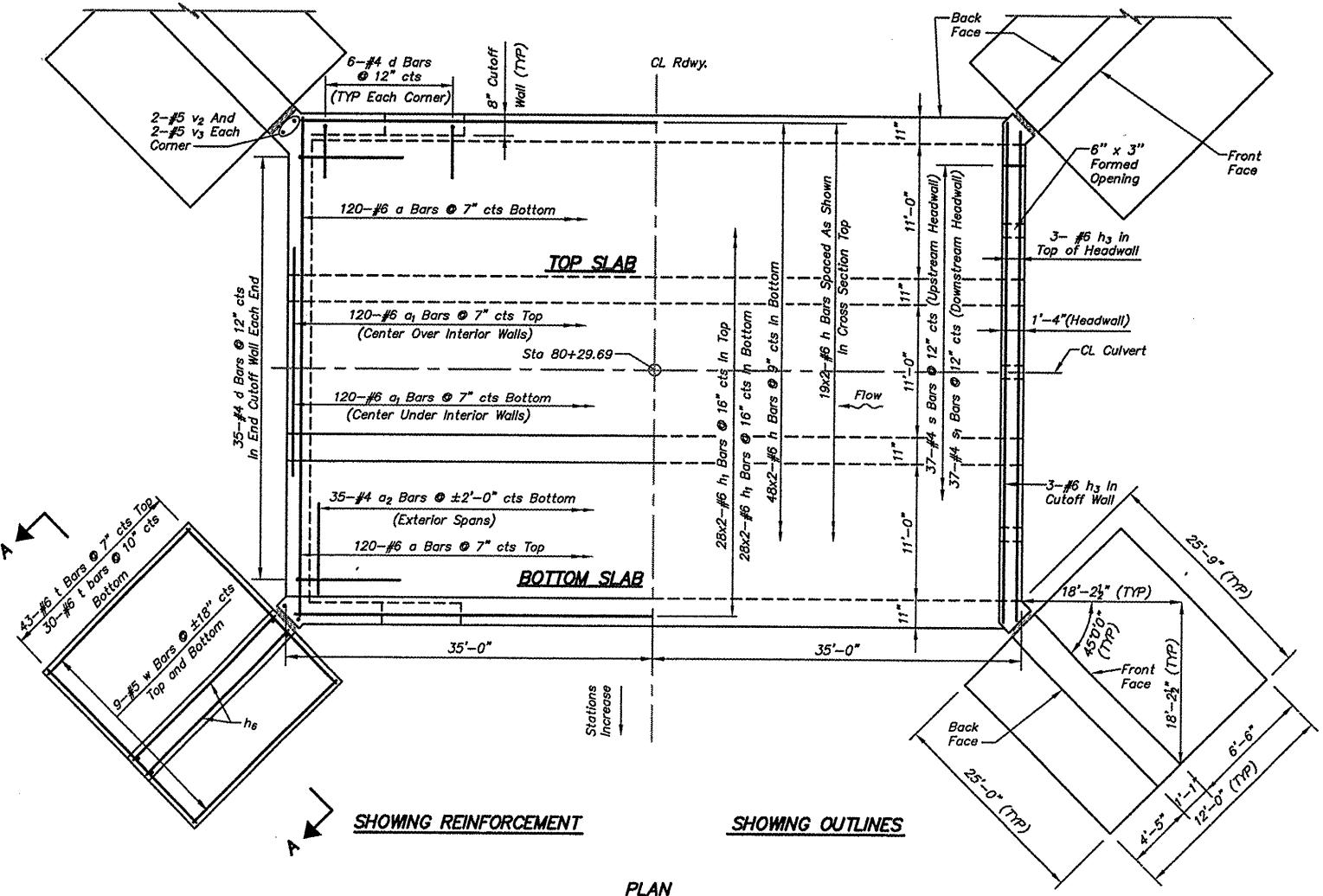
**HALF ELEVATION**  
(Showing Bars in Outside Wall)

**REINFORCEMENT BACK FACE**  
(Elevation View Shown)



**HALF SECTION THRU BARREL**

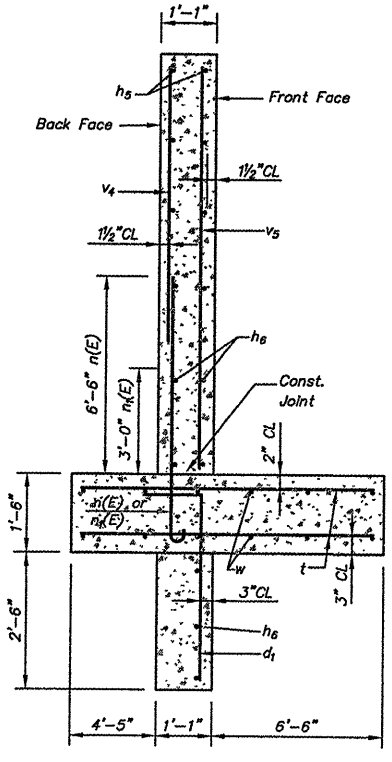
**HALF END ELEVATION**



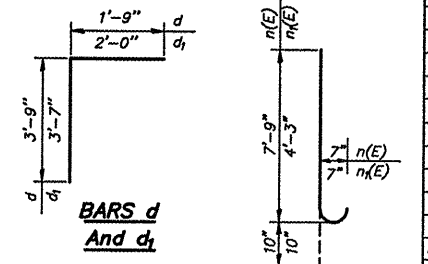
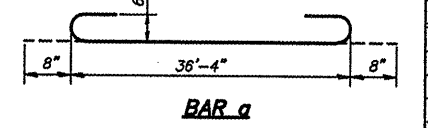
**SHOWING REINFORCEMENT**

**SHOWING OUTLINES**

**PLAN**



**SECTION A-A**

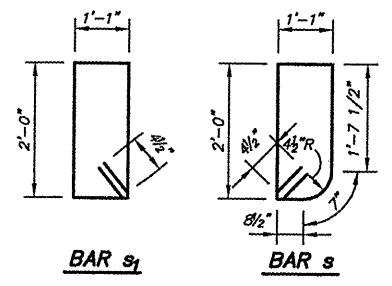


**BARS n(E) and n(E)**

Notes:  
Reinforcement bars designated (E) shall be epoxy coated. Bars indicated thus 12x4-#5 etc. indicates 12 lines of bars with 4 lengths per line.

**BILL OF MATERIAL**

Bar	No.	Size	Length	Shape
a	240	#6	37'-8"	[Shape]
a1	240	#6	24'-0"	[Shape]
a2	70	#4	8'-3"	[Shape]
d	94	#4	5'-6"	[Shape]
d1	88	#4	5'-7"	[Shape]
h	134	#6	35'-11"	[Shape]
h1	112	#6	35'-11"	[Shape]
h2	152	#5	35'-9"	[Shape]
h3	12	#6	36'-3"	[Shape]
h4	NOT USED			
h5	8	#4	24'-11"	[Shape]
h6	84	#4	24'-8"	[Shape]
h7	4	#4	22'-6"	[Shape]
h8	8	#4	24'-3"	[Shape]
n(E)	120	#7	8'-7"	[Shape]
n(E)	116	#7	5'-1"	[Shape]
s	37	#4	6'-9"	[Shape]
s1	37	#4	6'-11"	[Shape]
t	292	#6	11'-9"	[Shape]
v	420	#5	11'-4"	[Shape]
v1	420	#5	3'-2"	[Shape]
v2	8	#5	12'-6"	[Shape]
v3	8	#5	6'-2"	[Shape]
v4	60	#5	18'-2"	[Shape]
v5	14	#4	27'-8"	[Shape]
w	72	#5	24'-8"	[Shape]
Concrete Box Culverts	Cu. Yd.		455.7	
Reinforcement Bars, Epoxy Coated	Pound		3310	
Reinforcement Bars	Pound		59830	



**BAR s1**

**BAR s**

(Drawing Not To Scale)

DESIGNED	
CHECKED	
DRAWN	PES
CHECKED	TPW

	200
EXAMINED	
ENGINEER OF BRIDGE DESIGN	
PASSED	
ENGINEER OF BRIDGE AND STRUCTURES	