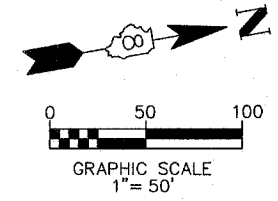
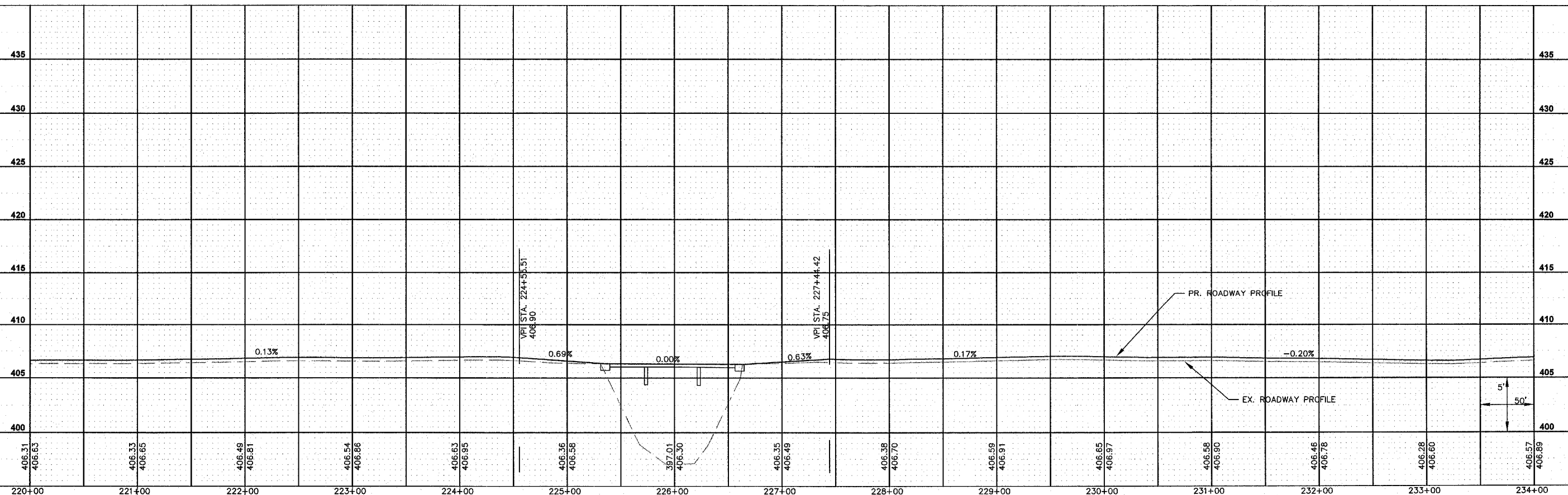


EX./PR. CURVE DATA
 P.I. STA. 230+57.89
 $\Delta = 38^{\circ}50'53''R$
 $D = 8^{\circ}00'00''$
 $R = 716.20'$
 $T = 252.55'$
 $L = 485.60'$
 $E = 43.22'$
 $SE = 0.08'/FT$
 ATTAIN SE = STA. 226+05.09 TO STA. 228+15.09
 AND 231+30.69 TO 234+30.69



REV	DATE	DESCRIPTION
△	XX/XX/XX	XXXXXXXX
△	XX/XX/XX	XXXXXXXX

P:\06-0032 County Highway 12\dwg\060032-PPROAD-01.dwg 2/22/2007 7:07:56 AM CST



SHEET TITLE:
 ROADWAY PLAN & PROFILE
 STA. 220+00 TO STA. 234+00

PROJECT TITLE:
 COUNTY HIGHWAY 12 (F.A.S. 833)
 SECTION 06-00080-00-RS
 RESURFACING & REHABILITATION
 WASHINGTON COUNTY, ILLINOIS

DESIGNED BY:	CHA	SHEET
DRAWN BY:	CHA	6
CHECKED BY:	TJM	
DATE OF PRELIMINARY:	11/9/2007	
DATE OF FINAL:	12/28/2007	
SHEET NO. 6 OF 24 SHEETS		
PROJECT NUMBER 06-0032		

Kaskasia Engineering Group LLC.
 23 Public Square Suite 404
 Peleville, Illinois 62220
 Office: (618)-233-5977 Fax: (618)-233-5977
 www.kaskasiaeng.com

PROFESSIONAL REGISTRATIONS LICENSE NO. 194.00473
 ILLINOIS PROFESSIONAL DESIGN FIRM 20-080606
 A Disadvantaged Business Enterprise