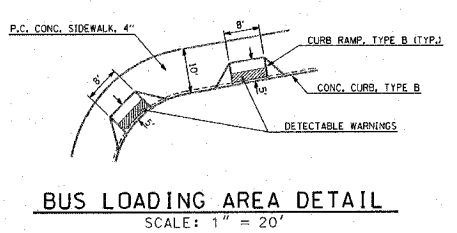
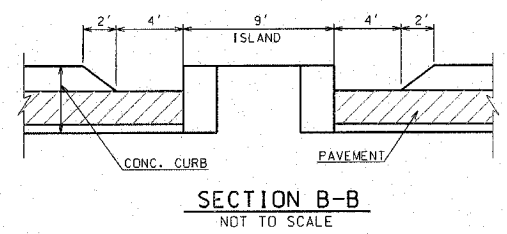
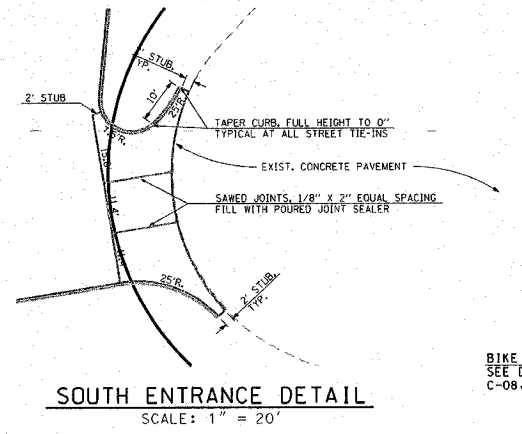
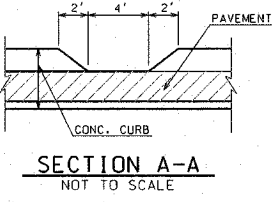
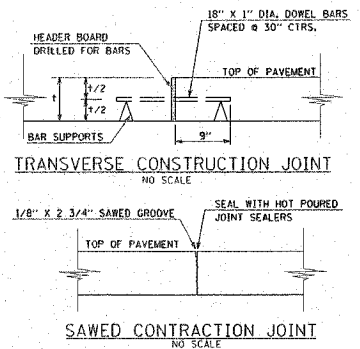
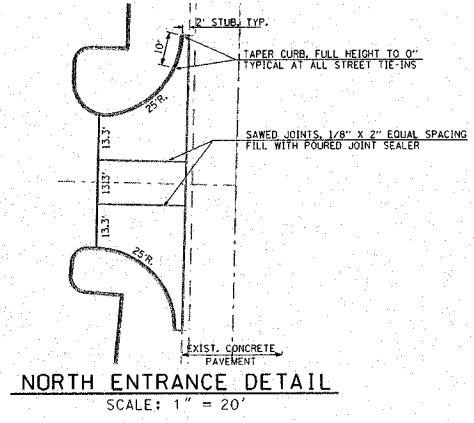


F.A. RTE.	SECTION	COUNTY	TOTAL SHEETS	SHEET NO.
	03-00026-00-PK 06-00026-01-MS	MADISON	53	6

T.B.M. #1 - IRON PIN 365.1' NORTH OF CENTER OF CUL-DE-SAC AND 21.2' WEST OF CENTER LINE. ELEV. 437.18



Call 48 hours before you dig!
(Excluding Sat., Sun. & Holidays)



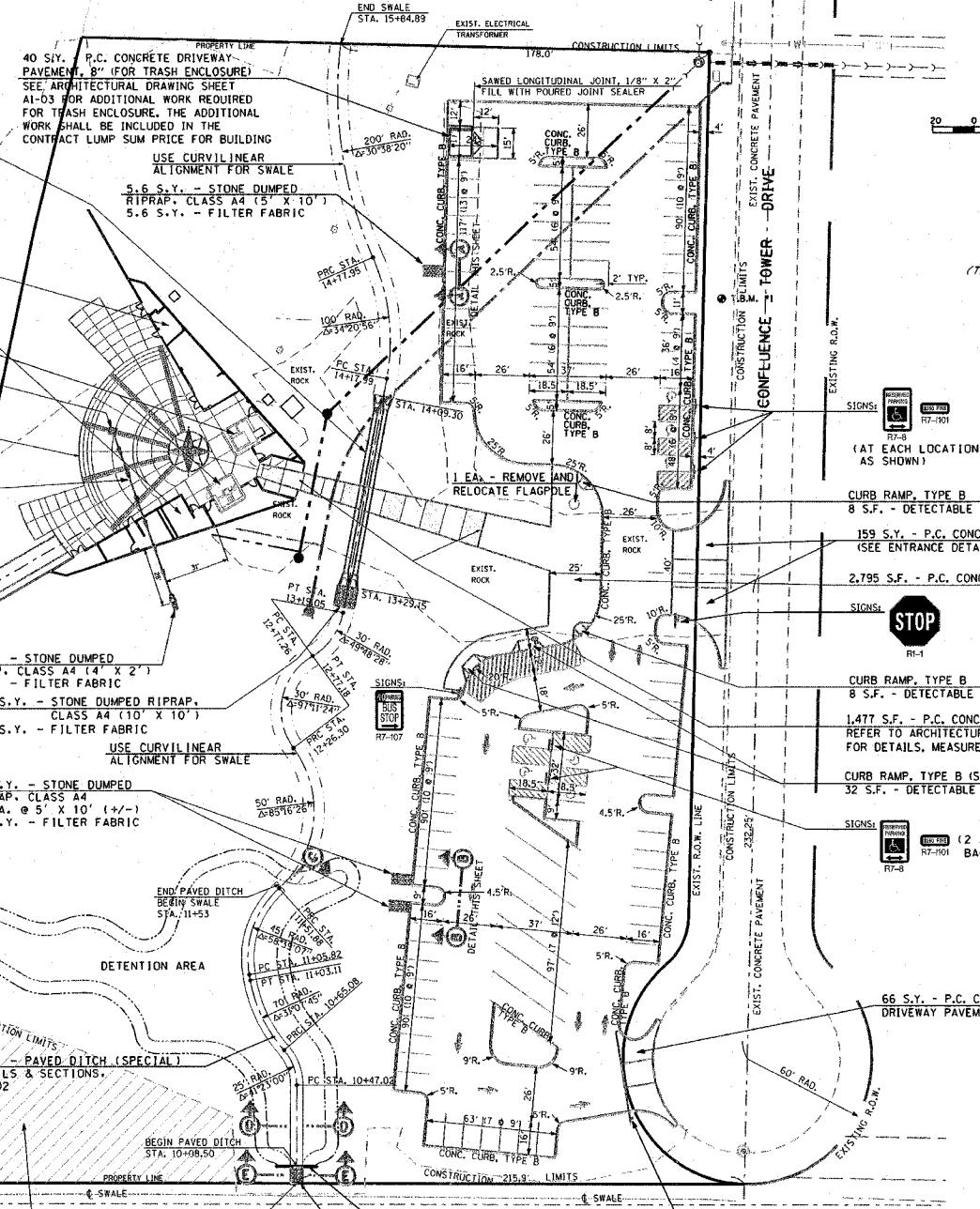
- 2 CULVERTS - EACH AS FOLLOWS**
- 81.7 FT. - PIPE CULVERTS, CLASS A, T1, 24", @ 0.18%
 - F.L. - 430.43 (N1) F.L. - 430.29 (S)
 - 4 EA. - PRECAST REINFORCED CONCRETE FLARED END SECTIONS, 24"
- 1 L.S. - BUILDING TYPOR BUILDING - SEE ARCHITECTURAL PLANS**
- EXIST. STRUCTURES**
- 1 EA. - FLUSH INLET BOX FOR MEDIAN, STANDARD 542546, TOP - 434.83; F.L. - 431.01
 - 5,173 S.F. - P.C. CONC. SIDEWALK, 4" (SEE PLAZA PAVING NOTE THIS SHEET) REFER TO ARCHITECTURAL PLANS AND SPECIFICATIONS FOR MEASUREMENTS AND SLOPES OF PLAZA AREA
 - 86.2 FT. - STORM SEWER, CLASS A, TYPE 1, 15" @ 0.50%
 - 1 EA. - PRECAST REINFORCED CONCRETE FLARED END SECTIONS, 15" (F.L. - 430.50)
 - 24.3 C.Y. - TRENCH BACKFILL

BIKE TRAIL ACCESS PATH
SEE DETAILS - SHEETS C-02, C-08, C-09 AND C-10

- 1 S.Y. - STONE DUMPED RIPRAP, CLASS A4 (14' X 2')
- 1 S.Y. - FILTER FABRIC
- 11.1 S.Y. - STONE DUMPED RIPRAP, CLASS A4 (10' X 10')
- 11.1 S.Y. - FILTER FABRIC
- USE CURVILINEAR ALIGNMENT FOR SWALE
- 12 S.Y. - STONE DUMPED RIPRAP, CLASS A4 (2 EA. @ 5' X 10' +/-)
- 12 S.Y. - FILTER FABRIC

146.4 FT. - PAVED DITCH (SPECIAL)
SEE DETAILS & SECTIONS, SHEET C-02

NOTE:
AREA OF CULTURAL RESOURCE INTEREST. NO UNAUTHORIZED ENTRY SHALL BE ALLOWED (AS DETERMINED BY THE OWNER).



- GENERAL QUANTITIES:**
(THIS SHEET ONLY - UNLESS OTHERWISE SPECIFICALLY CALLED OUT)
- PAVEMENT - SEE SHEET "C-02" FOR DETAIL
 - 456 TONS - HOT-MIX ASPHALT SURFACE COURSE, MIX "C", NTD
 - 456 TONS - HOT-MIX ASPHALT BINDER COURSE, IL-19.0, NTD
 - 1,080 GAL. - BITUMINOUS MATERIALS (PRIME COAT)
 - 2,532 TONS - SUBBASE GRANULAR MATERIAL, TYPE A
 - 6,123 S.Y. - PROCESSING MODIFIED SOIL, 12"
 - 104 TONS - LIME
 - 1,959 FT. - CONCRETE CURB, TYPE B
 - 3,334 FT. - THERMOPLASTIC PAVEMENT MARKING - LINE 4"
 - 98 S.F. - THERMOPLASTIC PAVEMENT MARKING - LETTERS & SYMBOLS

(AT EACH LOCATION, AS SHOWN)

CURB RAMP, TYPE B
8 S.F. - DETECTABLE WARNINGS

159 S.Y. - P.C. CONC. DRIVEWAY PAVEMENT, 8" (SEE ENTRANCE DETAIL, THIS SHEET)

2,795 S.F. - P.C. CONC. SIDEWALK, 4"

CURB RAMP, TYPE B
8 S.F. - DETECTABLE WARNINGS

1,477 S.F. - P.C. CONC. SIDEWALK, 4"
REFER TO ARCHITECTURAL PLANS AND SPECIFICATIONS FOR DETAILS, MEASUREMENTS AND SLOPES IN THIS AREA

CURB RAMP, TYPE B (SEE DETAIL, THIS SHEET)
32 S.F. - DETECTABLE WARNINGS (2 @ 16 S.F.)

(2 AT EACH LOCATION, MOUNT BACK TO BACK, AS SHOWN)

66 S.Y. - P.C. CONC. DRIVEWAY PAVEMENT, 8"

SIGN	TYPE	SIZE	LETTERS/BACKGROUND	QUAN.	S.F.	POST	
R1-1	STOP	30" x 30"	WHITE ON RED	2	12.50	24"	
R7-8	RSRVD PRKNG	12" x 18"	BLACK ON WHITE	7	10.50	60"	
R7-110T	FINE	12" x 6"	GREEN ON WHITE	7	3.50	-	
R7-10T	NO PARKING	12" x 18"	RED ON WHITE	1	1.50	12"	
TOTAL					QUAN.	18.00	96"

PLAZA PAVING NOTE:
ELEVATIONS SHOWN IN THE PLAZA AREA ARE FINISHED ELEVATIONS. DUE TO THE RELATIVELY FLAT EXPANSION OF THE PLAZA, ALL REQUIRED ELEVATIONS CANNOT BE SHOWN OR DETAILED. CONTRACTOR SHALL INSURE THAT THE COMPLETED SURFACE SLOPES TO FLUSH INLET BOX. CONTRACTOR SHALL COORDINATE WITH ALL DISCIPLINES TO ELIMINATE UNDERGROUND CONFLICTS AND TO INSURE THAT THE FINAL FINISH OF THE SUBGRADE WILL BE CORRECT TO ACCEPT THE VARIOUS SURFACE MATERIALS AND CONTOURS OF THE FINISHED PLAZA AREA. PAVEMENT JOINTING SHALL BE AS SHOWN ON THE ARCHITECTURAL DRAWINGS AND AS DIRECTED BY THE RESIDENT ENGINEER. AT ANY CONSTRUCTION JOINT, PLACE #4 EPOXY COATED REINFORCEMENT BARS 2' - 6" LONG AT 2' - 6" CENTERS AT 2" DEPTH. ADDITIONAL WORK CREATED BY THIS COORDINATION SHALL BE INCLUDED IN THE CONTRACT UNIT PRICE FOR P.C. CONCRETE SIDEWALK, 4".

UNDERGROUND FACILITIES, STRUCTURES, AND UTILITIES HAVE BEEN PLOTTED FROM AVAILABLE SURVEYS AND RECORDS AND, THEREFORE, THEIR LOCATIONS MUST BE CONSIDERED APPROXIMATE ONLY. THERE MAY BE OTHERS THE EXISTENCE OF WHICH IS AT PRESENT NOT KNOWN. VERIFICATION OF THE LOCATIONS OF UNDERGROUND UTILITIES, SHOWN OR NOT SHOWN, WILL BE THE RESPONSIBILITY OF THE CONSTRUCTION CONTRACTOR.

211 North Broadway
Suite 1900
St. Louis, MO 63102
Tel: (314) 241-0125
Fax: (314) 241-0125



**LEWIS AND CLARK
MEMORIAL TOWER**

SHEET TITLE:
CONSTRUCTION PLAN

REV. NO.	DATE	REMARKS

KENNEDY PROJECT NO.
10-02048

ISSUE DATE

SHEET NO.
C-05

REVISED 02/28/2008