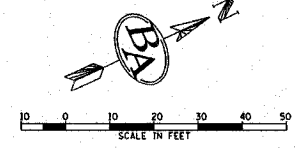


UNDERGROUND FACILITIES, STRUCTURES, AND UTILITIES HAVE BEEN PLOTTED FROM AVAILABLE SURVEYS AND RECORDS AND, THEREFORE, THEIR LOCATIONS MUST BE CONSIDERED APPROXIMATE ONLY. THERE MAY BE OTHERS THE EXISTENCE OF WHICH IS AT PRESENT NOT KNOWN. VERIFICATION OF THE LOCATIONS OF UNDERGROUND UTILITIES, SHOWN OR NOT SHOWN, WILL BE THE RESPONSIBILITY OF THE CONSTRUCTION CONTRACTOR.



Joint Utility Locating Information for Excavators

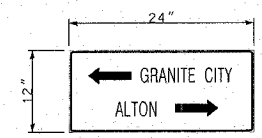
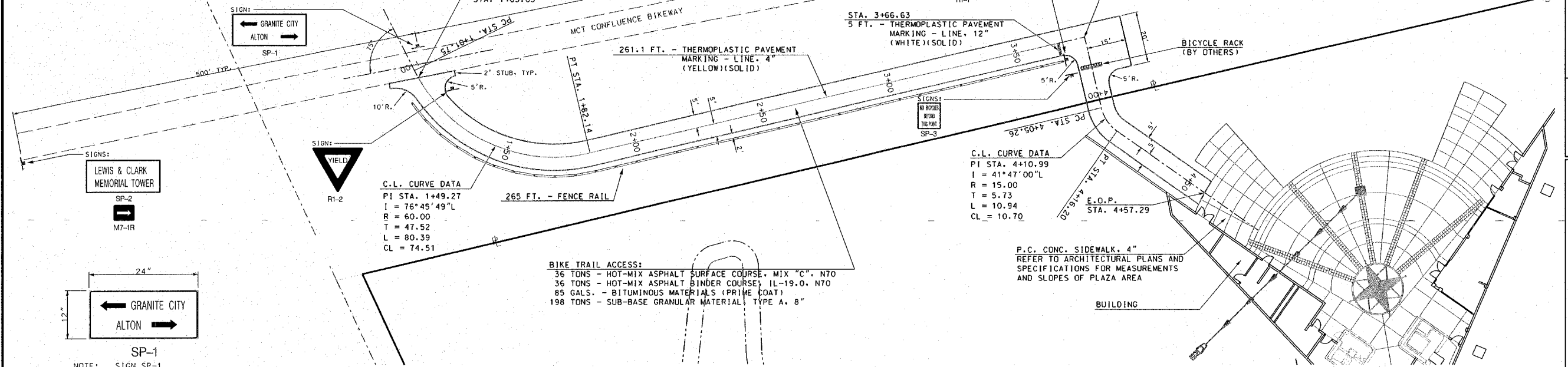
Call 48 hours before you dig!! (Excluding Sat., Sun. & Holidays)



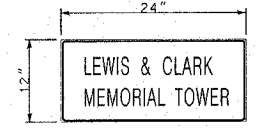
T.B.M. #1 - IRON PIN 365.1' NORTH OF CENTER OF CUL-DE-SAC AND 21.2' WEST OF CENTER LINE. ELEV. 437.18

| F.A. RTE. | SECTION | COUNTY | TOTAL SHEETS | SHEET NO. |
|-----------|----------------------------------|---------|--------------|-----------|
| | 03-00026-00-PK 06-00026-01-M5 | MADISON | 53 | 9 |

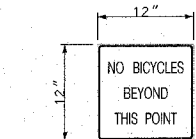
| SIGN | TYPE | SIZE | LETTERS/BACKGROUND | QUAN. | S.F. | POST |
|-------|-------------|-----------|--------------------|-------------|------|------|
| M7-1L | DIRECTION | 12" x 9" | WHITE ON GREEN | 1 | 0.75 | 12" |
| M7-1R | DIRECTION | 12" x 9" | WHITE ON GREEN | 1 | 0.75 | 12" |
| RI-1 | STOP | 18" x 18" | WHITE ON RED | 1 | 2.25 | 12" |
| RI-2 | YIELD | 18" x 18" | RED ON WHITE | 1 | 2.25 | 12" |
| SP-1 | INFORMATION | 24" x 12" | WHITE ON GREEN | 1 | 2.00 | 12" |
| SP-2 | INFORMATION | 24" x 12" | WHITE ON BROWN | 2 | 4.00 | 24" |
| SP-3 | INFORMATION | 12" x 12" | BLACK ON WHITE | 1 | 1.00 | 12" |
| SP-4 | INFORMATION | 24" x 12" | BLACK ON WHITE | 1 | 2.00 | 12" |
| TOTAL | | | | QUAN. 15.00 | 108' | |



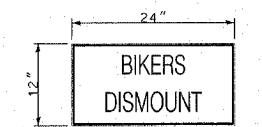
NOTE: SIGN SP-1 ALL LETTERS AND SYMBOLS TO BE 4" HIGH WHITE LETTERS ON GREEN BACKGROUND



NOTE: SIGN SP-2 ALL LETTERS AND SYMBOLS TO BE 4" HIGH WHITE LETTERS ON BROWN BACKGROUND

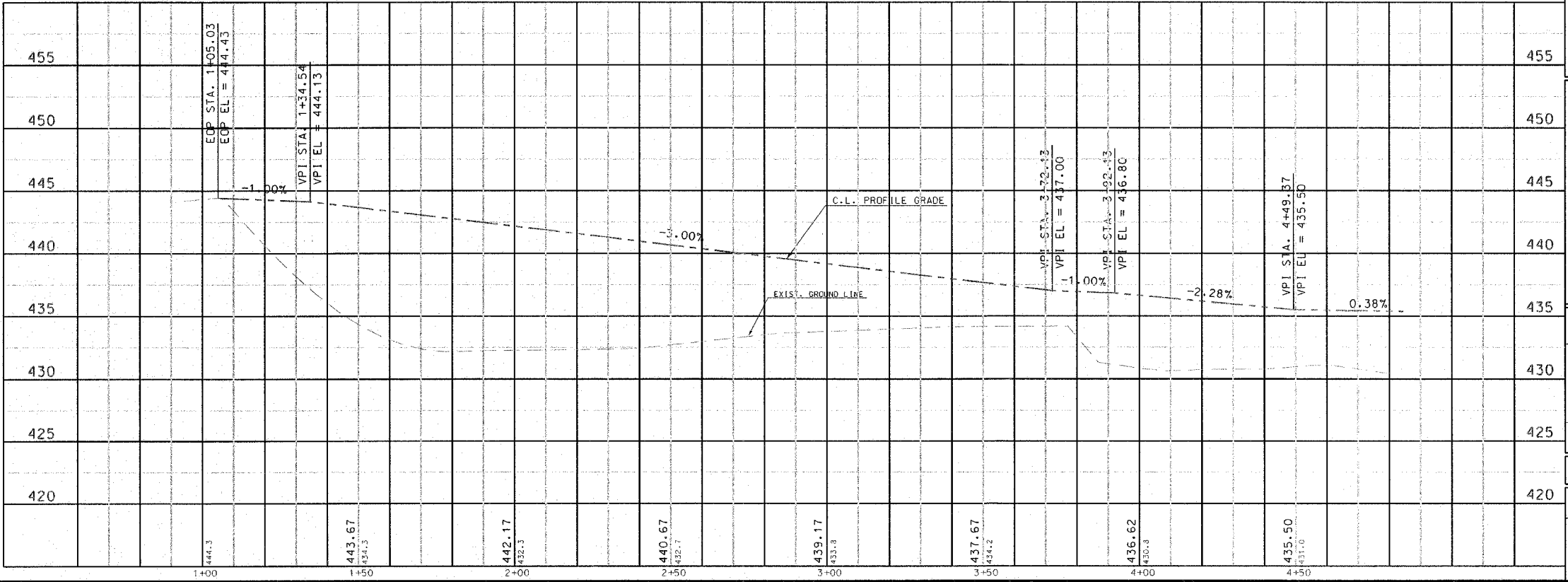


NOTE: SIGN SP-3 ALL LETTERS AND SYMBOLS TO BE 3" HIGH BLACK LETTERS ON WHITE BACKGROUND



NOTE: SIGN SP-4 ALL LETTERS AND SYMBOLS TO BE 4" HIGH BLACK LETTERS ON WHITE BACKGROUND

TRAFFIC CONTROL SIGNS, DETAILS NOT TO SCALE



211 North Broadway
 Suite 1900
 St. Louis, Missouri 63102
 Phone: (314) 541-0125
 Fax: (314) 541-0125



LEWIS AND CLARK MEMORIAL TOWER
 HARTFORD, ILLINOIS 62033

SHEET TITLE:
BIKE TRAIL ACCESS PLAN AND PROFILE

| REV. NO. | DATE | REMARKS |
|----------|------|---------|
| | | |

KENNEDY PROJECT NO
 10-02048

ISSUE DATE
 SHEET NO.
C-08