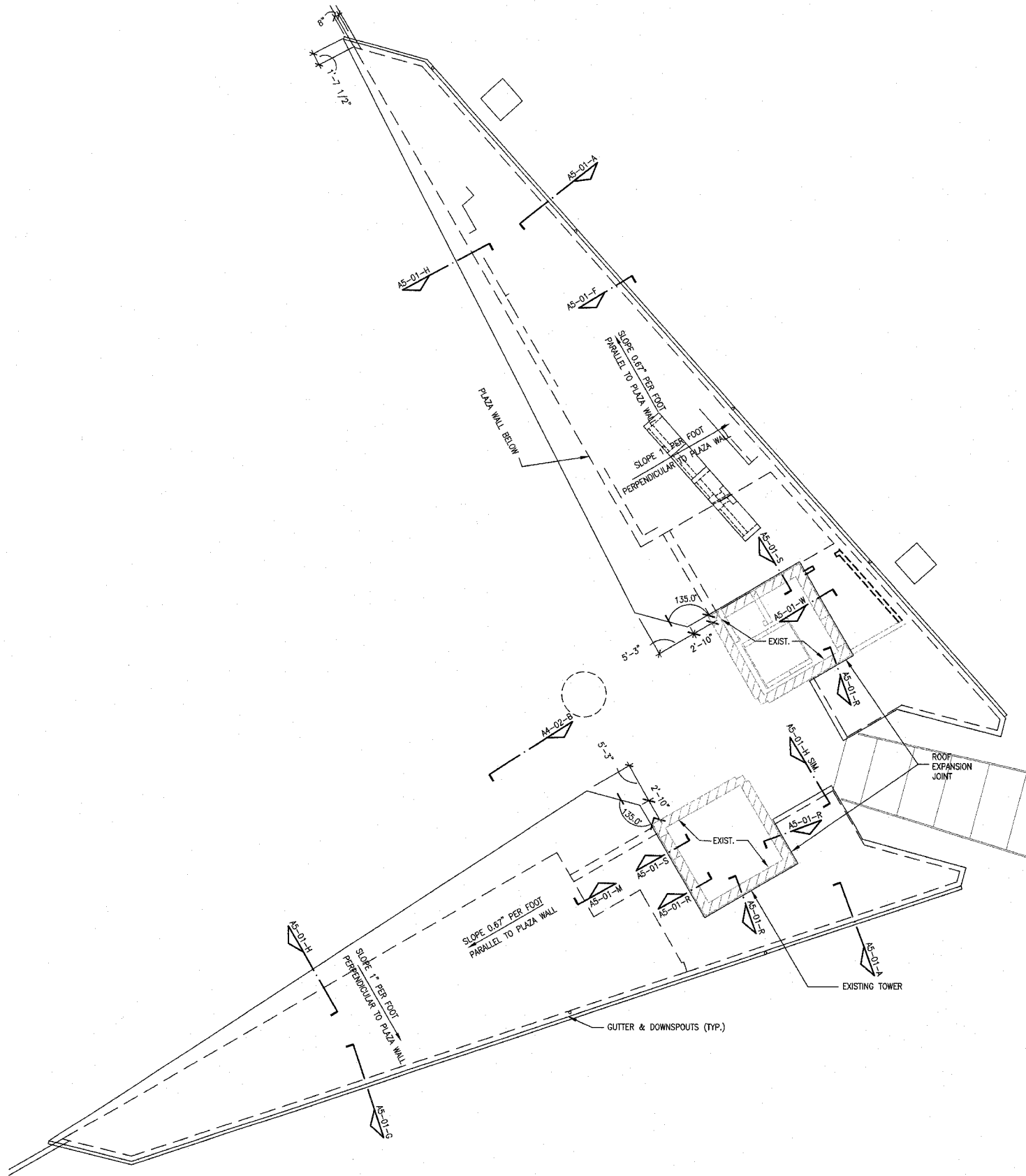


F.A. RTE.	SECTION	COUNTY	TOTAL SHEETS	SHEET NO.
	03-00026-00-PK 06-00026-01-MS	MADISON	53	26

FEDERAL AID PROJECT

Note: Remove temporary elevator machine enclosure as required.  
(Temporary enclosure shall remain as long as possible to reduce the chances of damaging elevator equipment.)



**A** ROOF PLAN  
1/8" = 1'-0"  
PLAN NORTH

**KAI**  
**LEWIS AND CLARK MEMORIAL TOWER**  
**VILLAGE OF HARTFORD, ILLINOIS**  
HARTFORD, ILLINOIS 62049

SHEET TITLE:  
ROOF PLAN

REV. NO.	REMARKS	DATE
1	DOT REV.	11/9/06

KENNEDY PROJECT NO  
KAI# 10-02048

ISSUE DATE  
APRIL 11, 2008

SHEET NO

**A3-02**