

F.A. RTE.	SECTION	COUNTY	TOTAL SHEETS	SHEET NO.
	03-00026-00-PK 06-00026-01-MS	MADISON	53	27

FEDERAL AID PROJECT

211 N. Broadway
Suite 1900
St. Louis, MO 63102
(314) 241-8188
FAX (314) 241-0125



LEWIS AND CLARK MEMORIAL TOWER
VILLAGE OF HARTFORD, ILLINOIS
HARTFORD, ILLINOIS 62049

SHEET TITLE:
REFLECTED CEILING PLAN

REV. NO.	DATE	REMARKS
1	11/9/06	DOT REV.

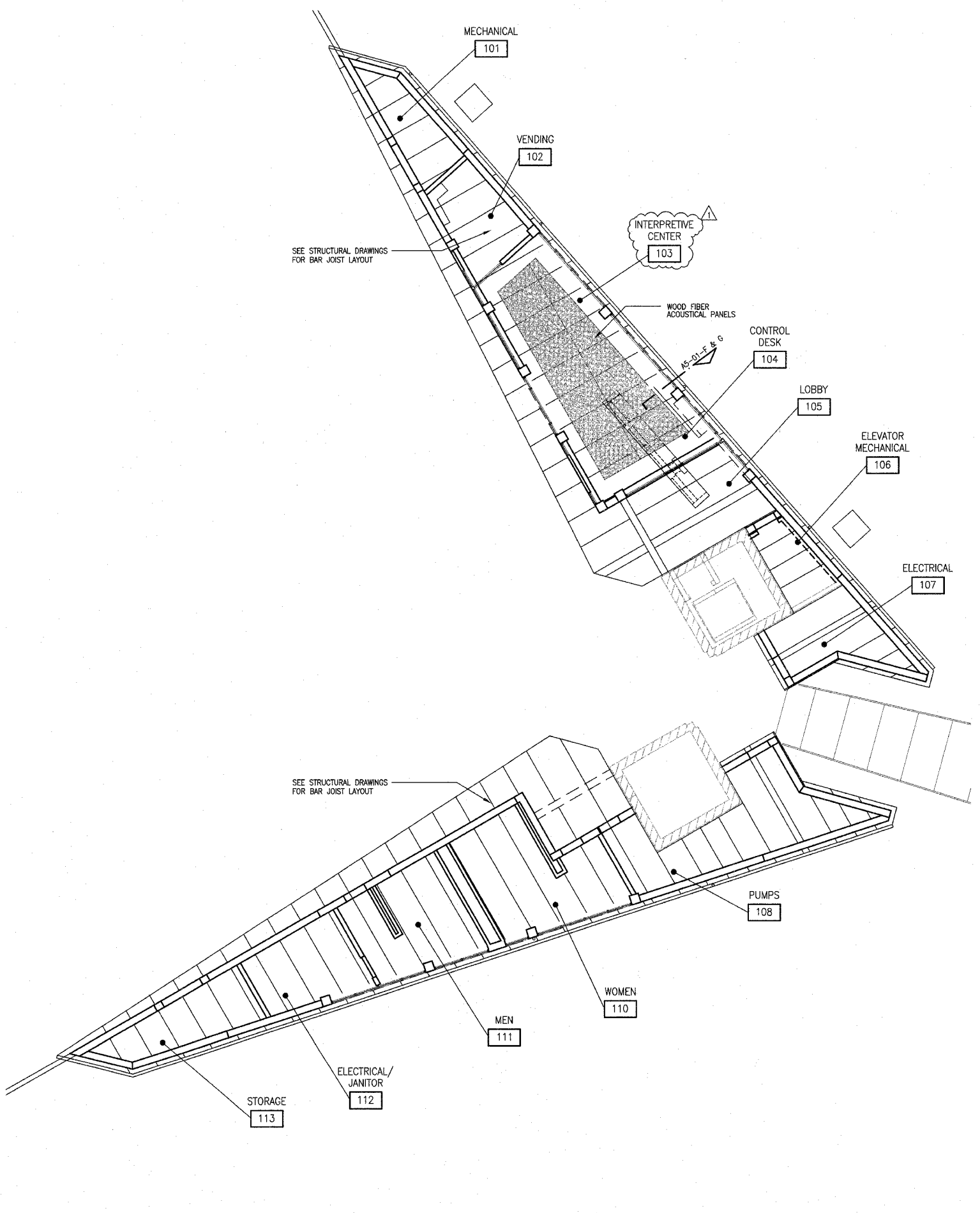
KENNEDY PROJECT NO
KAI# 10-02048

ISSUE DATE
APRIL 11, 2008

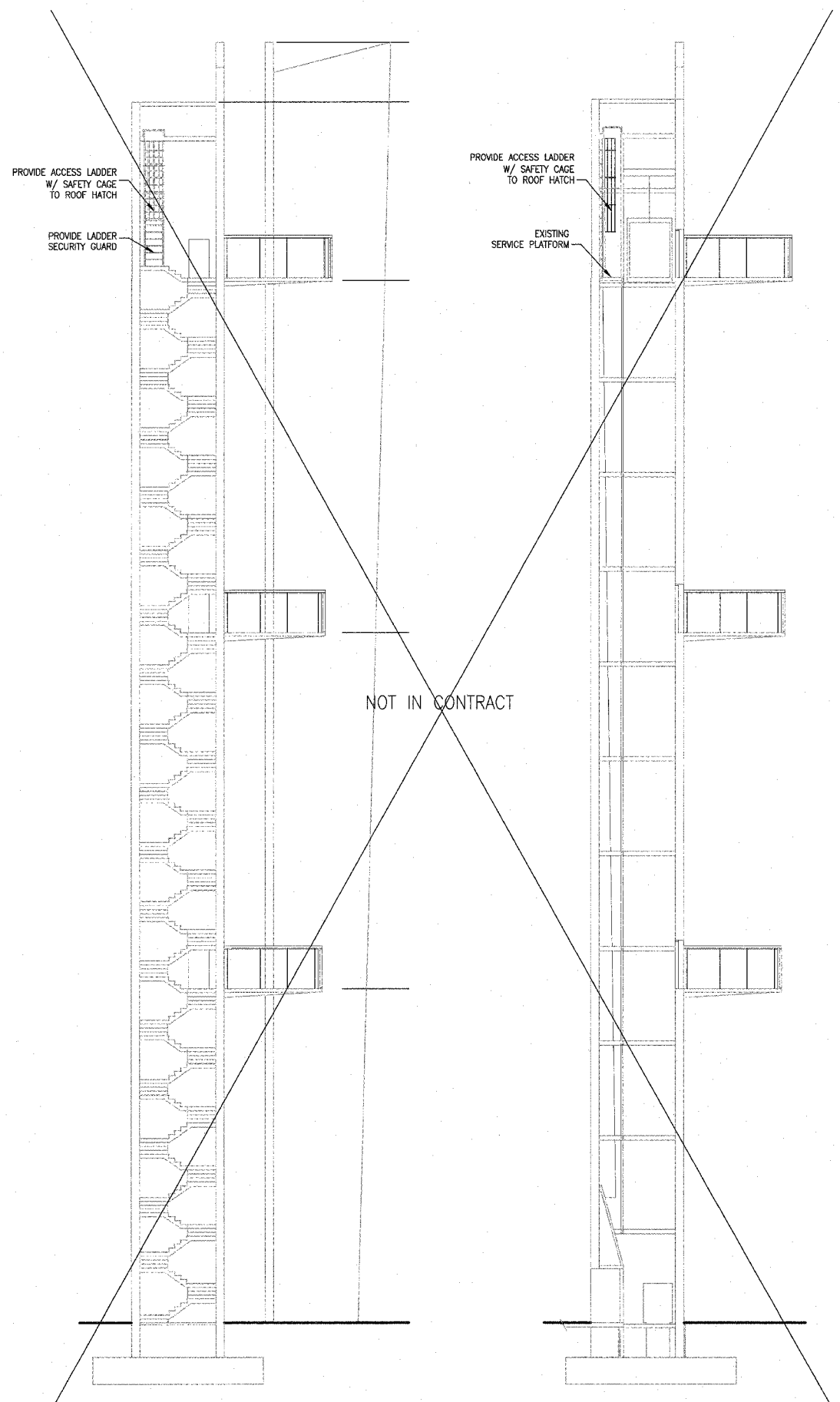
SHEET NO

A3-03

©2008 KENNEDY ASSOCIATES INCORPORATED



A REFLECTED CEILING PLAN
1/8" = 1'-0"



C SECTION THRU SOUTH TOWER
1" = 10'-0"

D SECTION THRU NORTH TOWER
1" = 10'-0"

Drawing Stamp Information