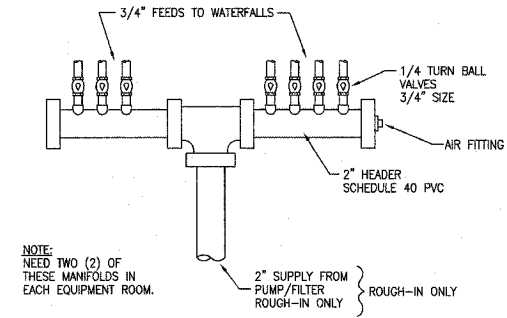


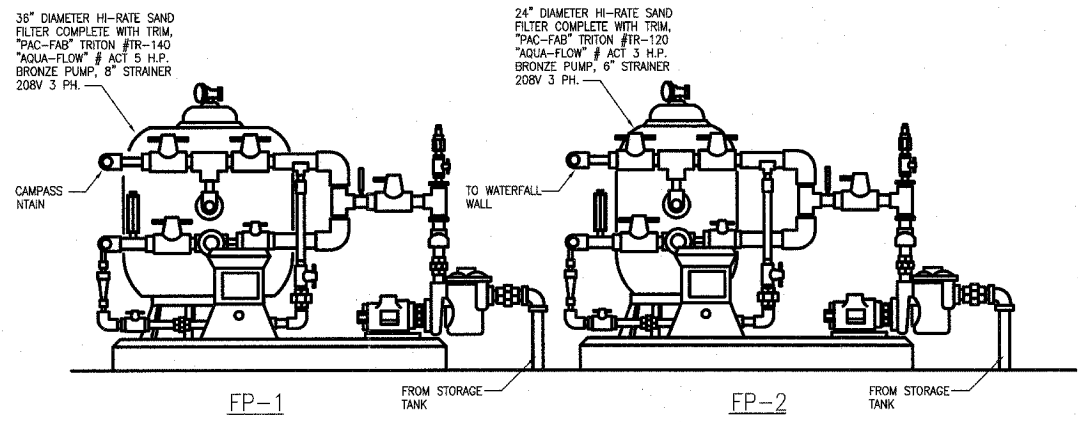
F.A. RTE.	SECTION	COUNTY	TOTAL SHEETS	SHEET NO.
	03-00026-00-PK 06-00026-01-MS	MADISON	53	38

FEDERAL AID PROJECT

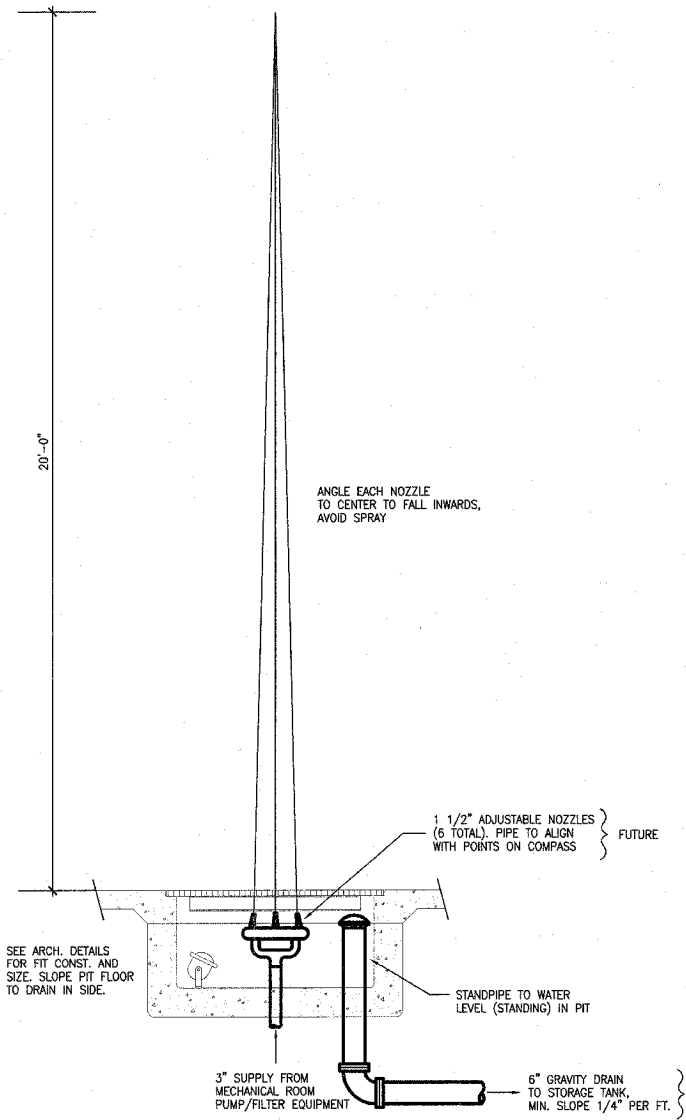
NOTE:  
PROVIDE AIR FITTING ON SYSTEM  
TO BLOW OUT FOR FREEZING PROTECTION.



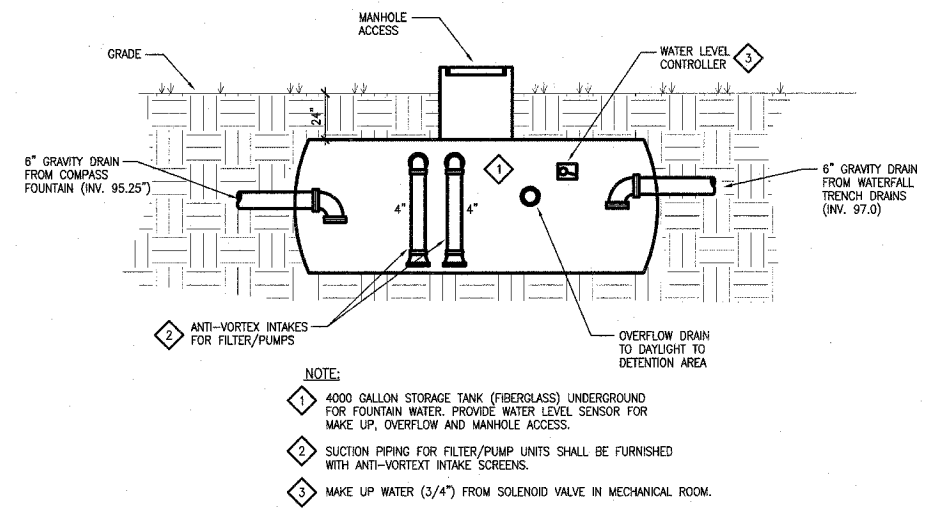
**C** FUTURE FOUNTAIN MANIFOLD ARRANGEMENT  
NOT TO SCALE



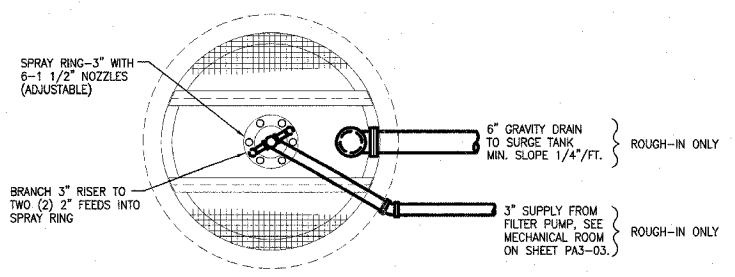
**A** FUTURE FILTER PUMP PIPING ARRANGEMENT  
NOT TO SCALE



**E** FOUNTAIN SECTION  
1/2"=1'-0"



**D** SCHEMATIC PIPING OF STORAGE TANK (ROUGH-IN ONLY)  
NOT TO SCALE



**F** FOUNTAIN PLAN  
1/2"=1'-0"

211 N. Broadway  
Suite 1800  
St. Louis, MO 63102  
(314) 241-8188  
FAX (314) 241-0125

**KAI**

**LEWIS AND CLARK MEMORIAL TOWER**  
**VILLAGE OF HARTFORD, ILLINOIS**  
HARTFORD, ILLINOIS 62049

SHEET TITLE:  
**FOUNTAIN ISOMETRIC & DETAILS- PLUMBING**

REV. NO.	REMARKS	DATE

KENNEDY PROJECT NO  
KAI# 10-02048

ISSUE DATE  
APRIL 11, 2008

SHEET NO

**P3-04**

U:\10-02048\CAD\PHASE-2\DWG\PHASE2\PA3-04.DWG | 4/12/2005 11:18:19 AM | 3rd fl. | 10/4/3600 | Image: none

© 2008 KENNEDY ASSOCIATES INCORPORATED