

F.A. RTE.	SECTION	COUNTY	TOTAL SHEETS	SHEET NO.
	03-00026-00-PK 06-00026-01-MS	MADISON	53	46

FEDERAL AID PROJECT

211 N. Broadway
Suite 1900
St. Louis, MO 63102
(314) 241-8188
FAX (314) 241-0725

KAI

LEWIS AND CLARK MEMORIAL TOWER
VILLAGE OF HARTFORD, ILLINOIS
HARTFORD, ILLINOIS 62049

SHEET TITLE:
LANDING ELECTRICAL PLANS

REV. NO.	REMARKS	DATE

KENNEDY PROJECT NO
KAI 10-02048

ISSUE DATE
APRIL 11, 2008

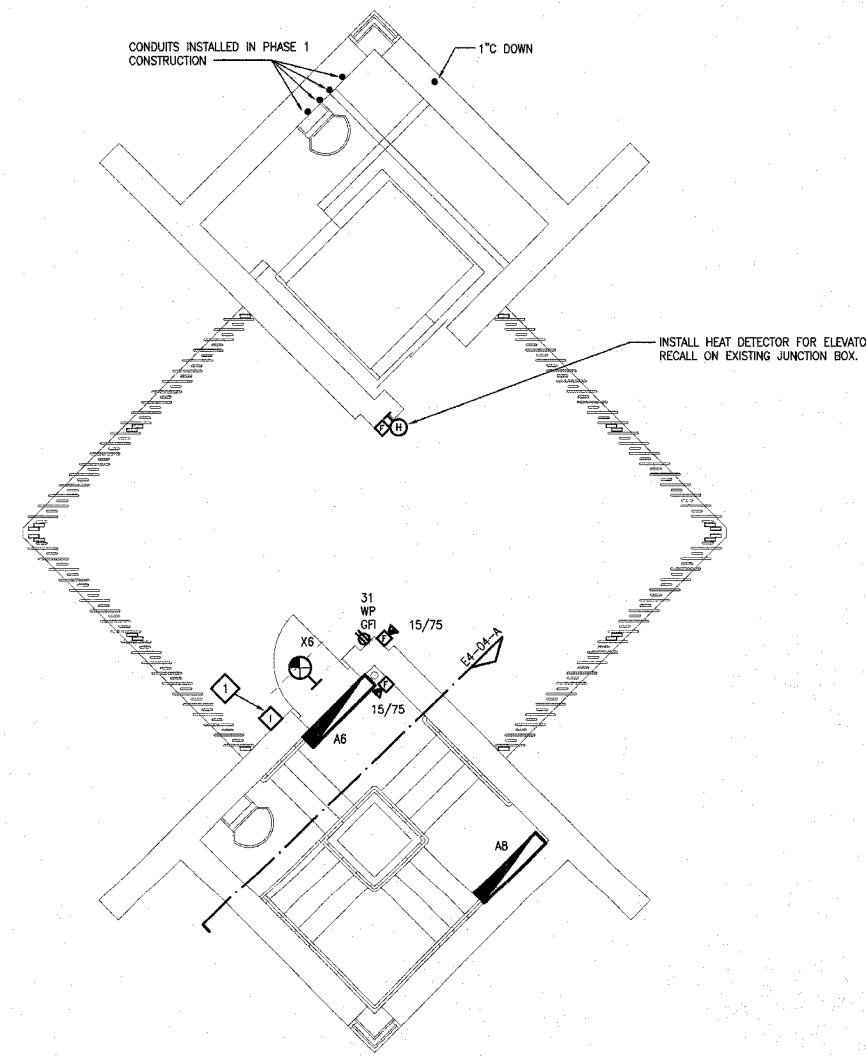
SHEET NO

E4-03

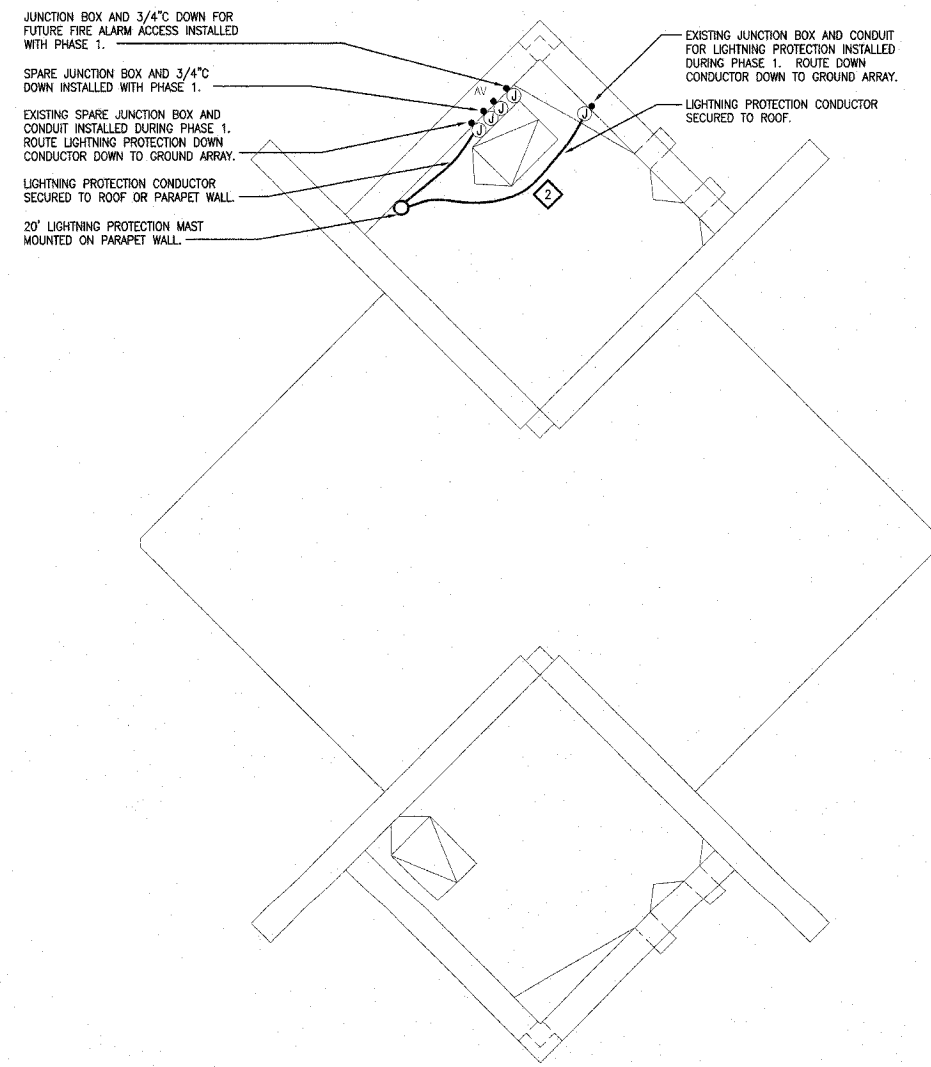
© 2008 KENNEDY ASSOCIATES INCORPORATED

KEYED NOTES

- 1 E.C. SHALL FURNISH AND INSTALL APHONE LE-DA OUTDOOR WEATHERPROOF INTERCOM STATION WITHIN EXISTING ROUGH-IN INSTALLED DURING PHASE 1 CONSTRUCTION.
- 2 SEE DETAILS F AND G ON SHEET E6-01.



D THIRD LANDING ELECTRICAL PLAN
1/4"=1'-0"



C ROOF LANDING ELECTRICAL PLAN
1/4"=1'-0"

