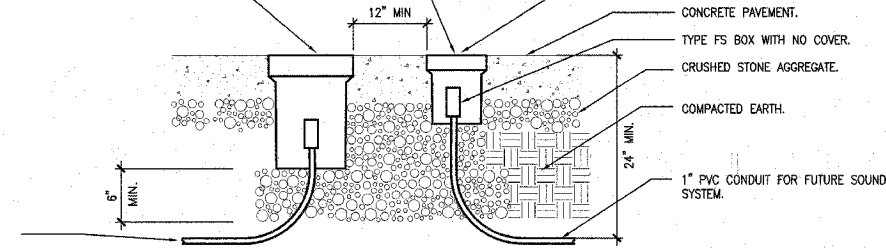


F.A. RTE.	SECTION	COUNTY	TOTAL SHEETS	SHEET NO.
	03-00026-00-PK 06-00026-01-MS	MADISON	53	49

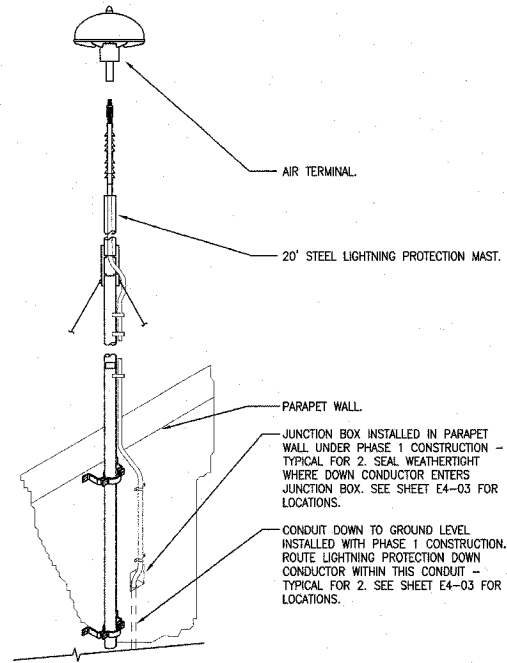
FEDERAL AID PROJECT

QUAZITE PC0608BA06 OPEN BOTTOM BOX WITH #PC0608CG00 GASKETED COVER WITH (4) BOLTS. COVER LOGO TO READ "SOUND".

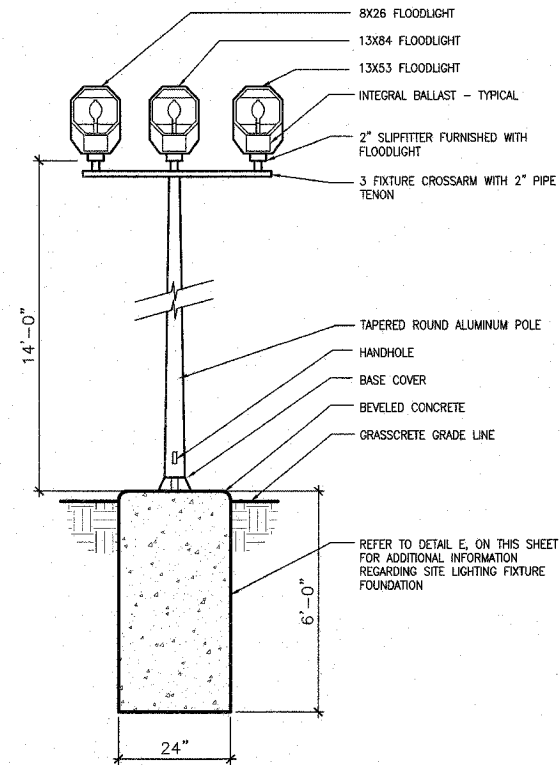
INSTALL TOP OF BOX FLUSH WITH PLAZA PAVEM



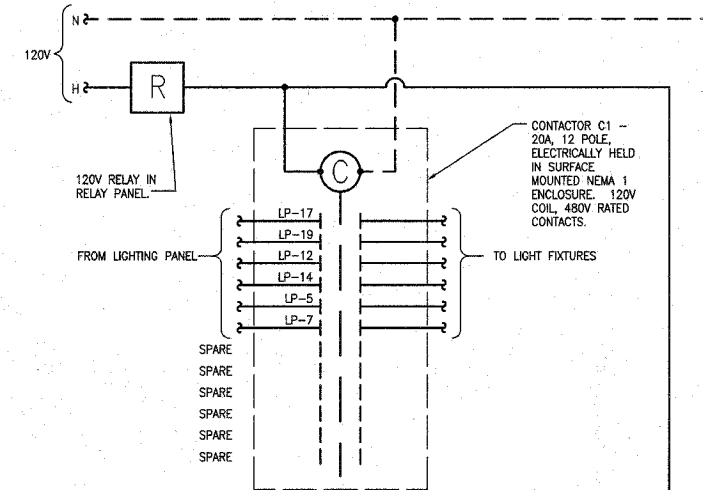
(A) BOXES AT PLAZA
NO SCALE



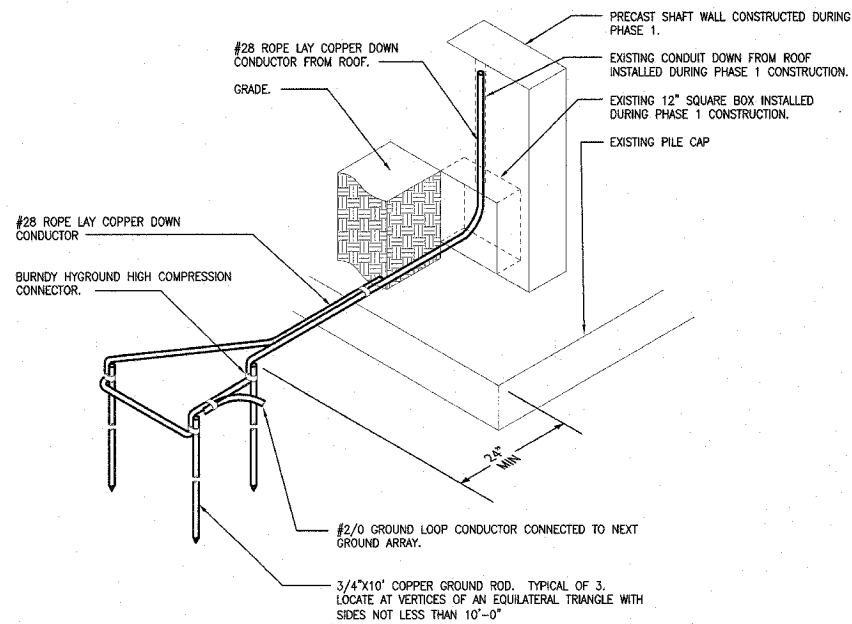
(F) LIGHTNING PROTECTION MOUNTING
NO SCALE



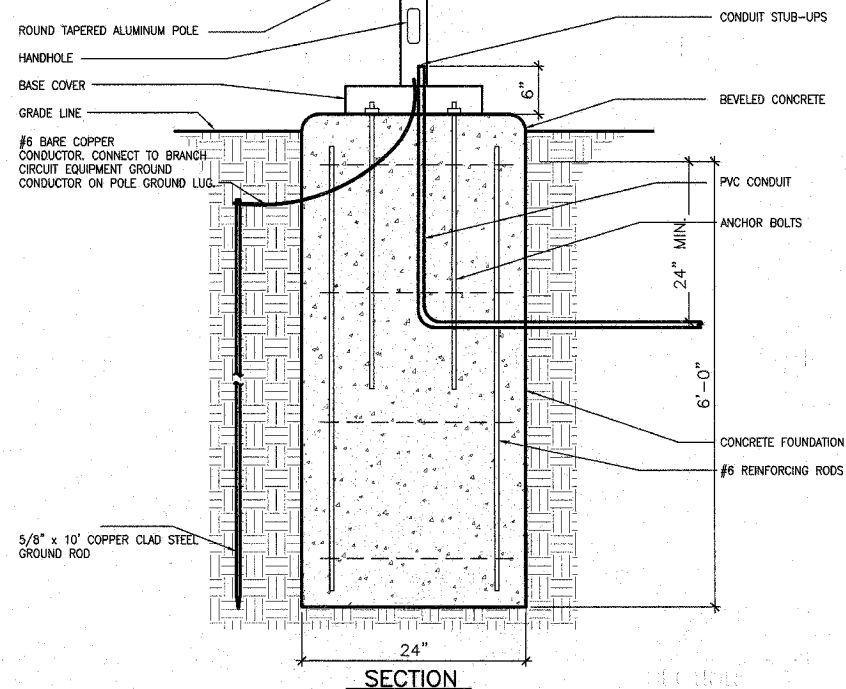
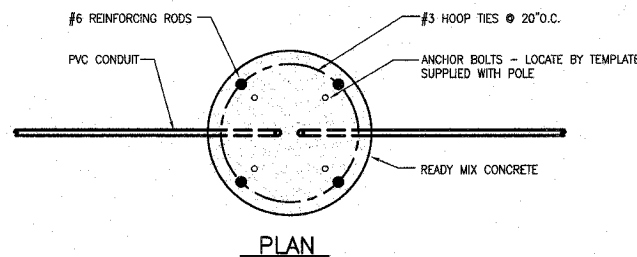
(D) FLOODLIGHTING FIXTURE "TYPE M"
NO SCALE



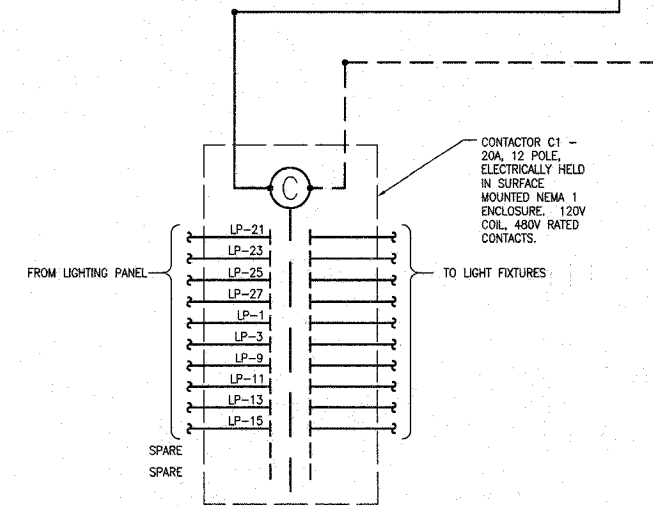
(B) CONTACTOR C1 DETAIL
NO SCALE



(G) LIGHTNING PROTECTION GROUND ARRAY
NO SCALE



(E) SITE LIGHTING FIXTURE FOUNDATION DETAIL
NO SCALE



(C) CONTACTOR C2 DETAIL
NO SCALE

211 N. Broadway
Suite 1900
St. Louis, MO 63102
(314) 241-8188
FAX (314) 241-0125

KAI

LEWIS AND CLARK MEMORIAL TOWER
VILLAGE OF HARTFORD, ILLINOIS
HARTFORD, ILLINOIS 62049

SHEET TITLE:
ELECTRICAL DETAILS

REV. NO.	REMARKS	DATE

KENNEDY PROJECT NO
KAI# 10-02048

ISSUE DATE
APRIL 11, 2008

SHEET NO

E6-01