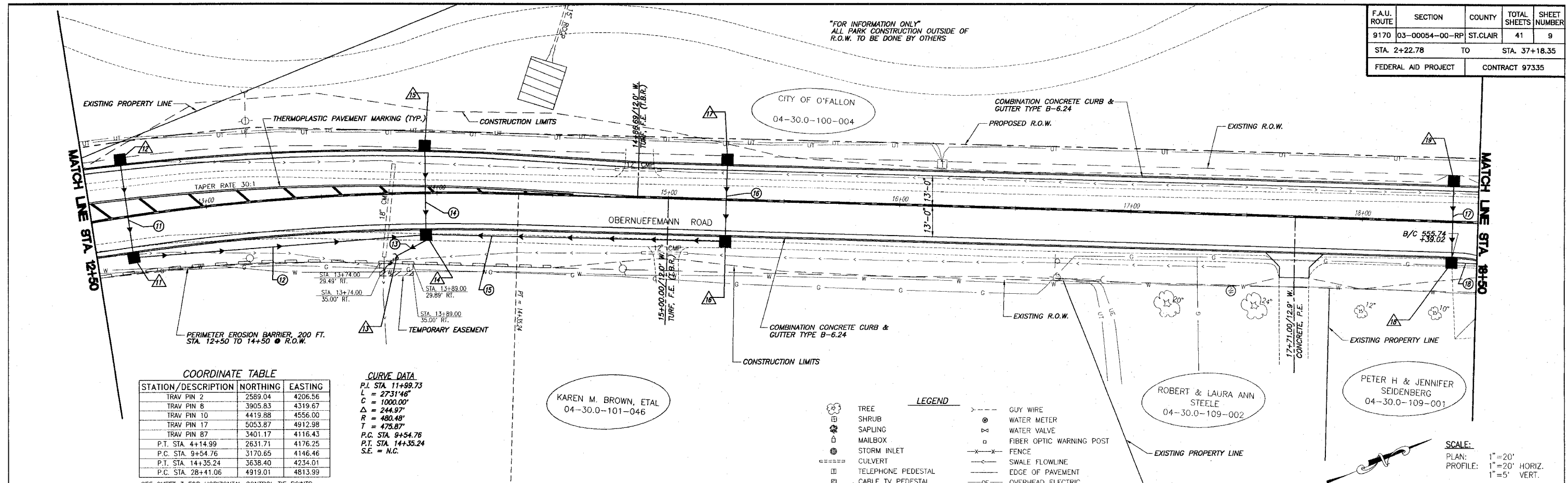


F.A.U. ROUTE	SECTION	COUNTY	TOTAL SHEETS	SHEET NUMBER
9170	03-00054-00-RP	ST. CLAIR	41	9
STA. 2+22.78		TO	STA. 37+18.35	
FEDERAL AID PROJECT		CONTRACT 97335		



COORDINATE TABLE

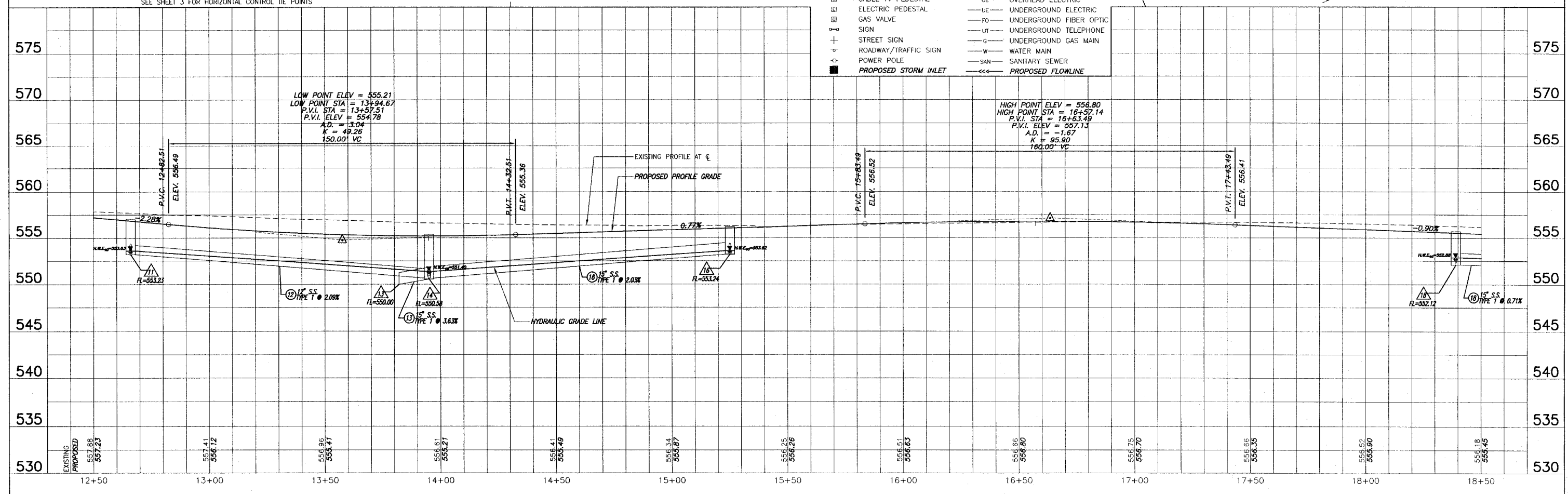
STATION/DESCRIPTION	NORTHING	EASTING
TRAV PIN 2	2589.04	4206.56
TRAV PIN 8	3905.83	4319.67
TRAV PIN 10	4419.88	4556.00
TRAV PIN 17	5053.87	4912.98
TRAV PIN 87	3401.17	4116.43
P.T. STA. 4+14.99	2631.71	4176.25
P.C. STA. 9+54.76	3170.65	4146.46
P.T. STA. 14+35.24	3638.40	4234.01
P.C. STA. 28+41.06	4919.01	4813.99

CURVE DATA

P.I. STA. 11+99.73
 L = 2731.46'
 C = 1000.00'
 Δ = 244.97°
 R = 480.48'
 T = 475.87'
 P.C. STA. 9+54.76
 P.T. STA. 14+35.24
 S.E. = N.C.

- LEGEND**
- TREE
 - SHRUB
 - ◇ SAPLING
 - MAILBOX
 - STORM INLET
 - CULVERT
 - TELEPHONE PEDESTAL
 - CABLE TV PEDESTAL
 - ELECTRIC PEDESTAL
 - GAS VALVE
 - SIGN
 - STREET SIGN
 - ROADWAY/TRAFFIC SIGN
 - POWER POLE
 - PROPOSED STORM INLET
 - GUY WIRE
 - WATER METER
 - WATER VALVE
 - FIBER OPTIC WARNING POST
 - FENCE
 - SWALE FLOWLINE
 - EDGE OF PAVEMENT
 - OVERHEAD ELECTRIC
 - UNDERGROUND ELECTRIC
 - UNDERGROUND FIBER OPTIC
 - UNDERGROUND TELEPHONE
 - UNDERGROUND GAS MAIN
 - WATER MAIN
 - SANITARY SEWER
 - PROPOSED FLOWLINE

SCALE:
 PLAN: 1" = 20'
 PROFILE: 1" = 20' HORIZ.
 1" = 5' VERT.



F:\03103 - O'Fallon O'Fallon Road Improvements - RP.dwg, 2/26/2008 12:40:21 PM, Plotted by M.A.L.