

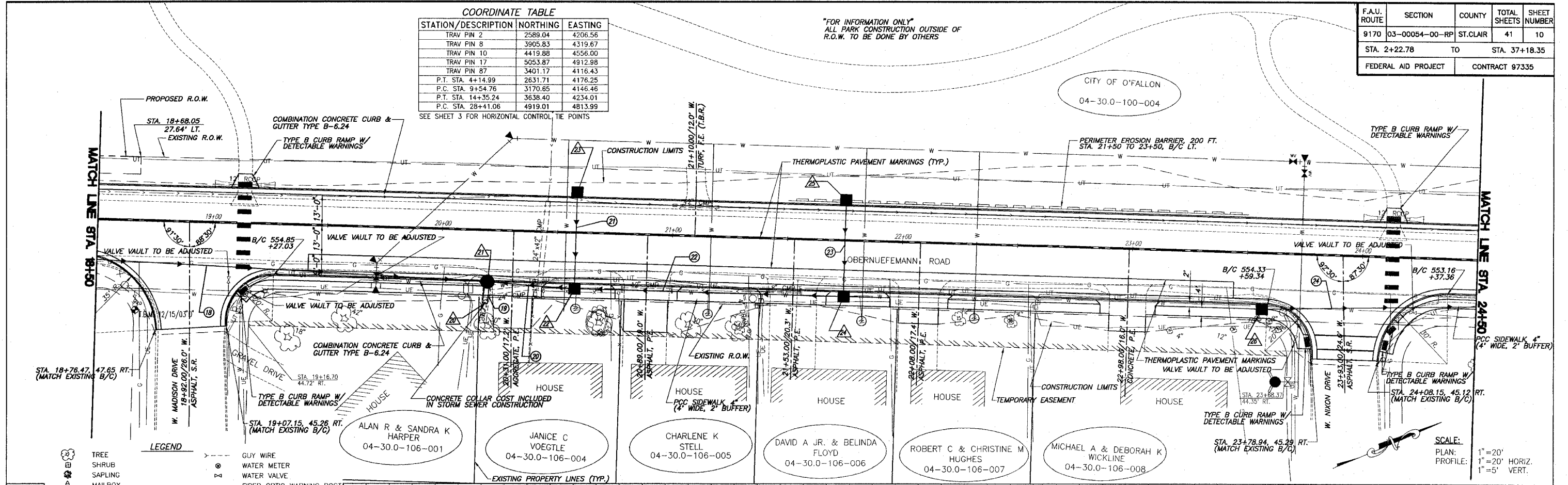
F.A.U. ROUTE	SECTION	COUNTY	TOTAL SHEETS	SHEET NUMBER
9170	03-00054-00-RP	ST. CLAIR	41	10
STA. 2+22.78 TO STA. 37+18.35				
FEDERAL AID PROJECT			CONTRACT 97335	

COORDINATE TABLE

STATION/DESCRIPTION	NORTHING	EASTING
TRAV PIN 2	2589.04	4206.56
TRAV PIN 8	3905.83	4319.67
TRAV PIN 10	4419.88	4556.00
TRAV PIN 17	5053.87	4912.98
TRAV PIN 87	3401.17	4116.43
P.T. STA. 4+14.99	2631.71	4176.25
P.C. STA. 9+54.76	3170.85	4146.46
P.T. STA. 14+35.24	3638.40	4234.01
P.C. STA. 28+41.06	4919.01	4813.99

SEE SHEET 3 FOR HORIZONTAL CONTROL TIE POINTS

"FOR INFORMATION ONLY"
ALL PARK CONSTRUCTION OUTSIDE OF
R.O.W. TO BE DONE BY OTHERS

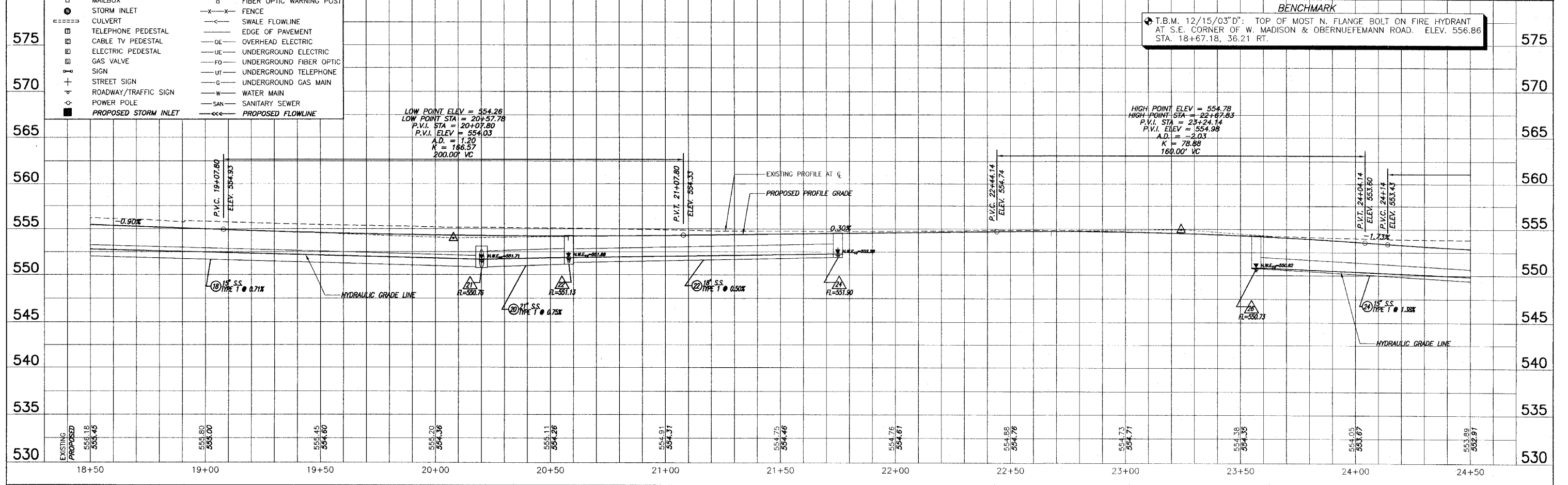


LEGEND

	TREE		GUY WIRE
	SHRUB		WATER METER
	SAPLING		WATER VALVE
	MAILBOX		FIBER OPTIC WARNING POST
	STORM INLET		FENCE
	CULVERT		SWALE FLOWLINE
	TELEPHONE PEDESTAL		EDGE OF PAVEMENT
	CABLE TV PEDESTAL		OVERHEAD ELECTRIC
	ELECTRIC PEDESTAL		UNDERGROUND ELECTRIC
	GAS VALVE		UNDERGROUND FIBER OPTIC
	SIGN		UNDERGROUND TELEPHONE
	STREET SIGN		UNDERGROUND GAS MAIN
	ROADWAY/TRAFFIC SIGN		WATER MAIN
	POWER POLE		SANITARY SEWER
	PROPOSED STORM INLET		PROPOSED FLOWLINE

SCALE:
PLAN: 1"=20'
PROFILE: 1"=20' HORIZ.
1"=5' VERT.

BENCHMARK
T.B.M. 12/15/03"D": TOP OF MOST N. FLANGE BOLT ON FIRE HYDRANT
AT S.E. CORNER OF W. MADISON & OBERNUEFEMANN ROAD. ELEV. 556.86
STA. 18+67.18, 36.21 RT.



ROADWAY PLAN AND PROFILE OBERNUEFEMANN ROAD IMPROVEMENTS
SECTION 03-00054-00-RP ST. CLAIR COUNTY, ILLINOIS

E:\91351 - O'Fallon Obernuefemann Road\Draw\10 - PP.dwg, 2/27/2008, 12:46:54 PM, Plotted by P.A.L.