

F.A.U. ROUTE	SECTION	COUNTY	TOTAL SHEETS	SHEET NUMBER
9170	03-00054-00-RP	ST. CLAIR	41	11
STA. 2+22.78		TO	STA. 37+18.35	
FEDERAL AID PROJECT		CONTRACT 97335		

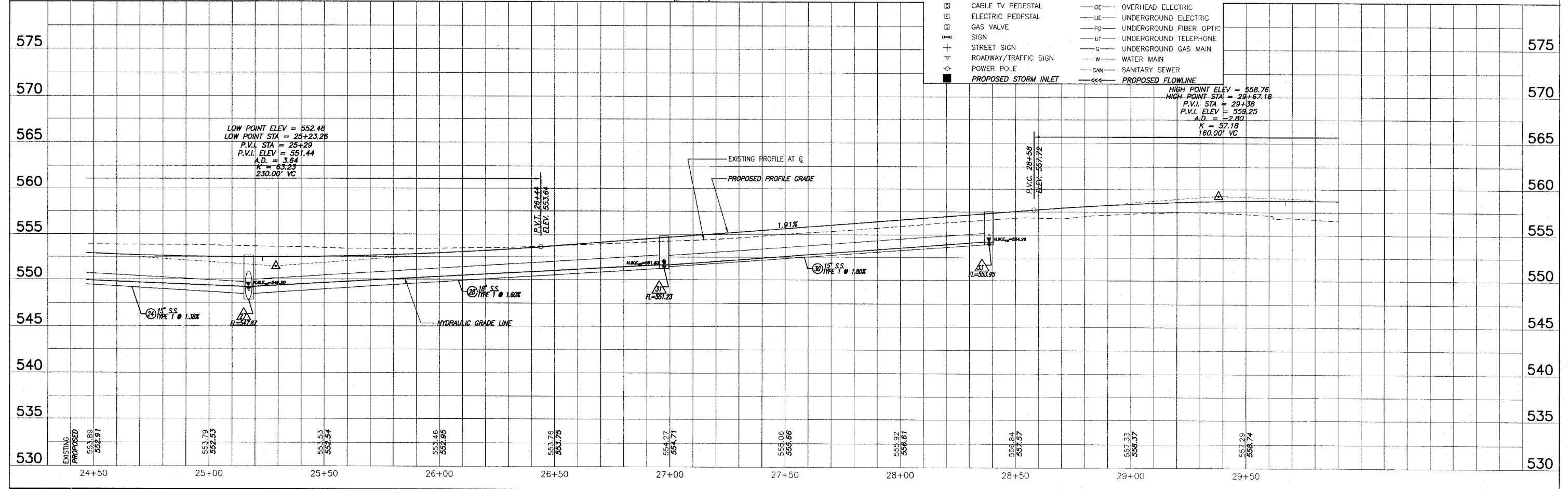
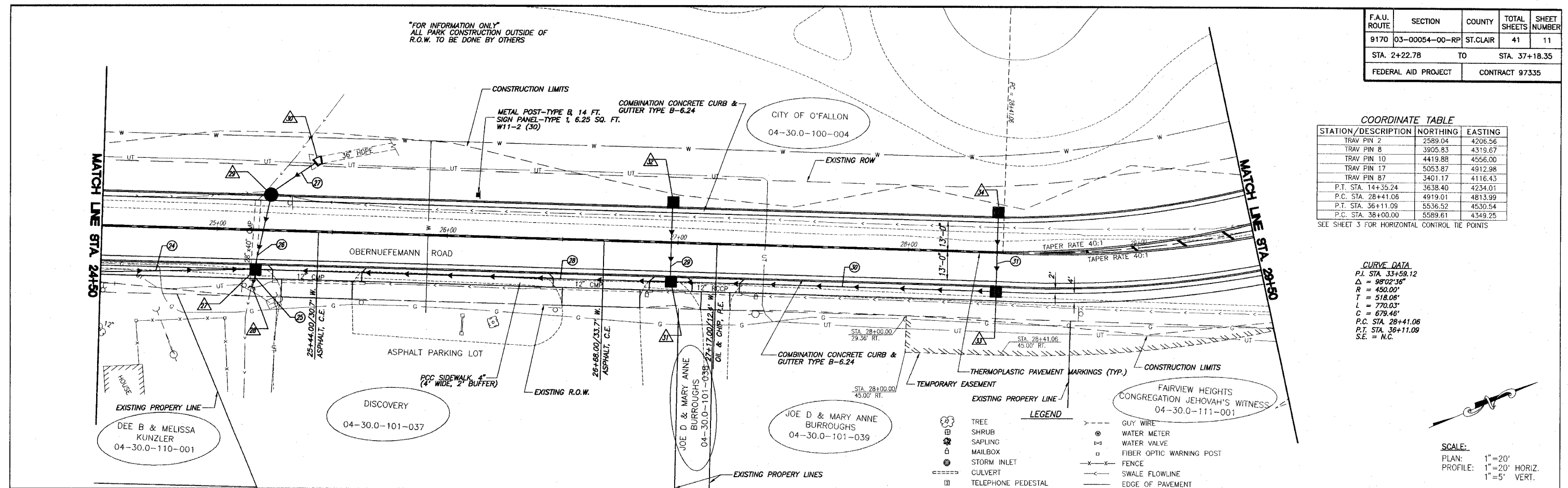
COORDINATE TABLE

STATION/DESCRIPTION	NORTHING	EASTING
TRAV PIN 2	2589.04	4206.56
TRAV PIN 8	3905.83	4319.67
TRAV PIN 10	4419.88	4556.00
TRAV PIN 17	5053.87	4912.98
TRAV PIN 87	3401.17	4116.43
P.T. STA. 14+35.24	3638.40	4234.01
P.C. STA. 28+41.06	4919.01	4813.99
P.T. STA. 36+11.09	5536.52	4530.54
P.C. STA. 38+00.00	5589.61	4349.25

SEE SHEET 3 FOR HORIZONTAL CONTROL TIE POINTS

CURVE DATA
P.I. STA. 33+59.12
 $\Delta = 98^{\circ}02'36''$
 $R = 450.00'$
 $T = 518.06'$
 $L = 770.03'$
 $C = 679.46'$
P.C. STA. 28+41.06
P.T. STA. 36+11.09
S.E. = N.C.

SCALE:
PLAN: 1" = 20'
PROFILE: 1" = 20' HORIZ.
1" = 5' VERT.



ROADWAY PLAN AND PROFILE OBERNEUEFEMANN ROAD IMPROVEMENTS
SECTION 03-00054-00-RP ST. CLAIR COUNTY, ILLINOIS

E:\NE103 - O'Fallon, Oberneufemann Road\Drawings\11_Plan.dwg, 2/25/2008 12:38:12 PM, Michael R. H.A.L.