

F.A.U. ROUTE	SECTION	COUNTY	TOTAL SHEETS	SHEET NUMBER
9170	03-00054-00-RP	ST. CLAIR	41	12
STA. 2+22.78		TO		STA. 37+18.35
FEDERAL AID PROJECT			CONTRACT 97335	

COORDINATE TABLE

STATION/DESCRIPTION	NORTHING	EASTING
TRAV PIN 2	2589.04	4206.56
TRAV PIN 8	3905.83	4319.67
TRAV PIN 10	4419.88	4556.00
TRAV PIN 17	5053.87	4912.98
TRAV PIN 87	3401.17	4116.43
P.T. STA. 14+35.24	3638.40	4234.01
P.C. STA. 28+41.06	4919.01	4813.99
P.T. STA. 36+11.09	5536.52	4530.54
P.C. STA. 38+00.00	5589.61	4349.25

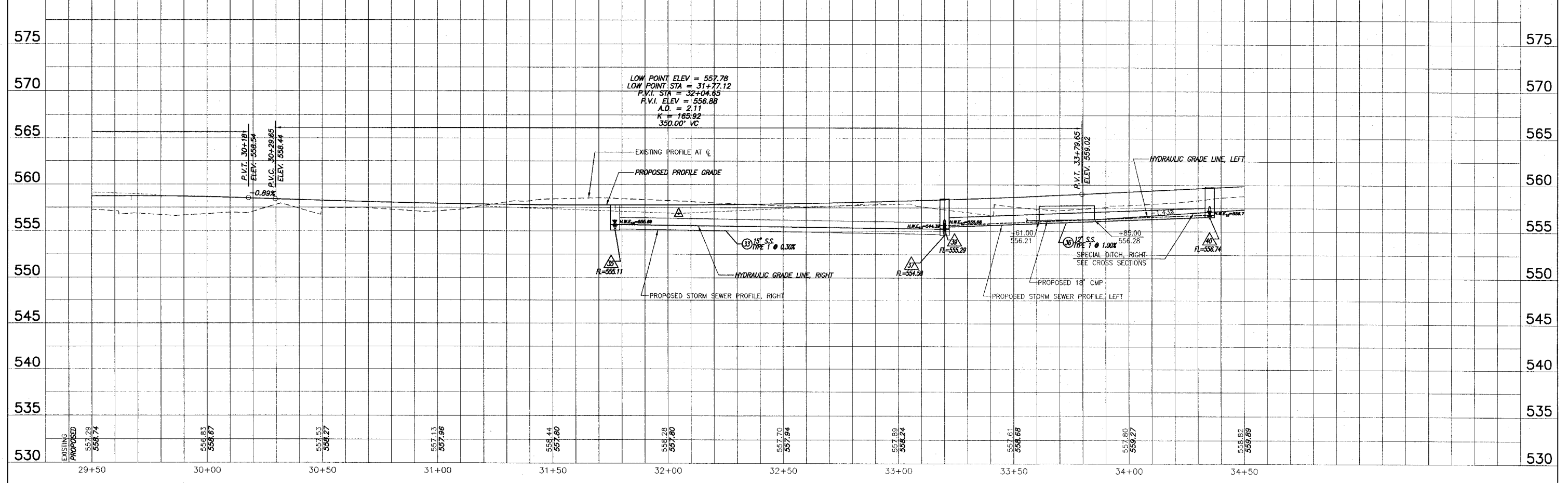
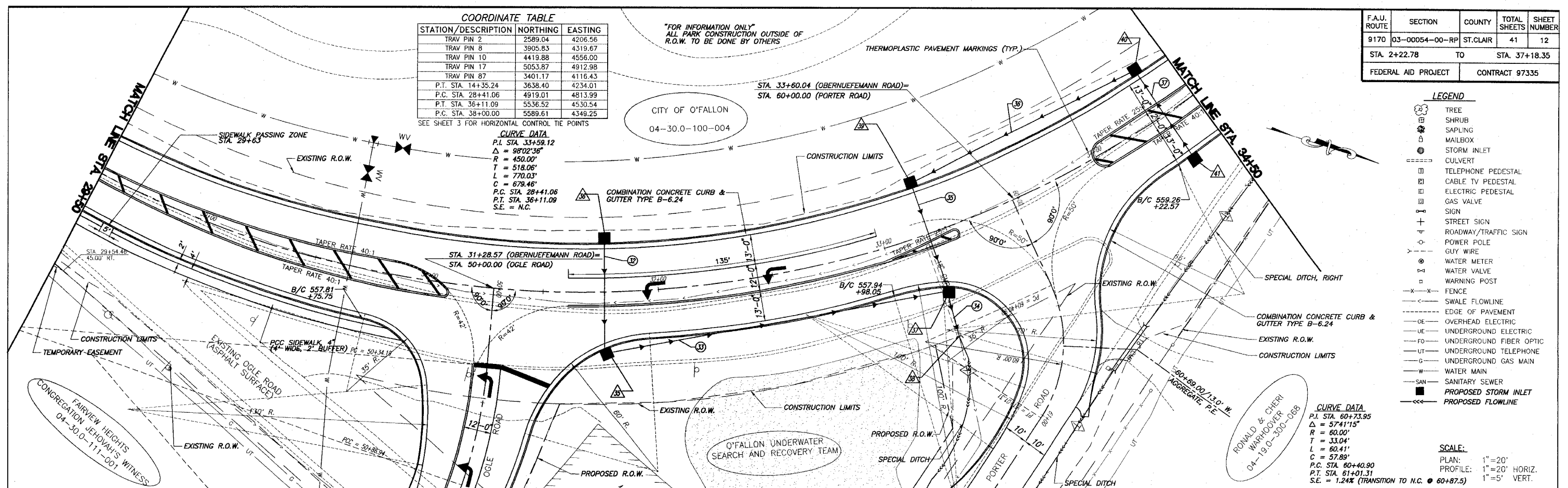
SEE SHEET 3 FOR HORIZONTAL CONTROL TIE POINTS

CURVE DATA
P.I. STA. 33+59.12
 $\Delta = 98^{\circ}02'36"$
R = 450.00'
T = 518.06'
L = 770.03'
C = 679.46'
P.C. STA. 28+41.06
P.T. STA. 36+11.09
S.E. = N.C.

CURVE DATA
P.I. STA. 60+73.95
 $\Delta = 57^{\circ}41'15"$
R = 60.00'
T = 33.04'
L = 60.41'
C = 57.89'
P.C. STA. 60+40.90
P.T. STA. 61+01.31
S.E. = 1.24% (TRANSITION TO N.C. @ 60+87.5)

- LEGEND**
- TREE
 - SHRUB
 - SAPLING
 - MAILBOX
 - STORM INLET
 - CULVERT
 - TELEPHONE PEDESTAL
 - CABLE TV PEDESTAL
 - ELECTRIC PEDESTAL
 - GAS VALVE
 - SIGN
 - STREET SIGN
 - ROADWAY/TRAFFIC SIGN
 - POWER POLE
 - GUY WIRE
 - WATER METER
 - WATER VALVE
 - WARNING POST
 - FENCE
 - SWALE FLOWLINE
 - EDGE OF PAVEMENT
 - OVERHEAD ELECTRIC
 - UNDERGROUND ELECTRIC
 - UNDERGROUND FIBER OPTIC
 - UNDERGROUND TELEPHONE
 - UNDERGROUND GAS MAIN
 - WATER MAIN
 - SANITARY SEWER
 - PROPOSED STORM INLET
 - PROPOSED FLOWLINE

SCALE:
PLAN: 1"=20'
PROFILE: 1"=20' HORIZ.
1"=5' VERT.



ROADWAY PLAN AND PROFILE OBERNUEFEMANN ROAD IMPROVEMENTS
SECTION 03-00054-00-RP ST. CLAIR COUNTY, ILLINOIS

E:\12101 - O'Fallon\Obernuefemann Road\12101_RP.dwg, 2/20/2008, 12:39:45 PM, PLOTNED BY: M.A.L.