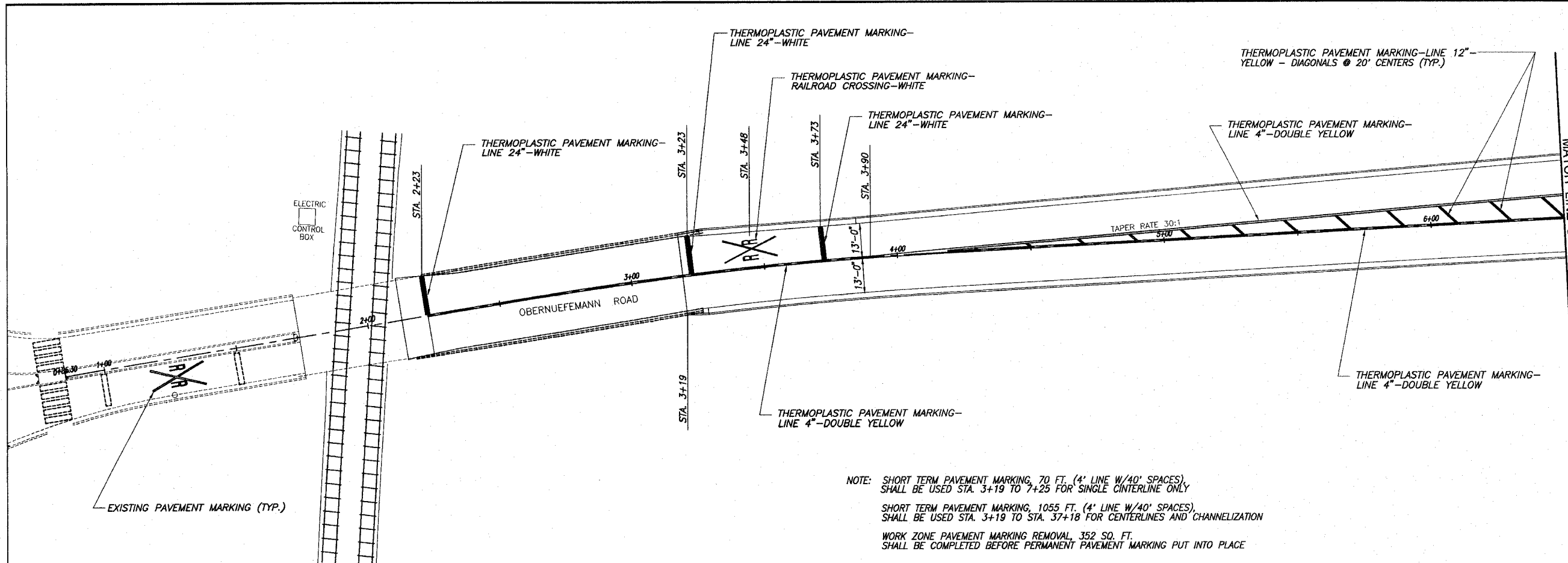


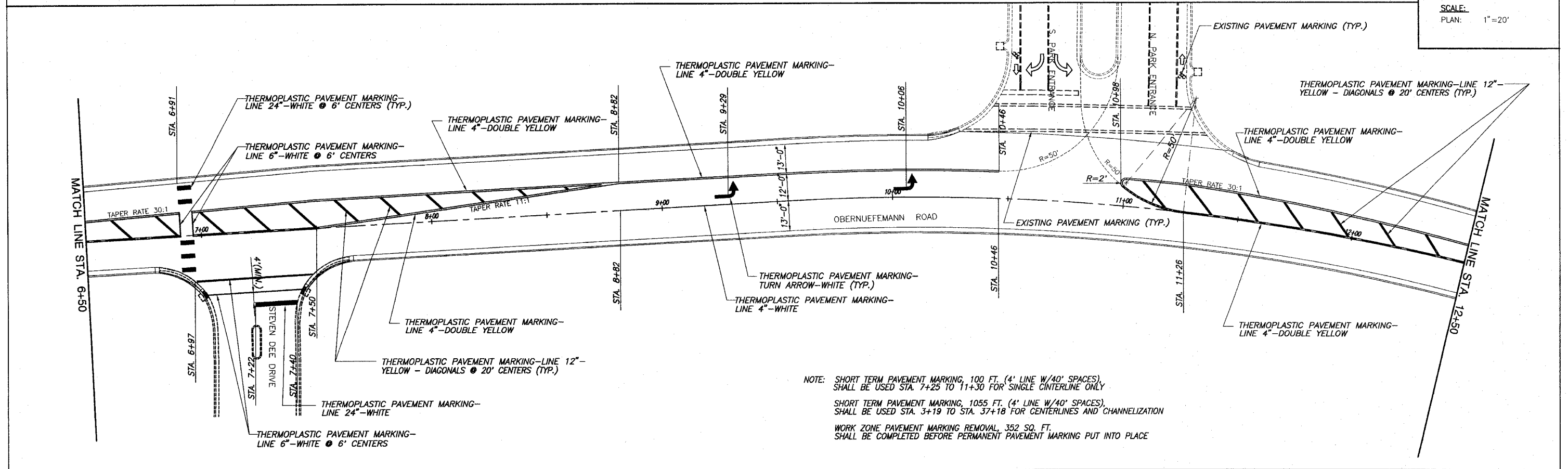
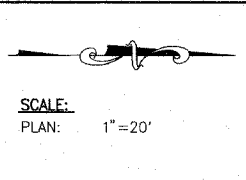
F.A.U. ROUTE	SECTION	COUNTY	TOTAL SHEETS	SHEET NUMBER
9170	03-00054-00-RP	ST. CLAIR	41	23
STA. 2+22.78		TO	STA. 37+18.35	
FEDERAL AID PROJECT			CONTRACT 97335	



NOTE: SHORT TERM PAVEMENT MARKING, 70 FT. (4' LINE W/40' SPACES), SHALL BE USED STA. 3+19 TO 7+25 FOR SINGLE CENTERLINE ONLY

SHORT TERM PAVEMENT MARKING, 1055 FT. (4' LINE W/40' SPACES), SHALL BE USED STA. 3+19 TO STA. 37+18 FOR CENTERLINES AND CHANNELIZATION

WORK ZONE PAVEMENT MARKING REMOVAL, 352 SQ. FT. SHALL BE COMPLETED BEFORE PERMANENT PAVEMENT MARKING PUT INTO PLACE



NOTE: SHORT TERM PAVEMENT MARKING, 100 FT. (4' LINE W/40' SPACES), SHALL BE USED STA. 7+25 TO 11+30 FOR SINGLE CENTERLINE ONLY

SHORT TERM PAVEMENT MARKING, 1055 FT. (4' LINE W/40' SPACES), SHALL BE USED STA. 3+19 TO STA. 37+18 FOR CENTERLINES AND CHANNELIZATION

WORK ZONE PAVEMENT MARKING REMOVAL, 352 SQ. FT. SHALL BE COMPLETED BEFORE PERMANENT PAVEMENT MARKING PUT INTO PLACE

PAVEMENT MARKING PLAN OBERNEUEFEMANN ROAD IMPROVEMENTS
SECTION 03-00054-00-RP ST. CLAIR COUNTY, ILLINOIS