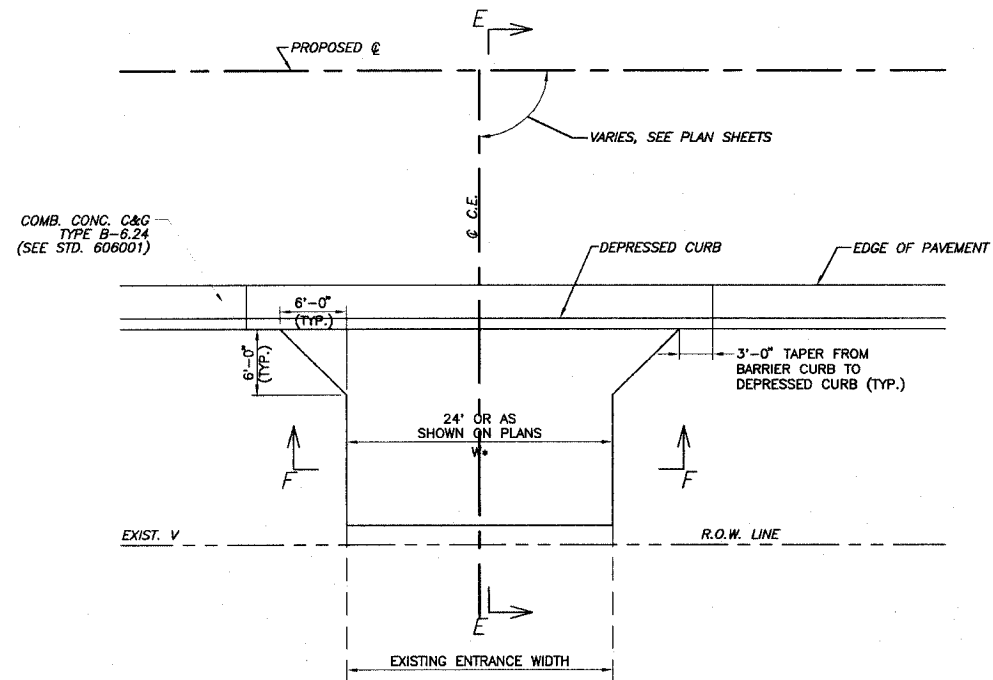


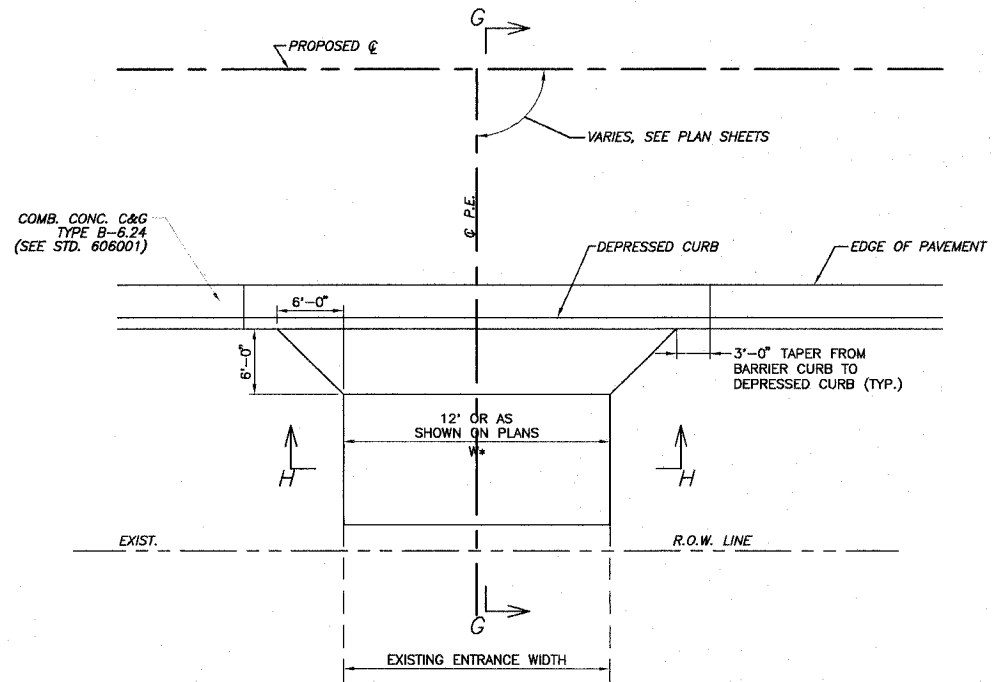
F.A.U. ROUTE	SECTION	COUNTY	TOTAL SHEETS	SHEET NUMBER
9170	03-00054-00-RP	ST. CLAIR	41	28
STA. 2+22.78		TO	STA. 37+18.35	
FEDERAL AID PROJECT			CONTRACT 97335	



**C.E. DETAIL "C"**

TYPICAL COMMERCIAL ENTRANCE  
N.T.S.

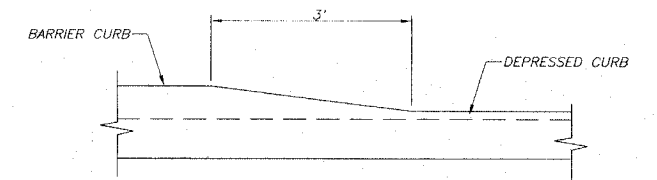
STA. 31+00 TO STA. 37+50  
&  
STA. 60+00 TO STA. 61+50



**P.E. DETAIL "D"**

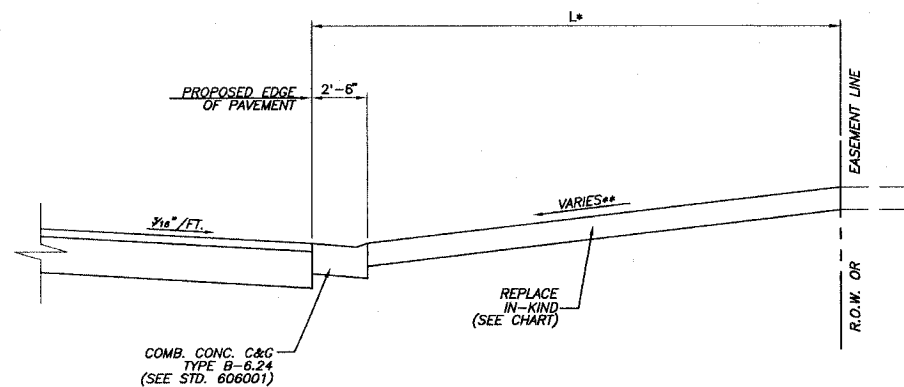
TYPICAL PRIVATE ENTRANCE  
N.T.S.

STA. 31+00 TO STA. 37+50  
&  
STA. 60+00 TO STA. 61+50



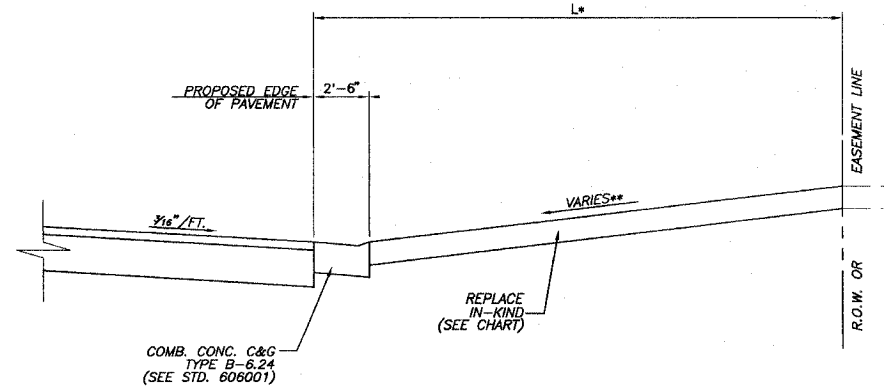
**DETAIL OF CURB HEIGHT TRANSITION**

N.T.S.



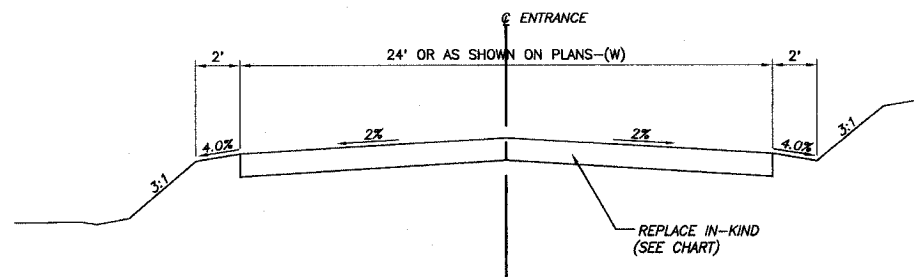
**SECTION "E-E"**

\* SEE ENTRANCE SCHEDULE FOR DISTANCES  
\*\* SEE CROSS SECTIONS FOR SLOPES

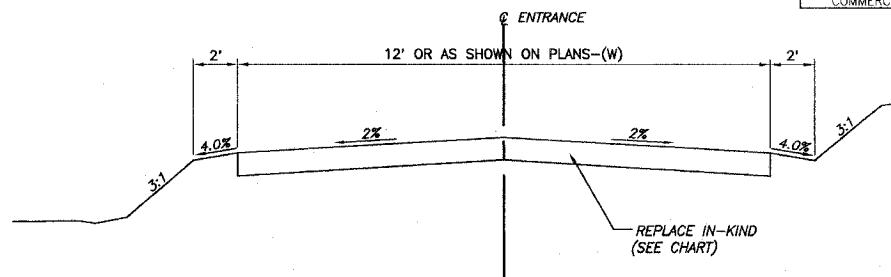


**SECTION "G-G"**

\* SEE ENTRANCE SCHEDULE FOR DISTANCES  
\*\* SEE CROSS SECTIONS FOR SLOPES



**SECTION "F-F"**



**SECTION "H-H"**

TYPE OF ENTRANCE	EXISTING MATERIAL	NEW ENTRANCE MATERIAL (BEYOND RADIUS RETURNS OR TAPERS)			
		PCC DRIVEWAY PAVEMENT	INCIDENTAL HOT-MIX ASPHALT SURFACING	AGGREGATE BASE COURSE TYPE B	AGGREGATE SURFACE COURSE TYPE B
PRIVATE &	CONCRETE	X			
	BITUMINOUS		X	X	
COMMERCIAL	AGGREGATE				X