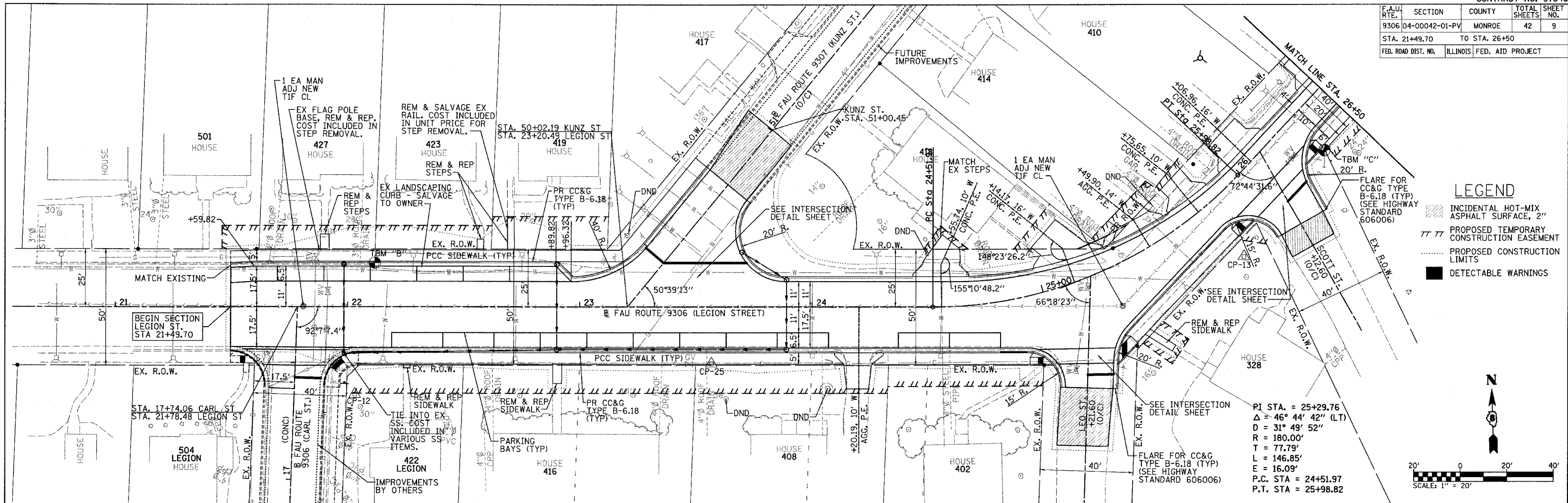


F.A.U. RTE.	SECTION	COUNTY	TOTAL SHEETS	SHEET NO.
9306	04-00042-01-PV	MONROE	42	9
STA. 21+49.70		TO STA. 26+50		
FED. ROAD DIST. NO.		ILLINOIS FED. AID PROJECT		

DATE	BY
DATE	BY
DATE	BY

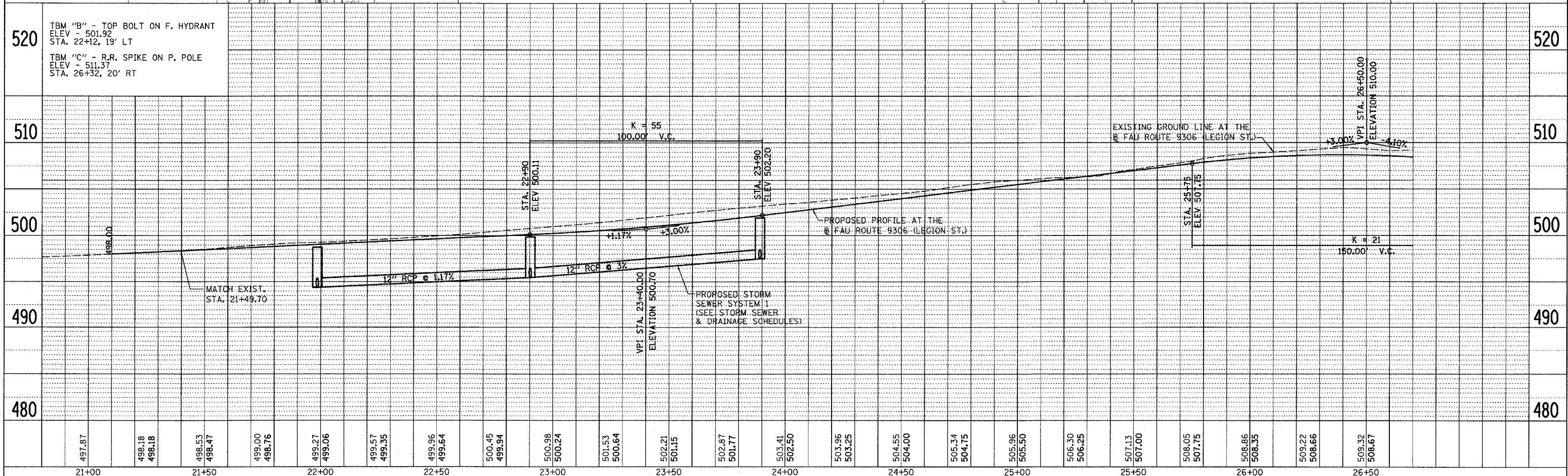
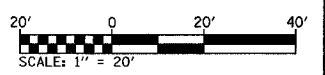
DATE	BY
DATE	BY
DATE	BY

PLOT DATE = 6/15/2008
 FILE NAME = #FILE#
 PLOT SCALE = #SCALE#
 USER NAME = #USER#



LEGEND

- INCIDENTAL HOT-MIX ASPHALT SURFACE, 2"
- PROPOSED TEMPORARY CONSTRUCTION EASEMENT
- PROPOSED CONSTRUCTION LIMITS
- DETECTABLE WARNINGS



LEGION ST. STA. 21+49.70 TO STA. 26+50