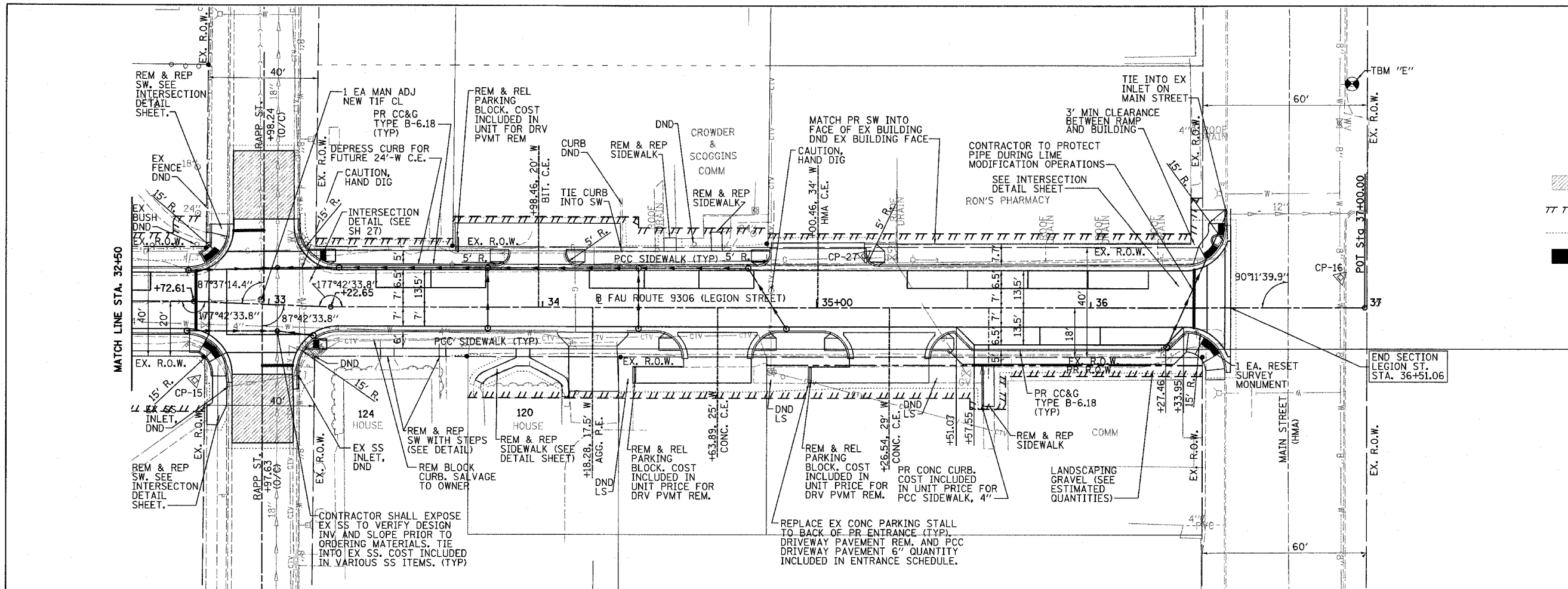


F.A.U. RTE.	SECTION	COUNTY	TOTAL SHEETS	SHEET NO.
9306	04-00042-01-PV	MONROE	42	11
STA. 32+50		TO STA. 36+99.96		
FED. ROAD DIST. NO.		ILLINOIS FED. AID PROJECT		

PLAN	SURVEYED	DATE
	BY	
	PLOTTED	
	FILED	
	NO. OF WAY CHECKED	
	NO. OF FILE NAME	

PROFILE	SURVEYED	DATE
	BY	
	CHECKED	
	NO. NOTED	
	STRUCTURE NOTATIONS CIPD	

PLOT DATE = 8/2/2008
 FILE NAME = #FILE#
 PLOT SCALE = #SCALE#
 USER NAME = #USER#



- LEGEND**
- INCIDENTAL HOT-MIX ASPHALT SURFACE, 2"
 - PROPOSED TEMPORARY CONSTRUCTION EASEMENT
 - PROPOSED CONSTRUCTION LIMITS
 - DETECTABLE WARNINGS

