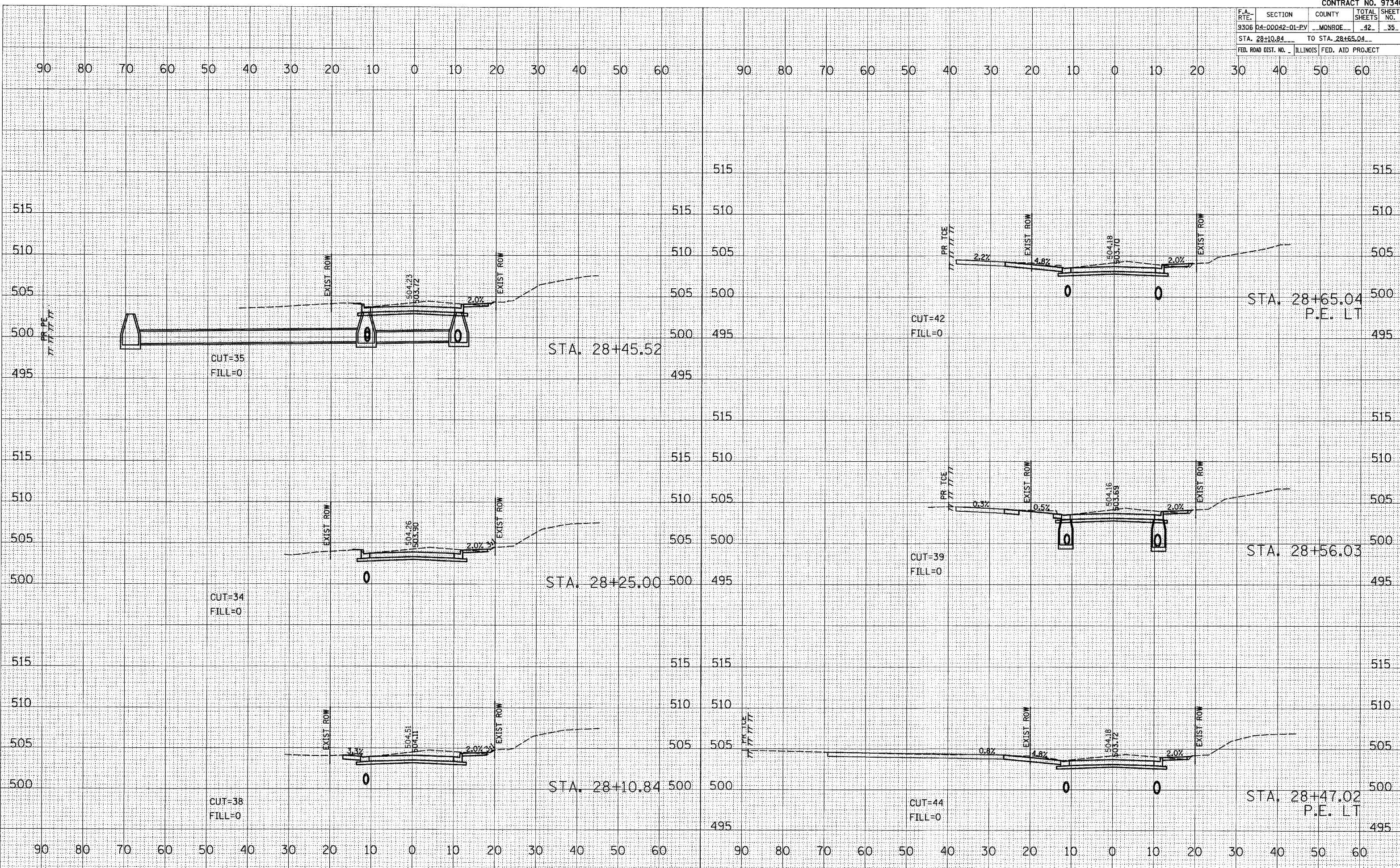


F.A. RTE.	SECTION	COUNTY	TOTAL SHEETS	SHEET NO.
9306	04-00042-01-PV	MONROE	42	35
STA. 28+10.84		TO STA. 28+65.04		
FED. ROAD DIST. NO.		ILLINOIS FED. AID PROJECT		

DATE	
BY	
FINISHED SURVEY	
PLOTTED	
NOTE BOOK	
AREAS CHECKED	

DATE	
BY	
ORIGINAL SURVEY	
TEMPLATE	
NOTE BOOK	
AREAS CHECKED	

PLOT DATE = 6/5/2008  
 FILE NAME = FILEL\*  
 PLOT SCALE = 1"=40'  
 REFERENCE = REF\*



CROSS SECTIONS - LEGION ST.