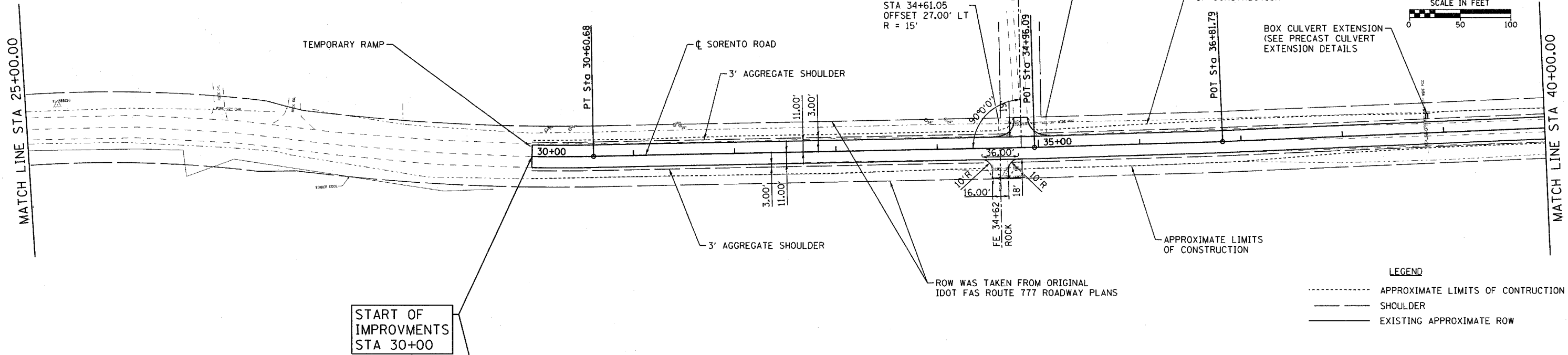


DATE	
BY	
REVISIONS	
NO.	
PLAN	
NO.	
NOTE BOOK	
NO.	
ALTIMETER CHECKED	
NO.	
STATION FILE NAME	

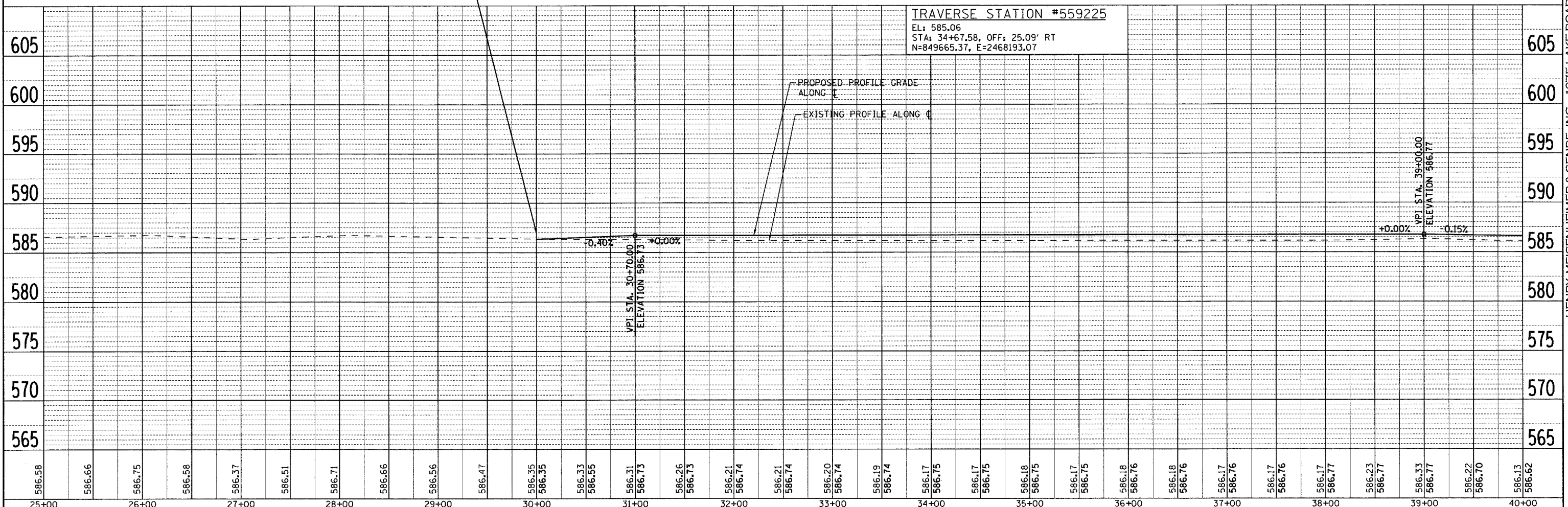
DATE	
BY	
REVISIONS	
NO.	
PROFILE	
NO.	
NOTE BOOK	
NO.	
GRADES CHECKED	
NO.	
BLM NOTED	
NO.	
STRUCTURE NOTATIONS	
NO.	



START OF IMPROVEMENTS STA 30+00

LEGEND

- APPROXIMATE LIMITS OF CONSTRUCTION
- SHOULDER
- EXISTING APPROXIMATE ROW



TRAVERSE STATION #559225
 EL: 585.06
 STA: 34+67.58, OFF: 25.09' RT
 N=849665.37, E=2468193.07

FILE NAME - H:\5592\PP_SR_5592_02.dgn	USER NAME - .USERDESCR.	DESIGNED - DLD	REVISED -	STATE OF ILLINOIS DEPARTMENT OF TRANSPORTATION	PLAN & PROFILE - SORENTO ROAD		F.A.S. RTE. 777	SECTION 05-00080-00-RS	COUNTY BOND	TOTAL SHEETS 90	SHEET NO. 16	
PLOT SCALE = 5/8" = 1' / IN.	DATE = 1-17-08	DRAWN - KOJ	REVISED -		SCALE: 50	SHEET NO. OF SHEETS	STA. 25+00 TO STA. 40+00	CONTRACT NO. 97341		FED. ROAD DIST. NO. 8 ILLINOIS FED. AID PROJECT		
PLOT DATE = 3/21/2008	DATE = 1-17-08	CHECKED -	REVISED -									
		DATE = 1-17-08	REVISED -									

H.M.G. NO. 5592 HENRY, MEISENHEIMER & GENDE, INC., 1075 LAKE ROAD, PO BOX 70, CARLYLE, IL 62231 PHONE (618) 594-3711 WWW.HMGENGINEERS.COM