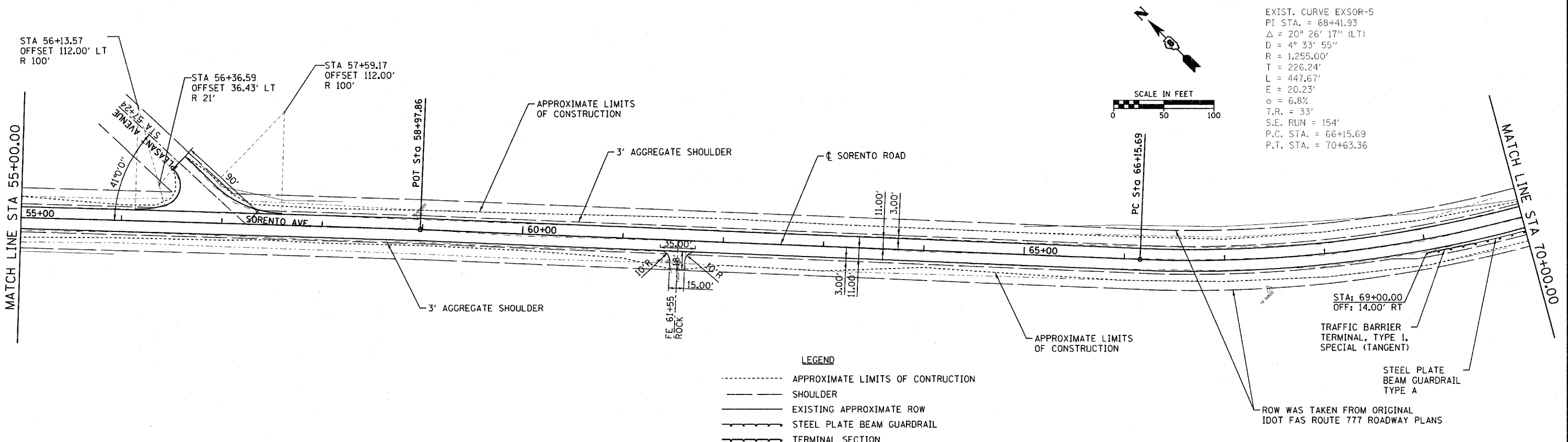


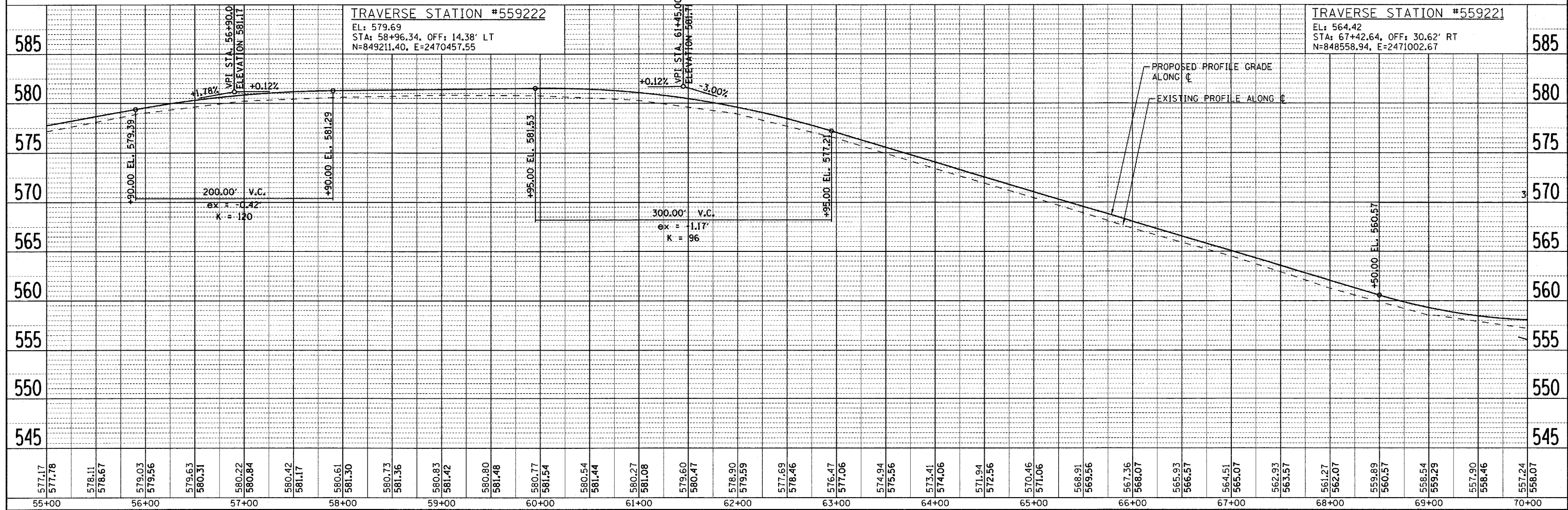
PLAN	SURVEYED	BY	DATE
	DESIGNED		
	CHECKED		
	IN CHARGE		
	FILED		
	NO. OF WAY CHECKED		
	CADD FILE NAME		
	NO.		

PROFILE	SURVEYED	BY	DATE
	DESIGNED		
	CHECKED		
	IN CHARGE		
	FILED		
	NO. OF WAY CHECKED		
	CADD FILE NAME		
	NO.		



EXIST. CURVE EXSOR-5
 PI STA. = 68+41.93
 $\Delta = 20^\circ 26' 17''$ (LT)
 $D = 4^\circ 33' 55''$
 $R = 1,255.00'$
 $T = 226.24'$
 $L = 447.67'$
 $E = 20.23'$
 $e = 6.8\%$
 $T.R. = 33'$
 $S.E. RUN = 154'$
 $P.C. STA. = 66+15.69$
 $P.T. STA. = 70+63.36$

- LEGEND**
- APPROXIMATE LIMITS OF CONSTRUCTION
 - SHOULDER
 - EXISTING APPROXIMATE ROW
 - STEEL PLATE BEAM GUARDRAIL
 - TERMINAL SECTION



FILE NAME = H:\5592\PP_SR_5592_04.dgn	USER NAME = _USERDESCR_	DESIGNED - DLD	REVISED -	STATE OF ILLINOIS DEPARTMENT OF TRANSPORTATION	PLAN & PROFILE - SORENTO ROAD		F.A.S. RTE. 777	SECTION 05-00080-00-RS	COUNTY BOND	TOTAL SHEETS 90	SHEET NO. 18	
PLOT SCALE = 50.0000' / IN.	CHECKED - KOJ	REVISED -	REVISED -		SCALE: 50	SHEET NO. OF SHEETS	STA. 55+00 TO STA. 70+00	CONTRACT NO. 97341		FED. ROAD DIST. NO. 8 (ILLINOIS) FED. AID PROJECT		
PLOT DATE = 3/21/2008	DATE - 1-17-08	REVISED -	REVISED -									

HENRY, MEISENHEIMER & GENDE, INC., 1075 LAKE ROAD, PO BOX 70, CARLYLE, IL 62231 PHONE (618) 594-3711 WWW.HMGENGINEERS.COM