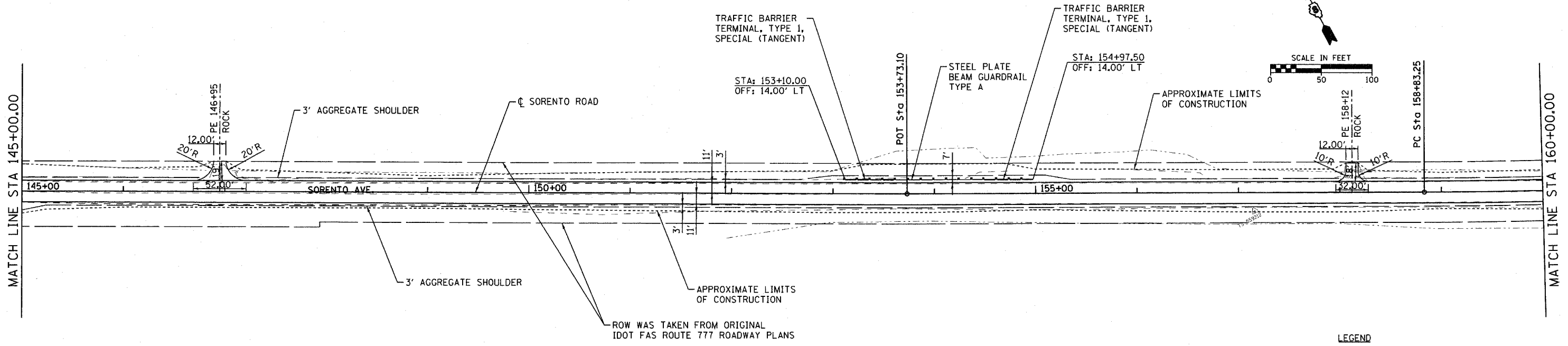


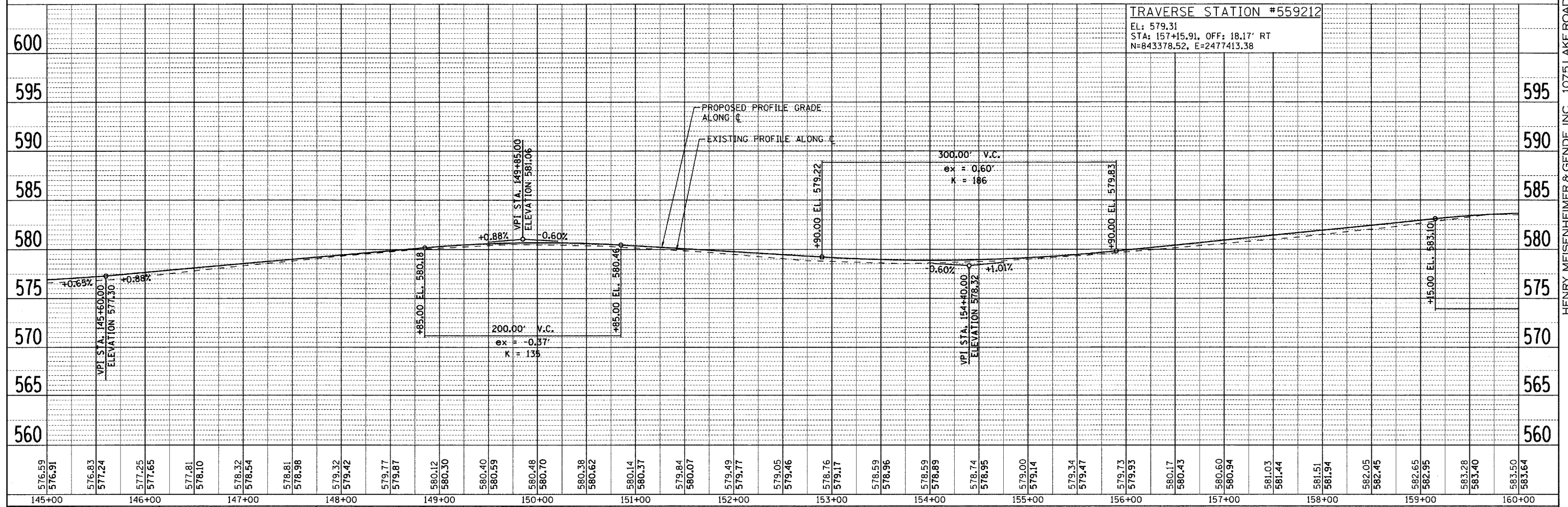
PLAN	SURVEYED	DATE
	PLOTTED	
	CHECKED	
	BY	
	NO. OF WAY CHECKED	
	NOTE BOOK	
	DATE	
	FILE NAME	

PROFILE	SURVEYED	DATE
	PLOTTED	
	CHECKED	
	BY	
	NO. OF WAY CHECKED	
	NOTE BOOK	
	DATE	
	FILE NAME	



LEGEND

- APPROXIMATE LIMITS OF CONSTRUCTION
- SHOULDER
- EXISTING APPROXIMATE ROW
- STEEL PLATE BEAM GUARDRAIL
- TERMINAL SECTION



TRAVERSE STATION #559212
 EL: 579.31
 STA: 157+15.91, OFF: 18.17' RT
 N=843378.52, E=2477413.38

FILE NAME = H:\5592\PP_SR_5592_18.dgn	USER NAME = _USERDESCR_	DESIGNED - DLD	REVISED -	STATE OF ILLINOIS DEPARTMENT OF TRANSPORTATION	PLAN & PROFILE - SORENTO ROAD		F.A.S. RTE. 777	SECTION 05-00080-00-RS	COUNTY	TOTAL SHEETS 90	SHEET NO. 24
PLOT SCALE = 50.0000' / IN.	CHECKED - KOJ	DRAWN -	REVISED -		SCALE: 50	SHEET NO. OF SHEETS	STA. 145+00 TO STA. 160+00	BOND	CONTRACT NO. 97341	FED. ROAD DIST. NO. 8	ILLINOIS FED. AID PROJECT
PLOT DATE = 3/21/2008	DATE - 1-17-08	REVISOR -	REVISED -								

HENRY, MEISENHEIMER & GENDE, INC., 1075 LAKE ROAD, PO BOX 70, CARLYLE, IL 62231 PHONE (618) 594-3711 WWW.HMENGINEERS.COM