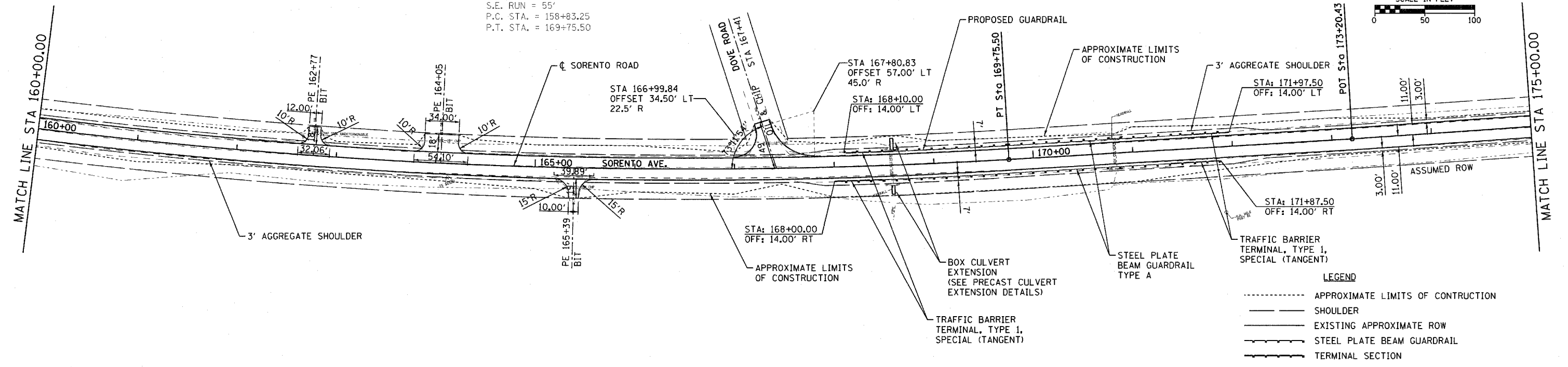
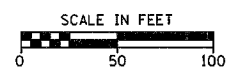


PLAN	SURVEYED	DATE
	PLOTTED	
	CHECKED	
	BY	
	NO.	
	DATE	
	FILE NAME	

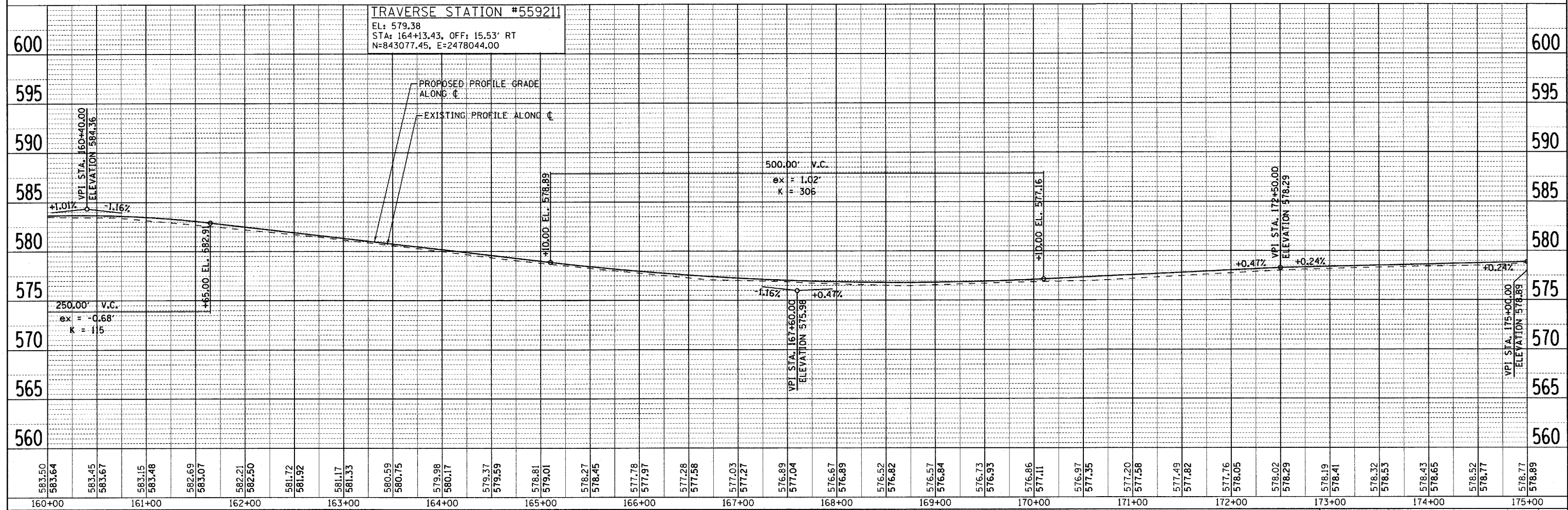
PROFILE	SURVEYED	DATE
	PLOTTED	
	CHECKED	
	BY	
	NO.	
	DATE	
	FILE NAME	

EXIST. CURVE EXSOR-10  
 PI STA. = 164+31.36  
 $\Delta = 11^\circ 55' 13''$  (LT)  
 $D = 1^\circ 05' 29''$   
 $R = 5,250.00'$   
 $T = 548.10'$   
 $L = 1,092.25'$   
 $E = 28.53'$   
 $e = 2.33'$   
 $T.R. = 33'$   
 $S.E. RUN = 55'$   
 $P.C. STA. = 158+83.25$   
 $P.T. STA. = 169+75.50$



**LEGEND**

- APPROXIMATE LIMITS OF CONSTRUCTION
- SHOULDER
- EXISTING APPROXIMATE ROW
- STEEL PLATE BEAM GUARDRAIL
- TERMINAL SECTION



FILE NAME = H:\5592\PP_SR_5592_11.dgn	USER NAME = _USERDESCR_	DESIGNED - DLD	REVISED -	<b>STATE OF ILLINOIS DEPARTMENT OF TRANSPORTATION</b>	<b>PLAN &amp; PROFILE - SORENTO ROAD</b>		F.A.S. RTE. 777	SECTION 05-0080-00-RS	COUNTY	TOTAL SHEETS 90	SHEET NO. 25
PLOT SCALE = 50.0000' / IN.	CHECKED -	DESIGNED - KOJ	REVISED -		SCALE: 50	SHEET NO. OF SHEETS	STA. 160+00 TO STA. 175+00	BOND	CONTRACT NO. 97341	FED. ROAD DIST. NO. 8 ILLINOIS FED. AID PROJECT	
PLOT DATE = 3/21/2008	DATE - 1-17-08	CHECKED -	REVISED -								
		DATE - 1-17-08	REVISED -								

HENRY, MEISENHEIMER & GENDE, INC., 1075 LAKE ROAD, PO BOX 70, CARLYLE, IL 62231 PHONE (618) 594-3711 WWW.HMENGINEERS.COM