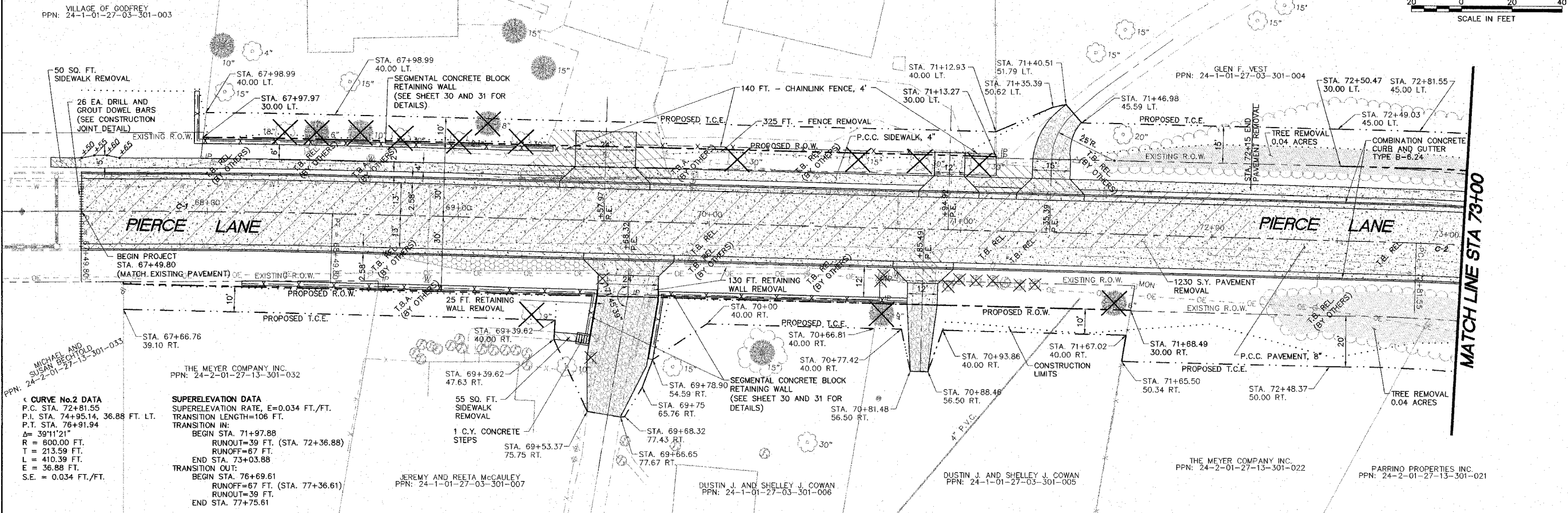
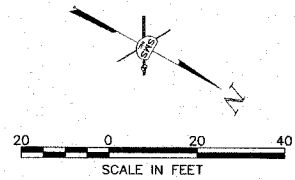
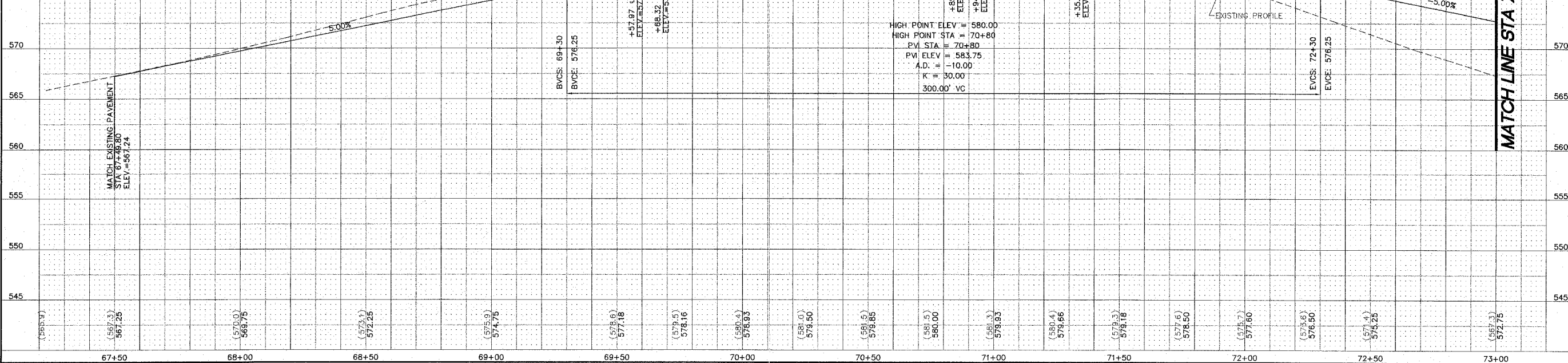
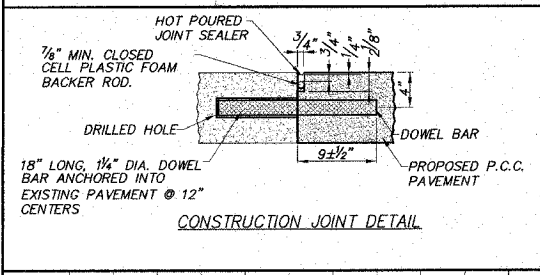


**CURVE No.1 DATA**  
 P.C. STA. 67+49.80  
 P.I. STA. 67+99.80, 0.33 FT. LT.  
 P.T. STA. 68+49.80  
 Δ = 01°30'12"  
 R = 3,811.43 FT.  
 T = 50.00 FT.  
 L = 100.00 FT.  
 E = 0.33 FT.  
 NORMAL CROWN



**CURVE No.2 DATA**  
 P.C. STA. 72+81.55  
 P.I. STA. 74+95.14, 36.88 FT. LT.  
 P.T. STA. 76+91.94  
 Δ = 39°11'21"  
 R = 600.00 FT.  
 T = 213.59 FT.  
 L = 410.39 FT.  
 E = 36.88 FT.  
 S.E. = 0.034 FT./FT.

**SUPERELEVATION DATA**  
 SUPERELEVATION RATE, E=0.034 FT./FT.  
 TRANSITION LENGTH=106 FT.  
 TRANSITION IN:  
 BEGIN STA. 71+97.88  
 RUNOUT=39 FT. (STA. 72+36.88)  
 RUNOFF=67 FT.  
 END STA. 73+03.88  
 TRANSITION OUT:  
 BEGIN STA. 76+69.61  
 RUNOFF=67 FT. (STA. 77+36.61)  
 RUNOUT=39 FT.  
 END STA. 77+75.61



REVISIONS


**SMS** Sheppard, Morgan & Schwaab, Inc.  
 CONSULTING ENGINEERS AND LAND SURVEYORS  
**ENGINEERS**

215 Main Street, P.O. Box E, Alton, IL 62002, 618432-9795, Email: sms@smssheppard.com  
 17 General Industrial Drive, Granite City, IL 62040, 618477-9700, Email: mail@smssheppard.com

**PIERCE LANE IMP. (PHASE 3 AND 4)-GODFREY, ILLINOIS**  
**FAU ROUTE 8985**  
**05-00001-03-PV (PHASE 3) / 06-00001-04-BR (PHASE 4)**  
**PLAN AND PROFILE - PAVING PLAN**

DWG. NO. PRC PH3 ROAD PP.DWG  
 REF. BK. PG.  
 JOB NO. 436613  
 DSN. BY: SJW/DDT  
 DWN. BY: BCS  
 CHK. BY: SJW  
 DATE: FEBRUARY, 2008  
 SCALE: HORIZ. 1"=20'  
 VERT. 1"=5'

SHEET 5 OF 61